



## LC Duplex Single-Boot Connector

### 106025 LC Duplex Single-Boot Connector

#### *Reduce cable congestion using a LC Duplex connector with only a single cable*

Development Background: Molex offers many additional features for fiber optic connectors to provide functionality for OEM's and other customers. By combining the LC duplex interface with a cabled version of the LC loopback connector, we are able to offer a rugged, yet compact connector that is compatible with existing LC adapters and transceivers. The LC connector effectively reduces the required cable diameter, allowing neat and less congested fiber routing within the system.

The LC Duplex Single-Boot connector offers the benefits of a duplex connector with the fiber management of

a simplex style connector. Using a cabled version of the Molex LC loopback style housing, this LC connector provides a robust duplex interface with a two fiber single jacketed cable. The connector is available for either singlemode or multimode fiber types and can be field or factory terminated.

Additionally, the connector is compatible with straight, 90° angled and mini boots, providing cable routing options suitable for most applications.

For additional product information, please visit [www.molex.com/link/lcingleboot.html](http://www.molex.com/link/lcingleboot.html).

#### *Features and Benefits*

- Single boot using simplex style cable with two 900 μm buffered fibers provide duplex connectivity while optimizing cable routing space
- Variety of strain relief boots including straight, 90° angled and mini boots offer flexibility for cable routing
- Small housing footprint allows connectors to be ganged or stacked in belly-to-belly cage applications
- Multimode or singlemode styles for factory or field termination can be used in most standard applications with common fiber types
- RoHS Compliant meets EU environmental requirements for electronic equipment and accessories.

## SPECIFICATIONS

### **Reference Information**

Packaging: individually bagged

Mates With: 106059, 106125, 106126, 106127, and 106128 series LC adapters

Designed In: Inches

### **Mechanical**

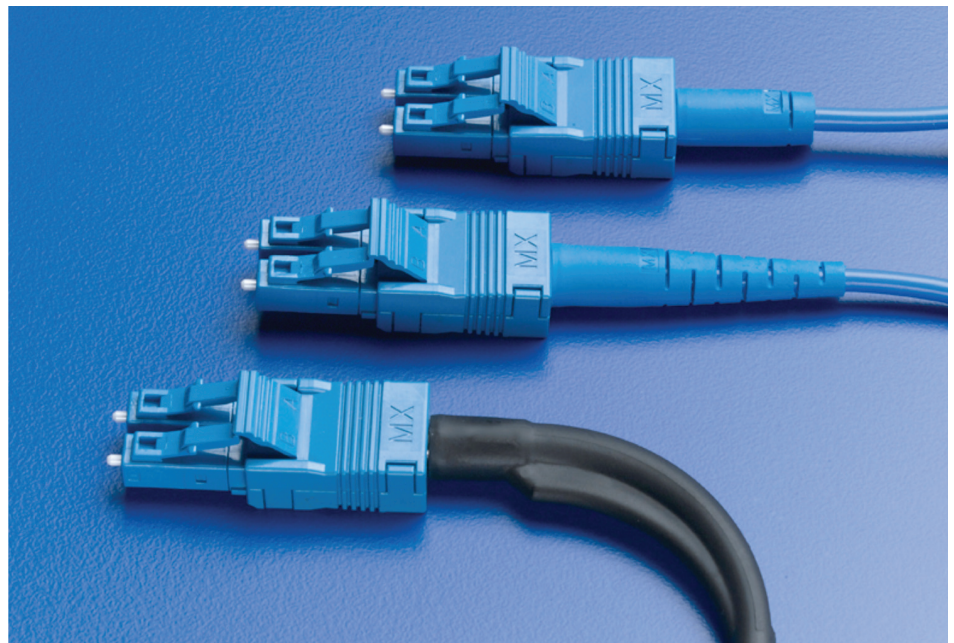
Mating Durability: IL<0.2dB change over 200 cycles

### **Physical**

Housing: UL 94V-0 rated polymer

Ferrule: Zirconia Ceramic

Operating Temperature: -40 to +85°C



LC Duplex Single-Boot Connectors with Mini boot (top), Straight boot (middle), and 90° boot (bottom) options

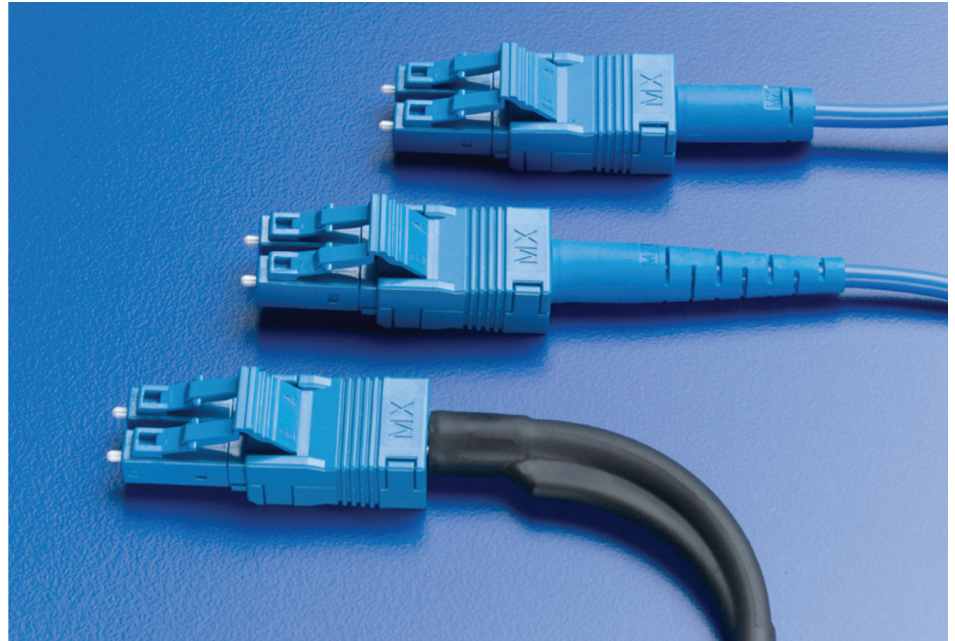
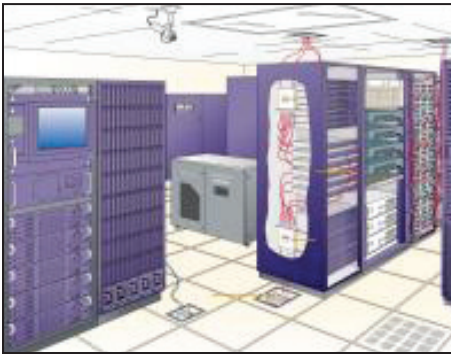
## APPLICATIONS



## LC Duplex Single-Boot Connector

### 106025 LC Duplex Single-Boot Connector

- Telecommunication
  - Cross Connects
  - Routers
  - SFP and SFP+
- Storage
  - Servers
  - Switches
- Premise
  - Computer connections
  - Optical DVI



## ORDERING INFORMATION

### LC Single Boot Duplex Connector (for field termination)

Order No.	Ferrule Diameter	Boot	Housing Color
106025-2320	Singlemode 125.5µm	3.3mm Straight	Blue
106025-2360	Multimode 127µm	3.3mm Straight	Beige
106025-2370	Singlemode 125.5µm	3mm 90° Angled	Blue
106025-2380	Multimode 127µm	3mm 90° Angled	Beige
106025-2330	Singlemode 125.5µm	3mm Mini**	Blue
106025-2340	Multimode 127µm	3mm Mini**	Beige

### Cable Assembly

Cable assemblies are custom designed to meet customers requirements. Please contact Molex Fiber Optics to request a customized cable assembly using the LC Duplex Single-Boot connector.

\*\* Molex Mini style straight boots are to be used in areas where space is limited and bending stress will not be seen. This boot does not provide bend relief and is recommended to be used with bend insensitive fibers for best results.

[www.molex.com/link/lcsingleboot.html](http://www.molex.com/link/lcsingleboot.html)

**Americas Headquarters**  
Lisle, Illinois 60532 U.S.A.  
1-800-78MOLEX  
amerinfo@molex.com

**Asia Pacific North Headquarters**  
Yamato, Kanagawa, Japan  
81-46-265-2325  
apninfo@molex.com

**Asia Pacific South Headquarters**  
Jurong, Singapore  
65-6268-6868  
apsinfo@molex.com

**European Headquarters**  
Munich, Germany  
49-89-413092-0  
eurinfo@molex.com

**Corporate Headquarters**  
2222 Wellington Ct.  
Lisle, IL 60532 U.S.A.  
P: 630-969-4550 F: 630-969-1352