



15 dB Fixed Attenuator, 2.92mm Male To 2.92mm Female
Stainless Steel Body Rated To 1 Watt Up To 40 GHz

PE7088-15

Mechanical Specifications

Temperature Operating Range (deg C) -55 to +125
Body Material and Plating Stainless Steel, Passivated

Connector 1

Type 2.92mm
Gender Male
Body Material and Plating Stainless Steel, Passivated
Inner Conductor Material and Plating BeCu, Gold
Outer Conductor Material and Plating Stainless Steel, Passivated
Coupling Nut Material and Plating Stainless Steel, Passivated

Connector 2

Type 2.92mm
Gender Female
Body Material and Plating Stainless Steel, Passivated
Inner Conductor Material and Plating BeCu, Gold
Outer Conductor Material and Plating Stainless Steel, Passivated
Coupling Nut Material and Plating Stainless Steel, Passivated

Compliance Certifications (visit www.Pasternack.com for current document)

RoHS Compliant Yes, by exemption

Other Data

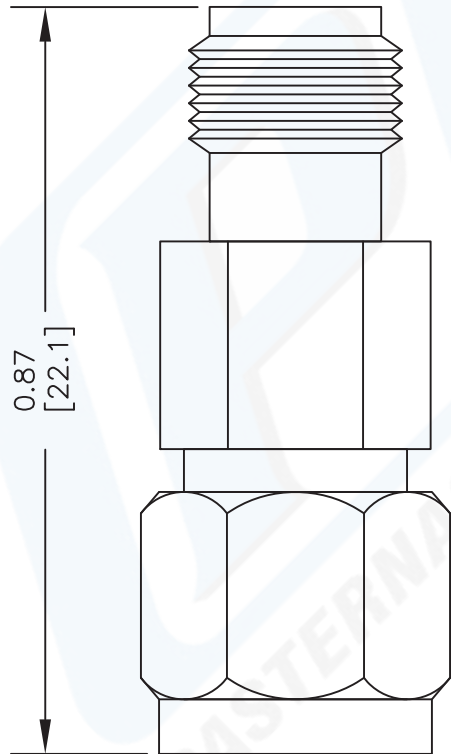
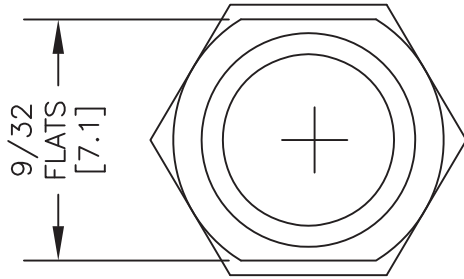
URL: <http://www.pasternack.com/15db-fixed-2.92mm-male-2.92mm-female-1-watt-attenuator-pe7088-15-p.aspx>

15 dB Fixed Attenuator, 2.92mm Male To 2.92mm Female Stainless Steel Body Rated To 1 Watt Up To 40 GHz from Pasternack Enterprises has same day shipment for domestic and International orders. Our RF, microwave and fiber optic products maintain a 99% availability and are part of the broadest selection in the industry.

Version C - Revision - © 2011 Pasternack Enterprises All Rights Reserved.

PE7088-15 CAD Drawing

15 dB Fixed Attenuator, 2.92mm Male To 2.92mm Female Stainless Steel Body Rated To 1 Watt Up To 40 GHz



2.92mm
FEMALE

2.92mm
MALE

NOTES:
 1. UNLESS OTHERWISE SPECIFIED ALL DIMENSIONS ARE NOMINAL.
 2. ALL SPECIFICATIONS ARE SUBJECT TO CHANGE WITHOUT NOTICE AT ANY TIME.
 3. DIMENSIONS ARE IN INCHES [mm].

DWG TITLE

PE7088

REV. -

FSCM NO. 53919

CAD FILE 061512

SCALE N/A

SIZE A

2233

PASTERNAK ENTERPRISES, INC.

P.O. BOX 16759, IRVINE, CA 92623
 PHONE (949) 261-1920 FAX (949) 261-7451

WEB ADDRESS: www.pasternack.com
 E-MAIL ADDRESS: sales@pasternack.com

COAXIAL & FIBER OPTICS

