
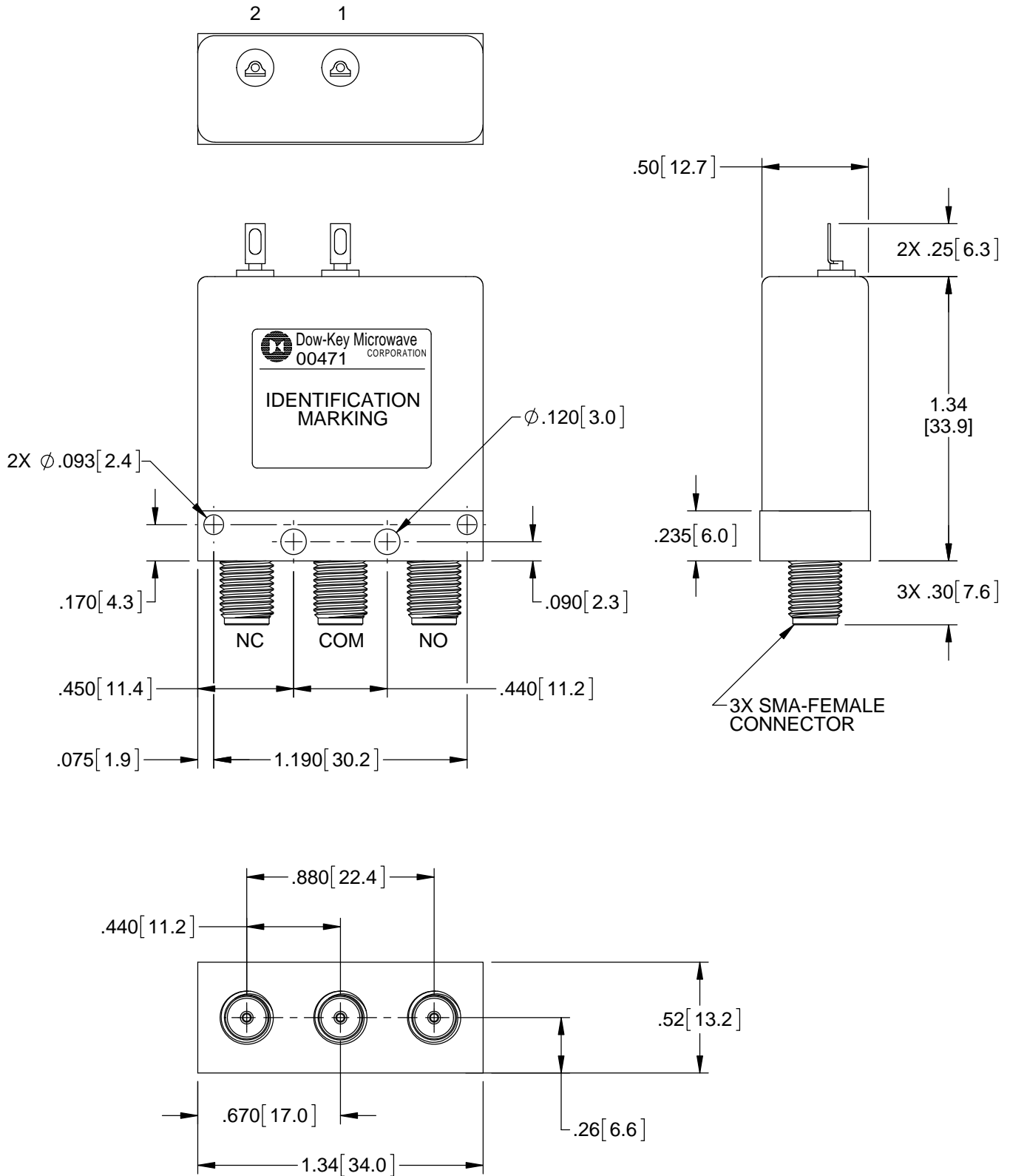


REVISIONS			
REV.	DESCRIPTION	DATE	APPROVED
J	REVISED PER ECO 8270	3/28/06	J.S.
K	REVISED AND REDRAWN PER ECO 11487	6/6/16	K.R.

Nominal Coil Voltage	Part Number
12 Vdc	401-2208
15 Vdc	401-2908
20 Vdc	401-2708
24 Vdc	401-2808
28 Vdc	401-2308

REVISIONS	K	K	K				 DowKey® Microwave CORPORATION <small>A DOVER TECHNOLOGIES COMPANY</small>	4822 McGrath Street Ventura, CA. 93003-5641 PH: (805) 650-0260 FAX: (805) 650-1734
SHEET NO.	1	2	3					
APPROVALS		DATE					SWITCH, SPDT, FAILSAFE SMA-FEMALE CONNECTORS	
DRAWN	SARA LEE		05/24/16					
ENGINEERING	G. NICKLAUS		6/2/2016					
QUALITY	S. LYNCH		6/2/2016					
MANUFACTURING	J. LEE		6/6/2016					
CODE IDENT. NO.				DWG. NO.				SHEET 1 OF 3
00471				401-2X08				
SCALE	NONE			FINAL ASSY: 401-2308				

OUTLINE DRAWING:



[] MILLIMETERS

UNLESS OTHERWISE SPECIFIED TOLERANCES ARE: .XXX ±.010 ANGLES: ±3° .XX ±.030	CODE IDENT. NO. 00471	DWG. NO. 401-2X08	REV. K
	SCALE NONE	FINAL ASSY: 401-2308	SHEET 2 OF 3

SPECIFICATION:

1.0 RF CHARACTERISTICS:

1.1 FREQUENCY (GHz)	DC - 1	1 - 4	4 - 8	8 - 12	12 - 18
1.2 VSWR (RATIO MAX)	1.10:1	1.15:1	1.20:1	1.30:1	1.35:1
1.3 INSERTION LOSS (dB MAX)	0.10	0.15	0.20	0.30	0.35
1.4 ISOLATION (dB MIN)	85	80	70	65	60
1.5 RF POWER (WATTS CW MAX) AT SEA LEVEL, +25°C, LOAD VSWR 1:1	200	125	90	75	60
1.6 IMPEDANCE (NOMINAL)	50 OHMS				

2.0 ACTUATION DATA:

2.1	NOMINAL VOLTAGE	OPERATING VOLTAGE	CURRENT (NOMINAL) @ NOMINAL VOLTAGE & 25°C
	12	11-14	185mA
	15	13-17	160mA
	20	17-23	140mA
	24	20-28	120mA
	28	24-32	90mA

2.2 SWITCHING TIME 15mS MAX
2.3 OPERATING MODE FAILSAFE

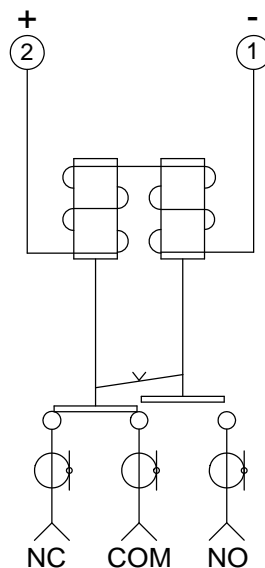
3.0 MECHANICAL:

3.1 CONTACT ARRANGEMENT SPDT
3.2 RF CONTACTS BREAK BEFORE MAKE
3.3 WEIGHT 1.2oz (34g) NOMINAL
3.4 DESIGN LIFE 1,000,000 CYCLES MINIMUM

4.0 ENVIRONMENTAL:

4.1 OPERATING TEMPERATURE -25°C TO +65°C
4.2 STORAGE TEMPERATURE -55°C TO +85°C
4.3 SEAL: EPOXY SEAL

SCHEMATIC:



SWITCH SHOWN IN THE DE-ENERGIZED POSITION

CODE IDENT. NO. 00471	DWG. NO. 401-2X08	REV. K
SCALE NONE	FINAL ASSY: 401-2308	SHEET 3 OF 3