

6

5

4

3

2

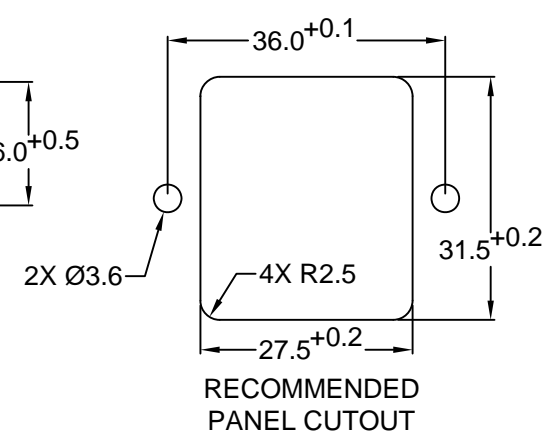
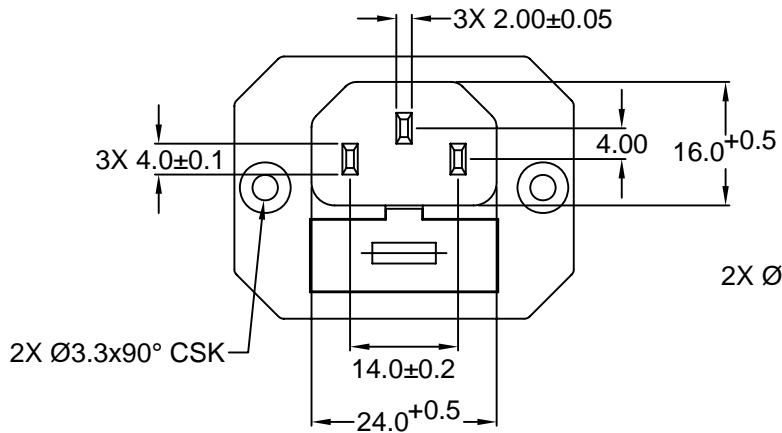
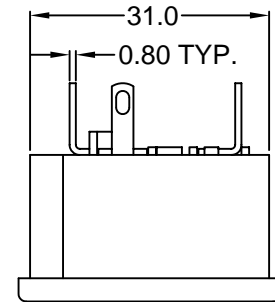
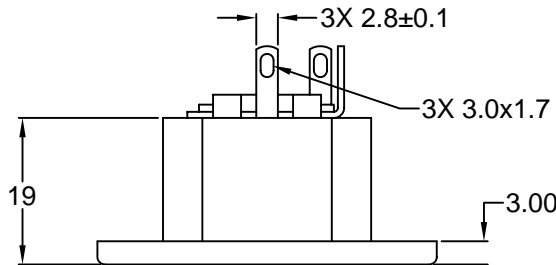
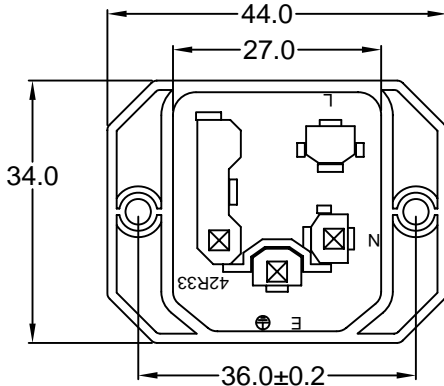
1

MATERIAL AND FINISH:

Insulator: Polycarbonate, UL-94V-0 rated
Contacts: Brass, Nickel plated

ELECTRICAL SPECIFICATIONS:

Current rating: 10 A
Voltage rating: 250 VAC
Insulation resistance: 100 Mohm min. at 500 VDC
Dielectric withstanding voltage: 2000 VAC for one minute



**RECOMMENDED
PANEL CUTOUT**

ORDERING CODE:

42R33-1 2
 1 2

1) COLOR

- 1 = BLACK
- 2 = GRAY

2) ELECTRICAL CIRCUIT CONFIGURATION

1 = 10A 250V 70°C
2+GROUND

2 = 10A 250V 120°C
2+GROUND

4 = 10A 250V 70°C
2 POLE

REV	DATE	CHANGE	CHNG	CHECK	APPR

**RoHS
COMPLIANT**

TOLERANCE UNLESS OTHERWISE SPECIFIED			
X	± 1		
X.X	± 0.4		
X.XX	± 0.20		
DRAWN BY	GQ	DATE:	09/12/01
CHECK BY	TD	DATE:	09/12/01
APPR BY	PB	DATE:	09/12/01

Power Dynamics, Inc.
Phone: 973 560-0019 Whippany, New Jersey Fax: 973 560-0076

PART: IEC 60320 SINGLE FUSE HOLDER APPL. IN-LET; SOLDER TERMINALS; SIDE FLANGE

42R33-1X2X SHEET 1 of 1

SIZE: A ALL DIMENSIONS FOR REFERENCE ONLY
SCALE: NTS DIMENSIONS ARE IN MILLIMETERS REV:

6

5

4

3

2

1