

**PLEASE CHECK WWW.MOLEX.COM FOR LATEST PART INFORMATION**

**Part Number:** [0015474222](#)  
**Status:** **Active**  
**Overview:** [cgrid\\_sl\\_products](#)  
**Description:** 2.54mm (.100") C-Grid SL™ Single Row, Female, Version D Receptacle, 22 Circuits

**Documents:**

[3D Model](#) [Product Specification PS-70430 \(PDF\)](#)  
[Drawing \(PDF\)](#) [RoHS Certificate of Compliance \(PDF\)](#)

**Agency Certification**

CSA LR19880  
 UL E29179

**General**

Product Family FFC/FPC Connectors  
 Series [70430](#)  
 Comments Stackable Back-to-Back  
 Overview [cgrid\\_sl\\_products](#)  
 Product Name SL™

**Physical**

Circuits (Loaded) 22  
 Color - Resin Black  
 Contact Position N/A  
 Durability (mating cycles max) 50  
 Entry Angle Vertical  
 Flammability 94V-0  
 Material - Metal Phosphor Bronze  
 Material - Plating Mating Gold  
 Material - Plating Termination Tin  
 Material - Resin Polyester Alloy  
 Number of Rows 1  
 Orientation Vertical  
 PCB Retention None  
 Packaging Type Tube  
 Pitch - Mating Interface (in) 0.100 In  
 Pitch - Mating Interface (mm) 2.54 mm  
 Plating min: Mating (µin) 15  
 Plating min: Mating (µm) 0.375  
 Plating min: Termination (µin) 75  
 Plating min: Termination (µm) 1.875  
 Polarized to PCB No  
 Stackable Yes  
 Temperature Range - Operating -40°C to +105°C  
 Termination Interface: Style IDT or Pierce  
 Wire/Cable Type FFC/FPC

**Electrical**

Current - Maximum per Contact 1A, 2A  
 Voltage - Maximum 250V

**Material Info**

Old Part Number 70430-0266

**Reference - Drawing Numbers**

Product Specification PS-70430  
 Sales Drawing SDA-70430-0246-0269



**EU RoHS**

**ELV and RoHS  
 Compliant**  
**REACH SVHC  
 Not Reviewed**  
**Halogen-Free  
 Status  
 Not Reviewed**

**China RoHS**



**Need more information on product  
 environmental compliance?**

Email [productcompliance@molex.com](mailto:productcompliance@molex.com)  
 For a multiple part number RoHS Certificate of  
 Compliance, [click here](#)

Please visit the [Contact Us](#) section for any  
 non-product compliance questions.

**Search Parts in this Series**

[70430Series](#)

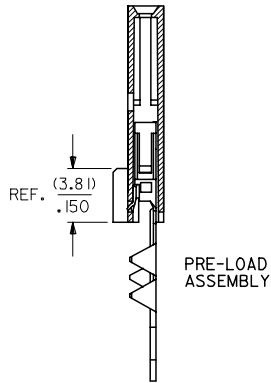
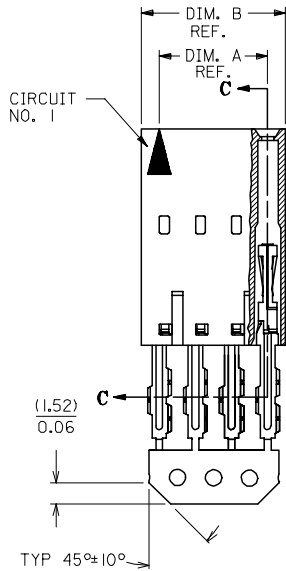
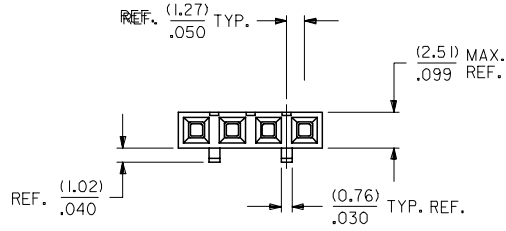
**Mates With**

[70004](#) Interim Clip, [70013](#) Interim Clip

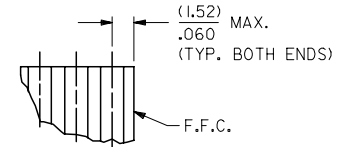
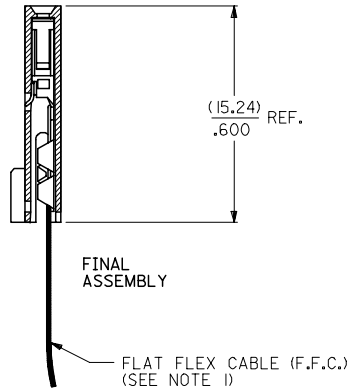
This document was generated on 05/18/2010

**PLEASE CHECK [WWW.MOLEX.COM](http://WWW.MOLEX.COM) FOR LATEST PART INFORMATION**

"D" - OPTION



SECTION C-C



DETAIL - 1  
(SEE NOTE 7)

HOUSING MATERIAL: GLASS FILLED POLYESTER, UL 94V-0.  
 TERMINAL MATERIAL: PHOSPHOR BRONZE.  
 PLATING: 15 GOLD - .000015 MINIMUM GOLD PLATE IN SELECT AREA,  
 .000075 MINIMUM TIN PLATE IN SELECT AREA,  
 .000050 MINIMUM NICKEL PLATE OVERALL.

| CONTACT PLATING | COLOR CODE |
|-----------------|------------|
| TIN             | NONE       |
| 15 GOLD         | YELLOW     |
| 30 GOLD         | RED        |

|  |  |  |  |                     |                     |                               |
|--|--|--|--|---------------------|---------------------|-------------------------------|
| ADD TOLERANCE<br>FC NO: UCP2007-2849<br>DRAWN: JORGAN 2007/05/18<br>CHKD: MS BARRA 2007/05/21<br>APPR: SMILLER 2007/05/21<br>REVISIONS | QUALITY SYMBOLS  | GENERAL TOLERANCES (UNLESS SPECIFIED)<br>mm INCH<br>4 PLACES ± --- ± ---<br>3 PLACES ± --- ± .010<br>2 PLACES ± 0.25 ± .015<br>1 PLACE ± 0.38 ± ---<br>ANGULAR ±1/2° | DIMENSION STYLE  | SCALE               | DESIGN UNITS        | THIRD ANGLE PROJECTION        |
|  | =0<br>∇=0  |  | MM/IN  | 4:1                 | INCH                | ☉ □<br>THIRD ANGLE PROJECTION |
|  | DRAWN BY DATE<br>RAS 1986/07/21<br>CHECKED BY DATE<br>MJM 1986/07/21<br>APPROVED BY DATE<br>WAZ 1986/07/21<br>MATERIAL NO.<br>DOCUMENT NO. |  | FILE<br>ASSEMBLY, CONNECTOR FFC<br>FEMALE SINGLE ROW<br>(2.54)/.100 GRID | MOLEX INCORPORATED  | SHEET NO.<br>1 OF 1 |                               |
|  | DRAFT WHERE APPLICABLE<br>MUST REMAIN<br>WITHIN DIMENSIONS   |  | SEE TABLE  | SDA-70430-0246-0269 | 1 OF 1              |                               |

- NOTES:**
- 1) PRE LOADED ASSEMBLY TO BE USED WITH (0.30)/.012 MAX. THICK FLAT FLEX CABLE WITH (1.57)/.062 WIDE COPPER CONDUCTORS ON (2.54)/.100 CENTERS OR, (0.13)/.005 - (0.28)/.011 THICK MYLAR WITH (1.02)/.040 - (1.65)/.065 WIDE SILVER INK CONDUCTORS ON (2.54)/.100 CENTERS.
  - 2) STANDARD PACKING PER PK70873-0001 SHALL BE USED.
  - 3) SEE CHART FOR CIRCUIT SIZES, 'A' AND 'B' DIMENSIONS.
  - 4) TWO (2) CIRCUIT ASSEMBLIES SUPPLIED AS GROUPED PAIRS.
  - 5) PART MATES WITH (0.64)/.025 SQ. PINS, (8.13)/.320 TO (5.08)/.200 LONG ON (2.54)/.100 CENTERS.
  - 6) REFER TO SDA-70430-\*\*\*\* (SHEET 3) FOR MINOR VARIATIONS TO 'G' OPTION HOUSINGS.
  - 7) PARTS STACKABLE SIDE TO SIDE ON (2.54)/.100 CENTERS.
  - 8) PARTS CONFORM TO CLASS B OF COSMETIC SPECIFICATION PS-45499-002.

| CKT. SIZE | EDP. NO.    | ENG. NO.   | A             | B             |
|-----------|-------------|------------|---------------|---------------|
| 2         | 015-47-4022 | 70430-0246 | (2.54) .100   | (5.05) .199   |
| 3         | 015-47-4032 | 70430-0247 | (5.08) .200   | (7.59) .299   |
| 4         | 015-47-4042 | 70430-0248 | (7.62) .300   | (10.13) .399  |
| 5         | 015-47-4052 | 70430-0249 | (10.16) .400  | (12.67) .499  |
| 6         | 015-47-4062 | 70430-0250 | (12.70) .500  | (15.21) .599  |
| 7         | 015-47-4072 | 70430-0251 | (15.24) .600  | (17.75) .699  |
| 8         | 015-47-4082 | 70430-0252 | (17.78) .700  | (20.29) .799  |
| 9         | 015-47-4092 | 70430-0253 | (20.32) .800  | (22.83) .899  |
| 10        | 015-47-4102 | 70430-0254 | (22.86) .900  | (25.37) .999  |
| 11        | 015-47-4112 | 70430-0255 | (25.40) 1.000 | (27.91) 1.099 |
| 12        | 015-47-4122 | 70430-0256 | (27.94) 1.100 | (30.45) 1.199 |
| 13        | 015-47-4132 | 70430-0257 | (30.48) 1.200 | (32.99) 1.299 |
| 14        | 015-47-4142 | 70430-0258 | (33.02) 1.300 | (35.53) 1.399 |
| 15        | 015-47-4152 | 70430-0259 | (35.56) 1.400 | (38.07) 1.499 |
| 16        | 015-47-4162 | 70430-0260 | (38.10) 1.500 | (40.61) 1.599 |
| 17        | 015-47-4172 | 70430-0261 | (40.64) 1.600 | (43.15) 1.699 |
| 18        | 015-47-4182 | 70430-0262 | (43.18) 1.700 | (45.69) 1.799 |
| 19        | 015-47-4192 | 70430-0263 | (45.72) 1.800 | (48.23) 1.899 |
| 20        | 015-47-4202 | 70430-0264 | (48.26) 1.900 | (50.77) 1.999 |
| 21        | 015-47-4212 | 70430-0265 | (50.80) 2.000 | (53.31) 2.099 |
| 22        | 015-47-4222 | 70430-0266 | (53.34) 2.100 | (55.85) 2.199 |
| 23        | 015-47-4232 | 70430-0267 | (55.88) 2.200 | (58.39) 2.299 |
| 24        | 015-47-4242 | 70430-0268 | (58.42) 2.300 | (60.93) 2.399 |
| 25        | 015-47-4252 | 70430-0269 | (60.96) 2.400 | (63.47) 2.499 |