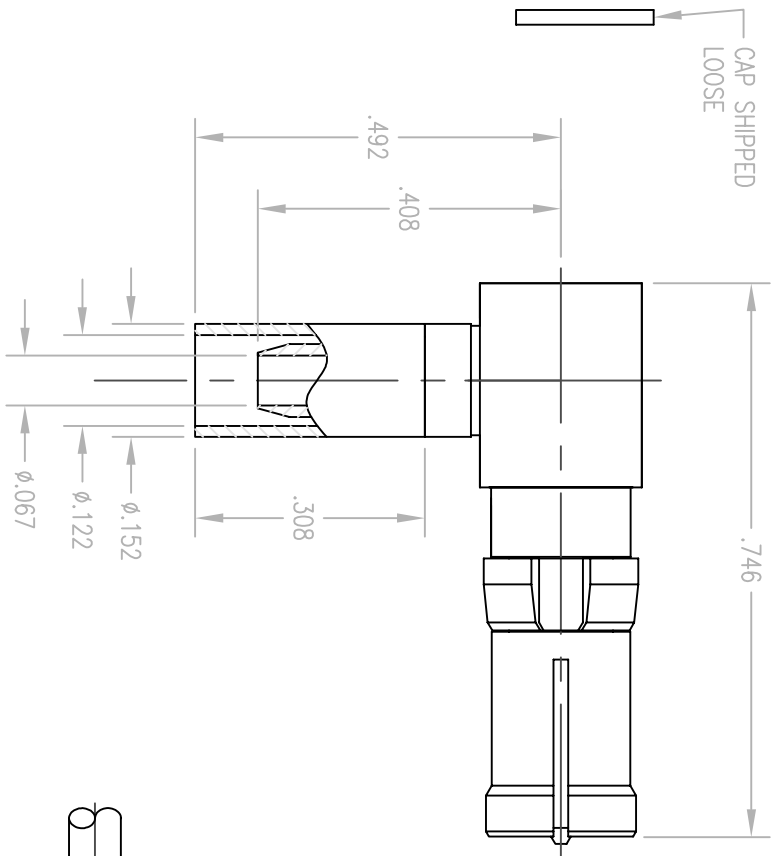


REV.	DESCRIPTION	DATE	BY	APPD.
B	NPR 2502	8/13/01	MJF	



NOTES:

1. MATERIALS:

BODY AND CAP BRASS PER ASTM B16  
 CONTACT AND FERRULE: COPPER ALLOY  
 SPRING WASHER, CLIP RING: PHOSPHOR BRONZE PER ASTM B103  
 INSULATOR: TEFLON PER ASTM D1710

2. FINISH:

BODY AND CONTACT: .000030 MIN. GOLD PER MIL G-45204 OVER  
 .000050 MIN. NICKEL PER QQ-N-290  
 FERRULE AND CAP: .000005 MIN. GOLD PER MIL-G-45204 OVER  
 .000100 MIN. NICKEL PER QQ-N-290  
 CLIP RING: .000100 MIN. NICKEL PER QQ-N-290 OVER  
 COPPER FLASH

- FOR USE WITH RG-316 CABLE OR EQUIVALENT
- FOR CABLING PROCEDURES USE CAP 9-02 WITH TRIMMING DIMENSIONS SHOWN
- CRIMP FERRULE USING .128 HEX DIE.

PER ASME Y14.5M-1994 UNLESS OTHERWISE SPECIFIED: TOLERANCES ARE IN INCHES (IN)		PER ASME Y14.5M-1994 UNLESS OTHERWISE SPECIFIED: TOLERANCES ARE IN MILLIMETERS (MM)	
DECIMALS .XX ± .01/0.254 FRACTIONS .XXX ± .005/0.127 ANGLES ± Z°		SCALE: 6:1	
CUSTOMER DRAWING DATE: 8/13/01 APPROVED: [Signature]		CHECKED: [Signature] DATE: [Blank] APPROVED: [Signature]	
TITLE: RDM RIGHT ANGLE RECEPTACLE		LITTON Winchester/Reticon 400 Park Road Westford, Connecticut 06096	
DRAWN: MJF APPROVED: [Signature]	DATE: 8/13/01	CHECKED: [Signature] DATE: [Blank]	TITLE: A 203-910-0630G SFT: 1 OF 1 REV: B