

Specifications

Insulation Resistance:	1,000M Ω min. at 500V DC
Dielectric Withstanding Voltage:	700V AC for 1 minute
Contact Resistance:	30m Ω max. at 10m /20mV max.
Operating Temperature Range:	-55°C to +170°C
Mating Cycles:	10,000 insertions min.
Pin Count:	168 contact pins

Materials and Finish

Housing: Polyetherimide (PEI), glass-filled
 Contacts: Beryllium Copper (BeCu)
 Plating: Gold over Nickel



Features

- Card thickness 1.27mm
- 7 different positioning indicators
- Possible customer DIMM modules: Toshiba, NEC, OKI, Hitachi, Fujitsu, Siemens and Infineon

Part Number (Details)

IC-438 - * - * - MF

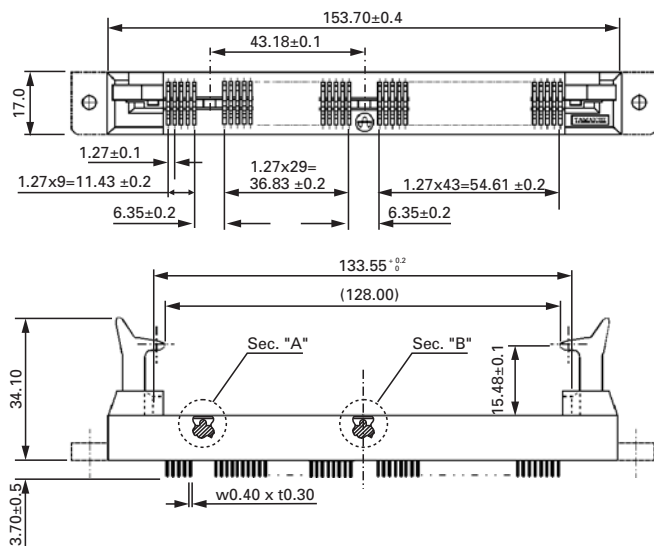
Series No.

Positioning Detail 1 (see Section "A")

Positioning Detail 2 (see Section "B")

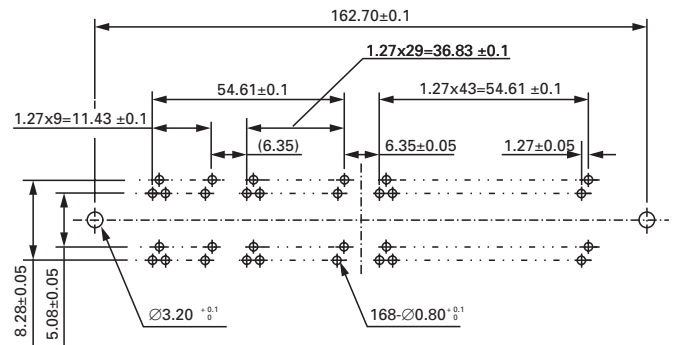
MF = Flanged
 Unmarked = Not Flanged

Outline Socket Dimensions



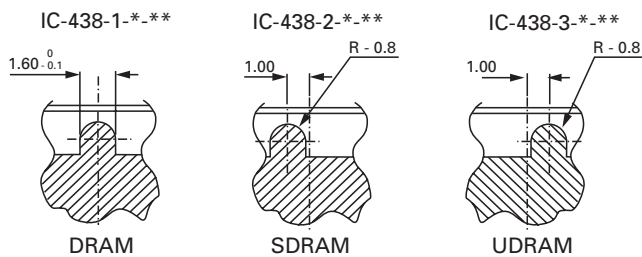
Recommended PC Board Layout

Top View from Socket

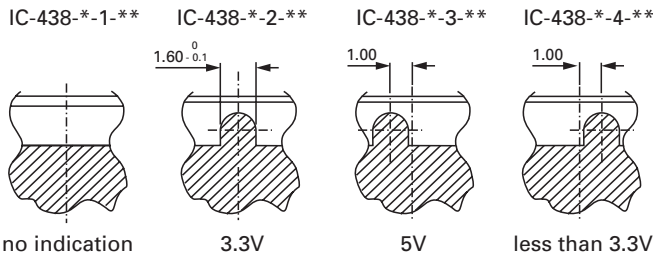


Positioning Details

Section "A" (DRAM Key Indicators)



Section "B" (Voltage Key Indicators)



Matching Module Dimensions

