
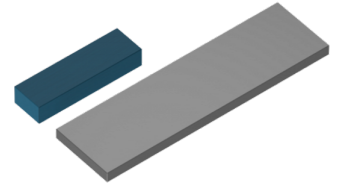


NEOREC35UX



Series	NEOREC
Material Name	35UX
Feature	General material
Application	Commercial Grade Industrial equipment Automotive Grade Automotive Grade (High temp)
Temperature_Classification	180°C
Status	 Production (Not Recommended for New Design)



Magnetic Characteristics	
Residual Magnetic Flux Density [Br] / mT	1200 ±30
Coercive Force [Hcb] / (kA / m)	923 ±56
Coercive Force [Hcj] / (kA / m)	2387 Min.
Maximum Energy Product [BH] / (kJ / m³)	271 ±16

! Images are for reference only and show exemplary products.
! This PDF document was created based on the data listed on the TDK Corporation website.
! All specifications are subject to change without notice.