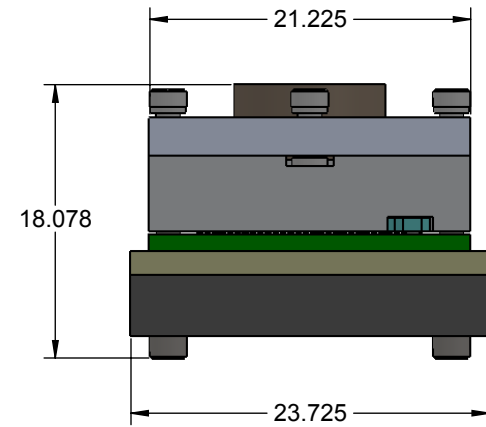
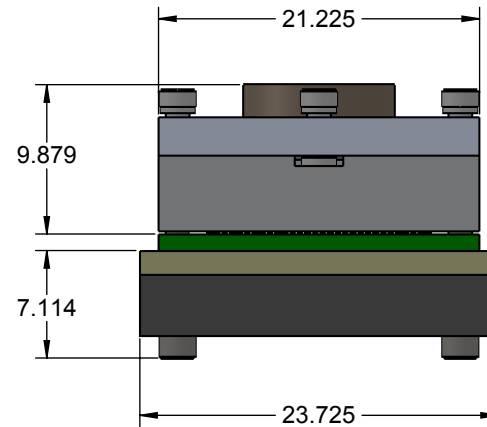
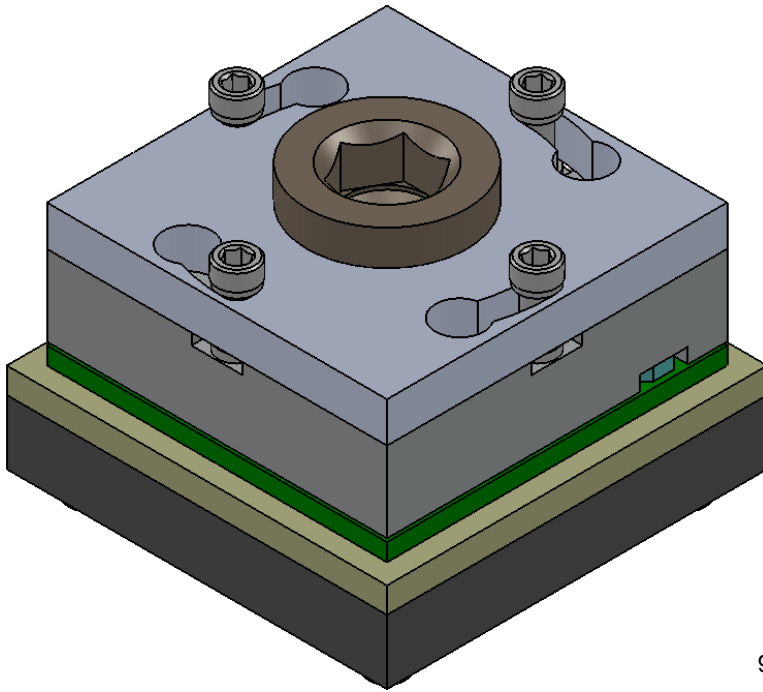


SM DIRECT MOUNT, SOLDERLESS SOCKET FOR TEST APPLICATIONS

Features


- Wide temperature range (-55C to +150C).
- High current capability (up to 4A).
- Excellent signal integrity at high frequencies.
- Low and stable contact resistance for reliable production yield.
- Highly compliant to accommodate wide co-planarity variations.

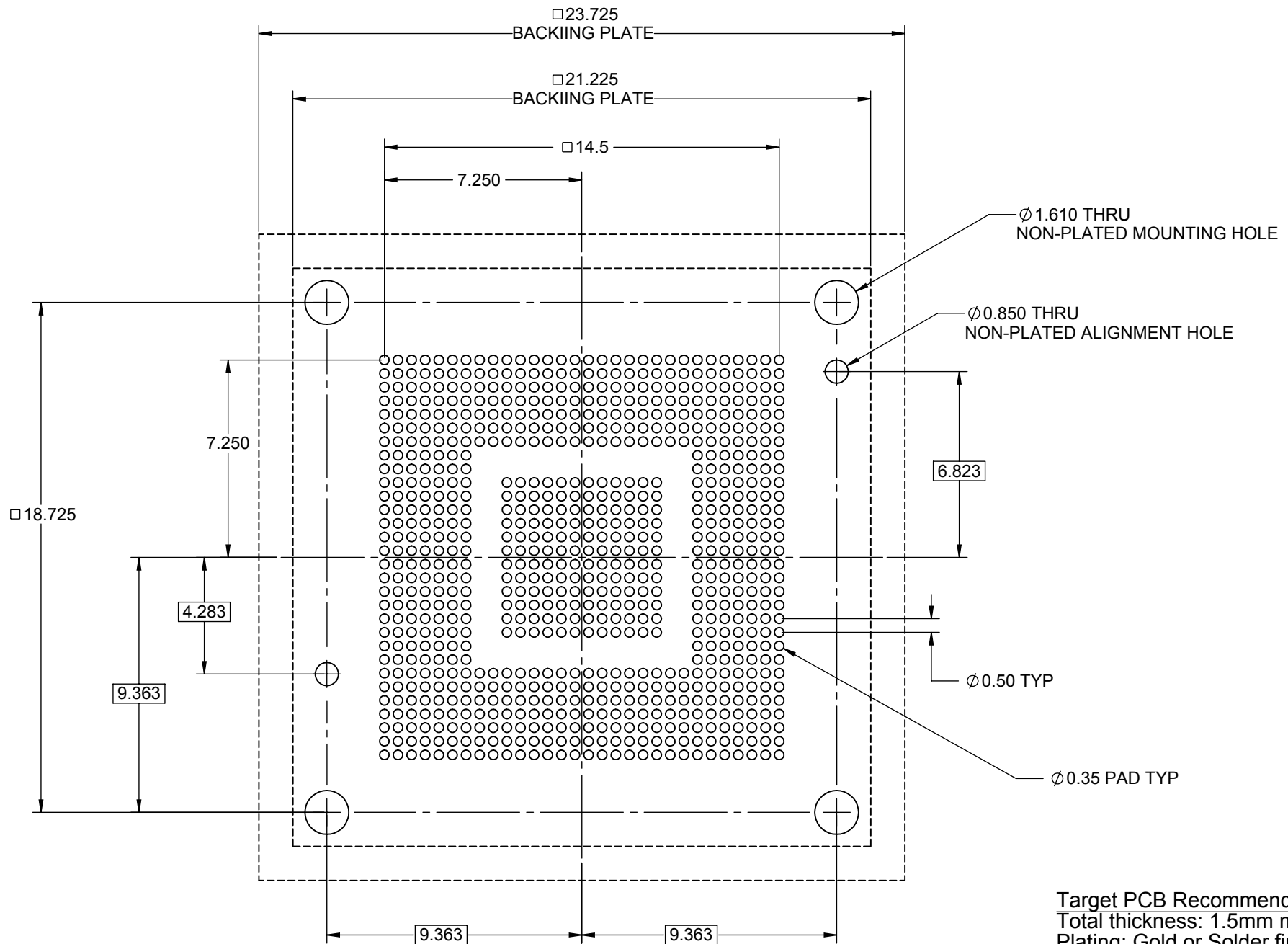


Description: SM BGA Socket

Primary dimension units are millimeters, Secondary dimension units are [inches].

Tolerances: Hole diameters $\pm 0.03\text{mm}$ [$\pm 0.001''$], Pitches (from true position) $\pm 0.025\text{mm}$ [$\pm 0.001''$], substrate thickness tolerance $\pm 10\%$, all other tolerances $\pm 0.13\text{mm}$ [$\pm 0.005''$] unless stated otherwise. Materials and specifications are subject to change without notice.

 SM-BGA-9025 Drawing Ironwood Electronics, Inc. Tele: (800) 404-0204 www.ironwoodelectronics.com	Material: N/A Finish: N/A Weight: 16.52	STATUS: Released	SHEET: 1 OF 4	REV. A
		DRAWN BY: M. Raske	SCALE: 2:1	
		FILE: SM-BGA-9025 Dwg	DATE: 12/20/2012	




Target PCB Recommendations
 Total thickness: 1.5mm min.
 Plating: Gold or Solder finish

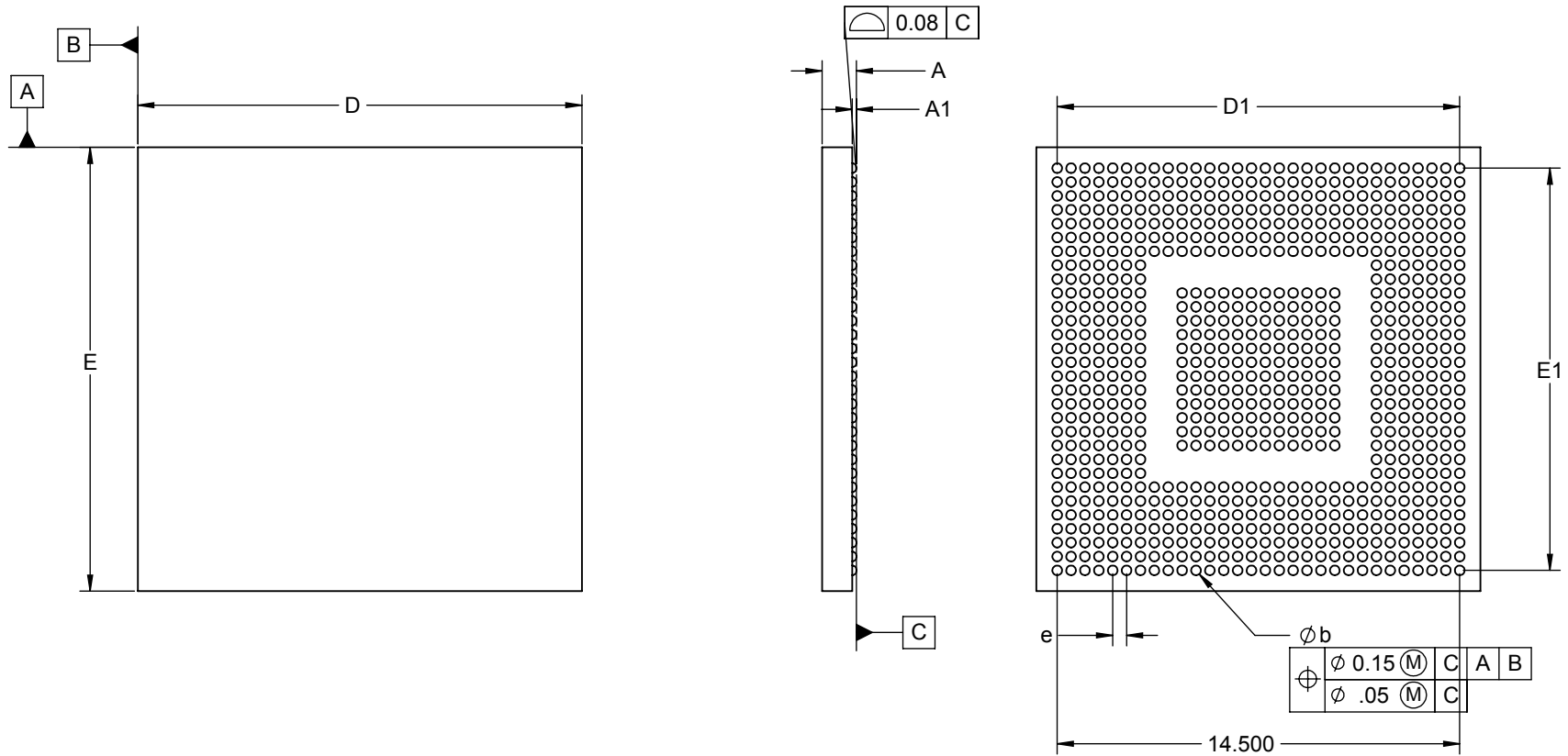
Description: Recommended PCB layout

Primary dimension units are millimeters, Secondary dimension units are [inches], Weight is in grams.

Tolerances: Hole diameters $\pm 0.03\text{mm}$ [$\pm 0.001''$], Pitches (from true position) $\pm 0.025\text{mm}$ [$\pm 0.001''$], substrate thickness tolerance $\pm 10\%$, all other tolerances $\pm 0.13\text{mm}$ [$\pm 0.005''$] unless stated otherwise. Materials and specifications are subject to change without notice.

 <p>SM-BGA-9025 Drawing Ironwood Electronics, Inc. Tele: (800) 404-0204 www.ironwoodelectronics.com</p>	Material: N/A Finish: N/A Weight: 16.52	STATUS: Released DRAWN BY: M. Raske FILE: SM-BGA-9025 Dwg	SHEET: 2 OF 4 SCALE: 5:1 DATE: 12/20/2012	REV. A

IRONWOOD PACKAGE CODE: BGA788C1




1. Dimensions are in millimeters.
2. Interpret dimensions and tolerances per ASME Y14.5M-1994.
3. Dimension b is measured at the maximum solder ball diameter, parallel to datum plane Z.
4. Datum Z (seating plane) is defined by the spherical crowns of the solder balls.
5. Parallelism measurement shall exclude any effect of mark on top surface of package.

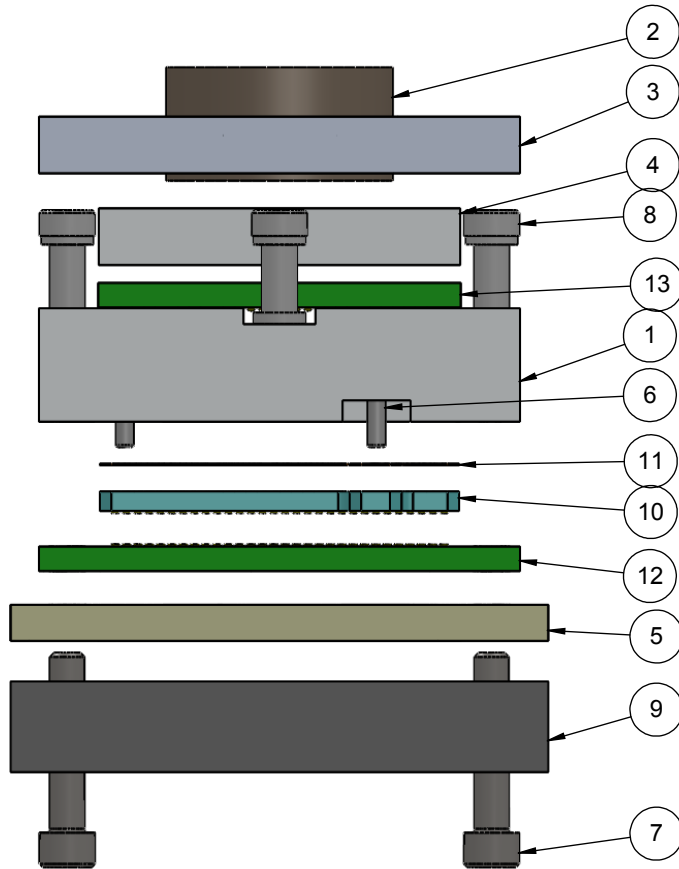
DIM	MIN	MAX
A		1.70
A1	0.15	
b	0.25	0.35
D	15.90	16.10
E	15.90	16.10
D1	14.50 BSC	
E1	14.50 BSC	
e	0.50 BSC	

Description: BGA

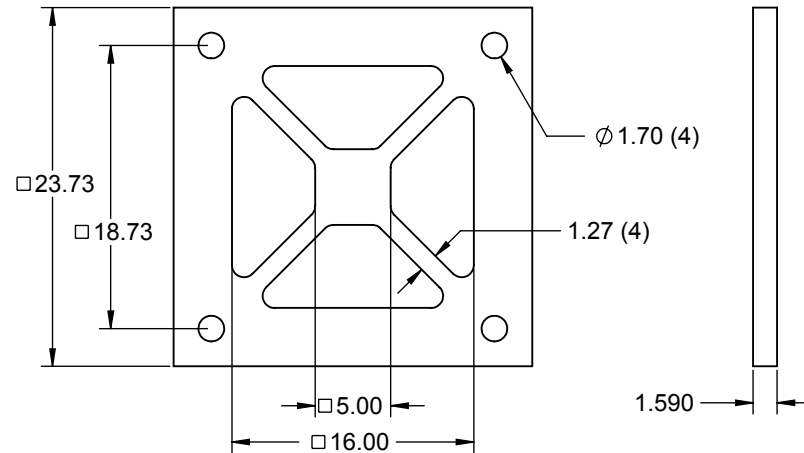
Primary dimension units are millimeters, Secondary dimension units are [inches], Weight is in grams.

Tolerances: Hole diameters $\pm 0.03\text{mm}$ [$\pm 0.001^{\circ}$], Pitches (from true position) $\pm 0.025\text{mm}$ [$\pm 0.001^{\circ}$], substrate thickness tolerance $\pm 10\%$, all other tolerances $\pm 0.13\text{mm}$ [$\pm 0.005^{\circ}$] unless stated otherwise. Materials and specifications are subject to change without notice.

 SM-BGA-9025 Drawing Ironwood Electronics, Inc. Tele: (800) 404-0204 www.ironwoodelectronics.com	Material: N/A Finish: N/A Weight: 16.52	STATUS: Released DRAWN BY: M. Raske FILE: SM-BGA-9025 Dwg	SHEET: 3 OF 4 SCALE: 4:1 DATE: 12/20/2012	REV. A
--	---	---	---	--------




ITEM NO.	DESCRIPTION	Material
1	Socket Base, SM 16mm Centered	7075-T6 Alumium Alloy
2	Compression Screw M10	7075-T6 Alumium Alloy
3	Socket Lid	7075-T6 Aluminum Alloy
4	Compression Plate	7075-T6 Aluminum Alloy
5	Insulating plate for 19mm IC socket	FR4 Standard
6	Dowel Pin, 1/32" x 3/16", SS	Chrome Stainless Steel
7	#0-80 X .313 LG, SOC HD CAP SCREW, ALLOY STL, BLK OXIDE	Alloy Steel
8	#0-80 Shoulder Screw, 0.090" thread length	Stainless Steel (303)
9	Backing Plate	7075-T6 Alumium Alloy
10	SM Contactor	Material <not specified>
11	Ball Guide	Kapton Polyimide/Cirlex
12	Test PCB, 16mm sq, 30x30	Material <not specified>
13	Test Chip, 16mm, 30x30	Material <not specified>



Description: Skt, Insulation Plate, Pin Det

Primary dimension units are millimeters, Secondary dimension units are [inches], Weight is in grams.

Tolerances: Hole diameters ±0.03mm [±0.001"], Pitches (from true position) ±0.025mm [±0.001"], substrate thickness tolerance ±10%, all other tolerances ±0.13mm [±0.005"] unless stated otherwise. Materials and specifications are subject to change without notice.

 <p>SM-BGA-9025 Drawing Ironwood Electronics, Inc. Tele: (800) 404-0204 www.ironwoodelectronics.com</p>	<p>Material: N/A Finish: N/A Weight: 16.52</p>	STATUS: Released	SHEET: 4 OF 4	REV. A
		DRAWN BY: M. Raske	SCALE: 2:1	
		FILE: SM-BGA-9025 Dwg	DATE: 12/20/2012	