

RL-2228

PC MOUNT POWER INDUCTORS

DESCRIPTION

- PC Mount Power Inductors

ENVIRONMENTAL DATA

- Storage temperature range: -55°C to +130°C
- Operating temperature range: -40°C to +130°C

PACKAGING INFORMATION

- Packaging information: pg. 493

FEATURES & APPLICATIONS

- Compact series of high current inductors ideally suited for noise filtering in switching regulated power supplies, power filter networks, power amplifiers, SCR and TRIAC control circuits
- Core construction provides the highest saturation current available in low cost power chokes

Verify operation with sample in actual circuit. Order samples at www.rencousa.com.

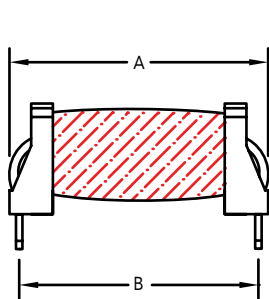
MECHANICAL DIMENSIONS

U.S. Standard (mm)

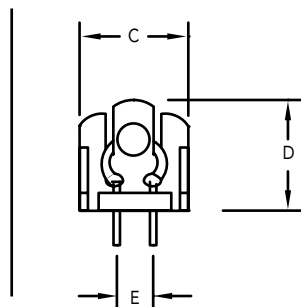
PART NUMBER	A (MAX.)	B (MAX.)	C (MAX.)	D (MAX.)	E (MAX.)
RL-2228	1.58 (40.13)	1.40 (35.56)	0.64 (16.26)	0.64 (16.26)	0.33 (8.38)

PART WEIGHT	F ±0.010 (0.3)	G ±0.010 (0.3)
18.0g (0.64oz)	0.30 (7.62)	1.40 (35.56)

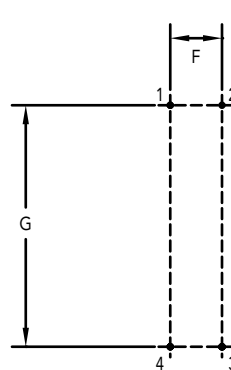
FRONT VIEW



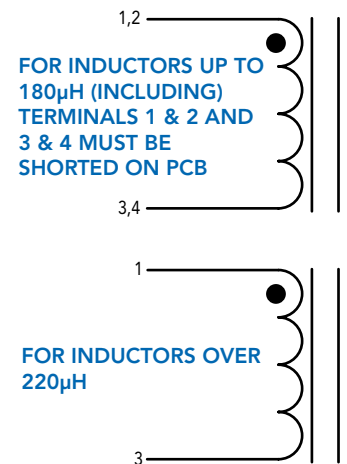
SIDE VIEW



RECOMMENDED PCB LAOUT



SCHEMATIC



RENCO ELECTRONICS INC.

595 International Place, Rockledge, FL 32955-4200 USA • www.rencousa.com • ISO 9001 Certified
Toll Free Engineering Hot Line: 800.645.5828 • P: 321.637.1000 • F: 321.637.1600



RL-2228

Renco Part No. RL-2228	Inductance (μ H)	DCR Max. (Ohms)	Isat (A)	Irms (A)
RL-2228-3.9	3.90	0.008	32.70	10.0
RL-2228-4.7	4.70	0.008	30.30	10.0
RL-2228-5.6	5.60	0.010	28.30	10.0
RL-2228-6.8	6.80	0.010	25.00	10.0
RL-2228-8.2	8.20	0.010	22.40	10.0
RL-2228-10	10.0	0.011	20.20	10.0
RL-2228-12	12.0	0.012	19.30	10.0
RL-2228-15	15.0	0.014	17.00	10.0
RL-2228-18	18.0	0.019	15.70	8.0
RL-2228-22	22.0	0.023	14.20	8.0
RL-2228-27	27.0	0.024	12.50	8.0
RL-2228-33	33.0	0.026	11.50	8.0
RL-2228-39	39.0	0.028	10.60	8.0
RL-2228-47	47.0	0.041	9.60	6.3
RL-2228-56	56.0	0.045	8.80	6.3
RL-2228-68	68.0	0.053	8.00	6.3
RL-2228-82	82.0	0.059	7.30	6.3
RL-2228-100	100.0	0.080	6.50	5.0
RL-2228-120	120.0	0.084	6.00	5.0
RL-2228-150	150.0	0.094	5.40	5.0
RL-2228-180	180.0	0.127	4.90	4.0
RL-2228-220	220.0	0.136	4.40	3.2
RL-2228-270	270.0	0.149	4.00	3.2
RL-2228-330	330.0	0.164	3.60	3.2
RL-2228-470	470.0	0.241	3.00	2.5
RL-2228-560	560.0	0.340	2.80	2.0
RL-2228-680	680.0	0.380	2.50	2.0
RL-2228-820	820.0	0.420	2.30	2.0
RL-2228-1000	1000.0	0.460	2.10	2.0
RL-2228-1200	1200.0	0.650	1.90	1.6
RL-2228-1500	1500.0	0.720	1.70	1.6
RL-2228-1800	1800.0	0.790	1.50	1.6
RL-2228-2200	2200.0	1.100	1.40	1.3
RL-2228-2700	2700.0	1.500	1.30	1.0
RL-2228-3300	3300.0	1.700	1.10	1.0
RL-2228-3900	3900.0	1.800	1.05	1.0
RL-2228-4700	4700.0	2.500	0.96	0.8
RL-2228-5600	5600.0	2.800	0.88	0.8
RL-2228-6800	6800.0	3.800	0.80	0.63
RL-2228-8200	8200.0	4.200	0.73	0.63

Renco Part No. RL-2228	Inductance (μ H)	DCR Max. (Ohms)	Isat (A)	Irms (A)
RL-2228-10000	10000.0	4.700	0.66	0.63
RL-2228-12000	12000.0	6.400	0.60	0.50
RL-2228-15000	15000.0	7.200	0.54	0.50
RL-2228-18000	18000.0	9.900	0.50	0.40
RL-2228-22000	22000.0	11.000	0.44	0.40
RL-2228-27000	27000.0	15.200	0.40	0.32
RL-2228-33000	33000.0	16.800	0.36	0.32
RL-2228-39000	39000.0	23.200	0.33	0.25
RL-2228-47000	47000.0	25.500	0.30	0.25
RL-2228-56000	56000.0	27.800	0.28	0.25
RL-2228-68000	68000.0	39.300	0.25	0.20
RL-2228-82000	82000.0	43.200	0.23	0.20
RL-2228-100000	100000.0	59.800	0.21	0.16
RL-2228-120000	120000.0	65.500	0.19	0.16
RL-2228-150000	150000.0	73.200	0.17	0.16

NOTES:

1. ELECTRICAL SPECIFICATIONS MEASURED AT 25°C
2. Isat - DC CURRENT THAT WILL CAUSE INDUCTANCE TO DROP BY 5%
3. Irms - CURRENT THAT CAUSES THE TEMPERATURE TO RISE APPROX. 40°C ABOVE AMBIENT OF 25°C
4. INDUCTANCE \pm 10% TESTED AT 10 kHz, 0.1 Vrms



RENCO ELECTRONICS INC.

595 International Place, Rockledge, FL 32955-4200 USA • www.rencousa.com • ISO 9001 Certified
Toll Free Engineering Hot Line: 800.645.5828 • P: 321.637.1000 • F: 321.637.1600

