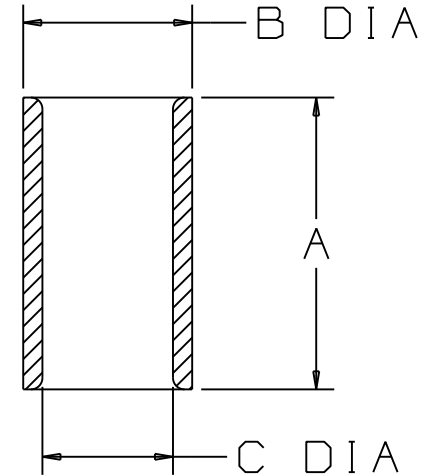


PANDUIT PART NUMBER	WIRE COMBINATION (COMBINATION OF ANY TWO)	DIMENSIONS in.		
		A $\pm .03$	B $\pm .01$	C $\pm .01$
PS18	#22 TO #18	.29 (7.4)	.13 (3.3)	.10 (2.5)
PS16	#20 TO #16	.29 (7.4)	.16 (4.1)	.12 (3.0)
PS12	#14 TO #12	.38 (9.7)	.22 (5.6)	.17 (4.3)

NOTES:

- UL LISTED AND CSA CERTIFIED FOR:  
A. SOLID OR STRANDED COPPER WIRE
- MATERIAL: BRASS, TIN PLATED
- SEE [www.panduit.com](http://www.panduit.com) FOR PART NUMBER SUFFIX DESIGNATION FOR PACKAGE SIZE.
- DIMENSIONS IN BRACKETS ARE IN MILLIMETERS
- INSTALLATION TOOLS:  
A. UL LISTED AND CSA CERTIFIED: CT-100, CT-200  
B. PANDUIT APPROVED: CT-260
- WIRE STRIP LENGTH:  $5/16^{+1/32}_{-0}$  (7.9  $^{+.8}_{-0}$ )  
 $7/16^{+1/32}_{-0}$  (11.1  $^{+.8}_{-0}$ ) FOR PS12



LISTED  
587H  
E52164



CERTIFIED  
LR31212

											TINLEY PARK, ILLINOIS		
												NON-INSULATED PARALLEL SPLICE	
06	5/11	SB		Added Note #3						DRAWN BY DRL	CHK'D 		SCALE NONE
REV	DATE	BY	CHK	DESCRIPTION	ECN #	CUST	PM						