

DETAIL "A"  
CHAMFER  
SCALE=6:1

NOTES: UNLESS OTHERWISE SPECIFIED

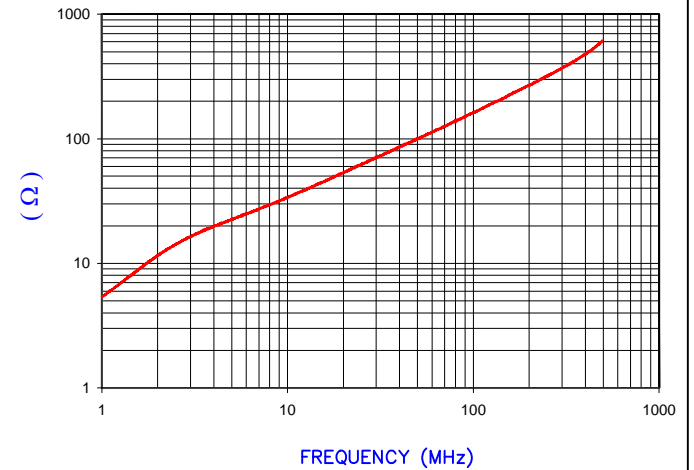
1. COSMETIC SPECIFICATION REFER TO WI-QA-038.

**UNCONTROLLED DOCUMENT**



IMPEDANCE ( Z )			
Frequency	25 MHz	100 MHz	300 MHz
Nominal (REF)	63 Ω	170 Ω	380 Ω
Minimum	- Ω	136 Ω	- Ω

Z vs. FREQUENCY  
(REF. ONLY)

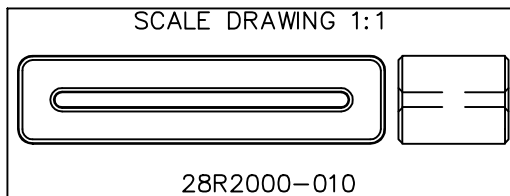


AGILENT E4991A Impedance/Material Analyzer  
HP 16092A Test Fixture, REF # 3026

FERRITE CORE DIMENSIONS (SPEC):mm[Inches]

A	50.80 [2.000]	+	0.90 [.035]
B	40.60 [1.598]	+	0.70 [.028]
C	15.20 [.598]	+	0.65 [.026]
D	12.20 [.480]	-	0.40 [.016]
E	2.00 [.079]	-	0.20 [.008]

WEIGHT/1000 39.93 kgs [88.02 Lbs]



DIMENSIONS ARE IN mm [INCHES].				This print is the property of Laird Tech. and is loaned in confidence subject to return upon request and with the understanding that no copies shall be made without the written consent of Laird Tech. All rights to design or invention are reserved.		Laird	
G	UPDATE COMPANY LOGO	01/07/13	QIU	PROJECT/PART NUMBER: <b>28R2000-010</b>		REV <b>G</b>	DRAWN BY: IS
F	UPDATE MIN Z SPECS & COMPANY LOGO	07/27/07	TMB				
E	UPDATE MM DIMS FOR B,D AND E, REV TOLS	06/28/04	JRK				
D	UPDATE MIN Z SPEC @100 Mhz ADD REF #	02/16/04	JRK				
C	NEW CNZ FORMAT UPDATE Z SPECS CHG TOLS D & E, REM DIMS F&G	02/27/03	JRK				
B	ADDED RADII DIM & DETAILS	03/05/98	DTR	DATE: 02/02/98	SCALE: 2:1	MATERIAL: <b>FERRITE</b>	
A	ORIGINAL DRAFT	02/02/98	IS	CAD #	TOOL # R2000		
REV	DESCRIPTION	DATE	INT	28R2000-010-G			