



Oscilent Corporation

PRODUCT SPECIFICATION

REV A January 2011

Oscilent Controlled Document

Ordering Code / Part Number	Product Description
813-SL140.0M-15	Low-Loss 140MHz IF SAW Filter 14.8MHz Bandwidth

Specification Contents

- o Mechanical Dimensions
- o Test Circuit
- o Maximum Ratings
- o Electrical Specification
- o Frequency Response

Notes

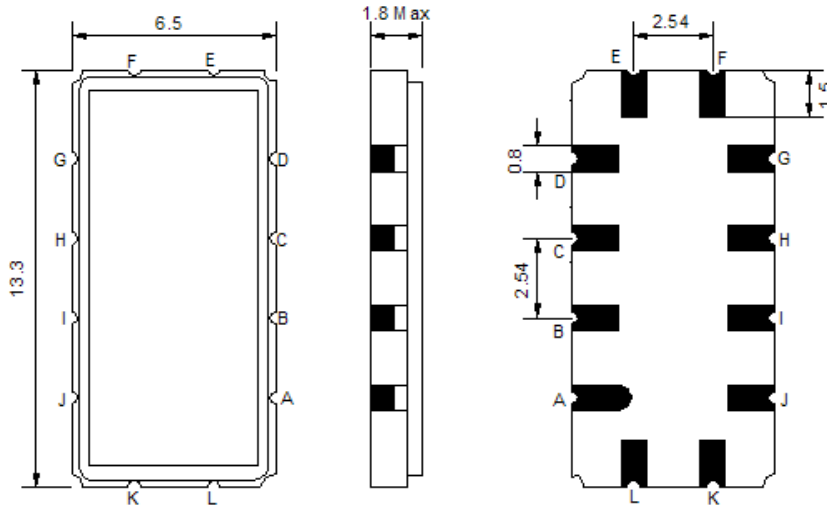
- o Electrostatic Sensitive Device (ESD) 
- o Avoid excessive ultrasonic exposure
- o Solderability compatible with JEDEC J-STD-020C Pb-free process, 260°C peak reflow temperature
- o This product complies with EU directive 2002/95/EC (RoHS compliance)



Oscilent Corporation
Telephone: 1.949.252.0522
Fax: 1.949.252.0522
Email: sales@oscilent.com

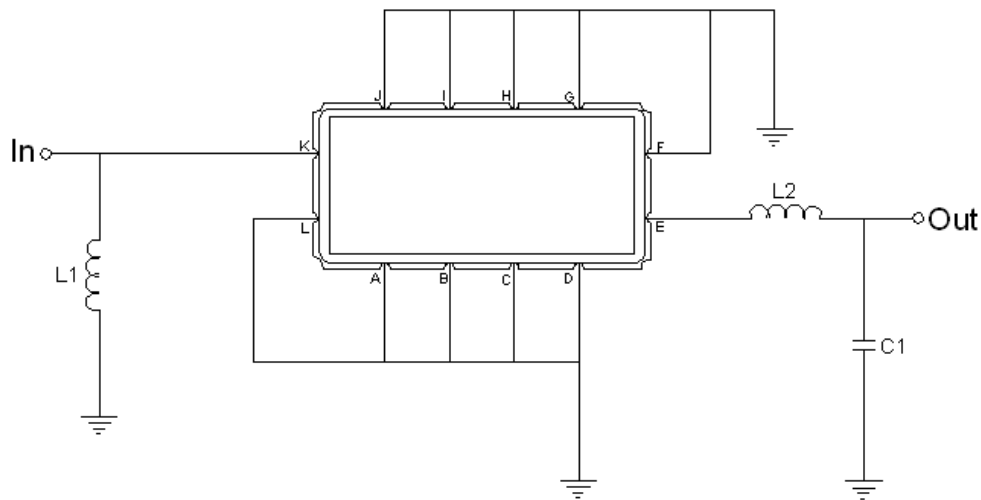


Mechanical Dimensions (mm)



Pin Description	
A, B, C, D, F, G, H, I, J, L	Ground
K	Input
E	Output

Test Circuit



Test Fixture & Values	
Input	L1=39nH, Q > 40
Output	L2=47nH, Q > 40, C2=27pF
Source/Load Impedance	50 Ω

**Maximum Ratings**

Parameters Description	Unit	Minimum	Typical	Maximum
Operating Temperature Range	°C	-30	-	+80
Storage Temperature Range	°C	-40	-	+85
Maximum DC Voltage	V	-	-	10
Maximum Input Power	dBm	-	-	10
Source Impedance (single ended) ⁽¹⁾	Ω	-	50	-
Load Impedance (single ended) ⁽¹⁾	Ω	-	50	-

Notes: With Matching Network (Ref. Testing Environment Circuit as shown above).

Those impedances could be modified with different impedance values and/or structures, if necessary.

Electrical Specification

Parameters Description	Unit	Minimum	Typical	Maximum
Center Frequency (Fo)	MHz	139.8	140.0	140.2
Insertion Loss at Fo	dB	-	8.0	11.0
Amplitude Ripple Variation	dB _{p-p}	-	0.62	1.0
Group Delay Variation	nsec	-	110	180
Absolute Delay at Fo	μsec	-	0.98	-
Temperature Coefficient	ppm/°C	-	-86	-
Bandwidth at -1.0 dB	MHz	13.6	13.8	-
Bandwidth at -3.0 dB	MHz	14.8	15.05	-
Bandwidth at -40.0 dB	MHz	-	18.35	18.6
Bandwidth at -45.0 dB	MHz	-	18.6	19.0
Relative Attenuation:				
Lower sidelobe	dB	45	48	-
Upper sidelobe	dB	40	45	-



Frequency Response

