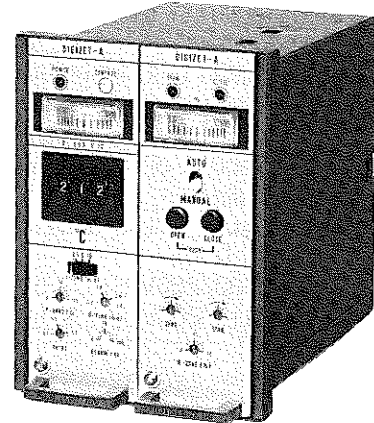


**POSITION FEEDBACK TYPE
DIGITAL SETTING TEMPERATURE CONTROLLER DIGIZET-A**

DATA SHEET

PZAG~L

This is an electronic instrument for operating motor-driven control devices while receiving input directly from various types of thermocouples or temperature measuring resistance bulbs. The instrument assures highly precise control through accurate digital temperature setting and positioning of control devices by position feedback systems. As control devices for use with the temperature controller DIGIZET-A, there are a variety of products prepared such as damper controller, globe valves and butterfly valves operated with FUJI control motor featuring field-proven performance.



FEATURES

1. Digital system assures fail-free accurate temperature setting.
2. Position feedback type PID action is performed for accurate control with manual controller.
3. Since the instrument is designed as an independent unit which can accommodate up to three electric-electric positioners, it is possible to operate up to three control devices in parallel.
4. A control deviation indicator and an opening indicator are provided as standard equipment for each monitoring of operating conditions.
5. Highly reliable solid state design allows direct mounting on a machine.

SPECIFICATIONS

Input signal, setting range and setting accuracy :

Code No.	Input signal	Setting range	Setting accuracy
1	Pt resistance bulb	0 to 499°C	±2°C over full range
2	IC thermocouple	0 to 499°C	±3°C over full range
3	CA thermocouple	0 to 999°C	±3°C ; 0 to 599°C ±5°C ; 600 to 999°C
4	CRC thermocouple	0 to 799°C	±3°C ; 0 to 599°C ±5°C ; 600 to 799°C
5	PR thermocouple	0 to 1699°C	±7°C ; 1000 to 1600°C
*6	Pt resistance bulb	-99.9 to +99.9°C	±0.5°C ; 0 to +99.9°C ±0.75°C ; -50 to -0.1°C
*7	CA thermocouple	0 to 1199°C	±3°C ; 0 to 599°C ±5°C ; 600 to 1199°C

Note: "Code No." indicates 5th digit of the instrument code symbols.
Even when the dial is set outside the "setting range" listed above, setting signal is electrically limited and cannot exceed the limits.

Allowable external resistance :

Thermocouple input, less than 100Ω

Allowable wiring resistance :

Resistance bulb input, less than 10Ω per wire

Deviation indicator :

Scale length 30mm
Scale range ±20°C for resistance bulb input
±50°C for thermocouple input

Control action: PID action with overshoot preventive circuit

P ; 5 to 50°C for resistance bulb input

10 to 100°C for thermocouple input

I ; 2.5, 5, 10 min
(changeable in 3 steps)

D ; 0.1 to 2.5 min
(continuously changeable)

N (neutral zone) ; 0 to 10% (continuously changeable) of control device full span

Feedback resistance :

Potentiometer having resistance variable range of 135Ω

With zero point and full span adjusting functions

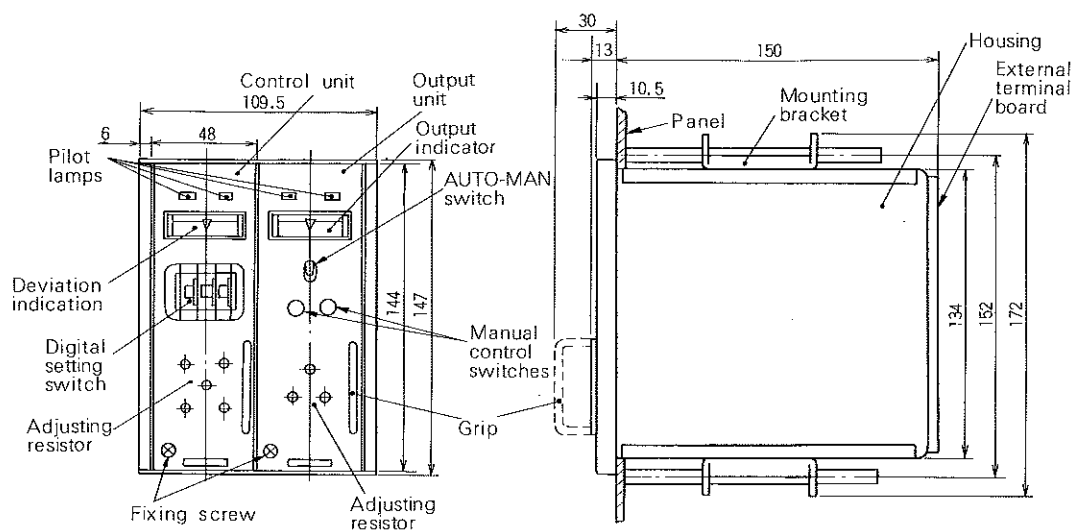
Output signal : 1a contact each in opening and closing directions

Contact capacity AC 100V, 0.3A (resistance load)

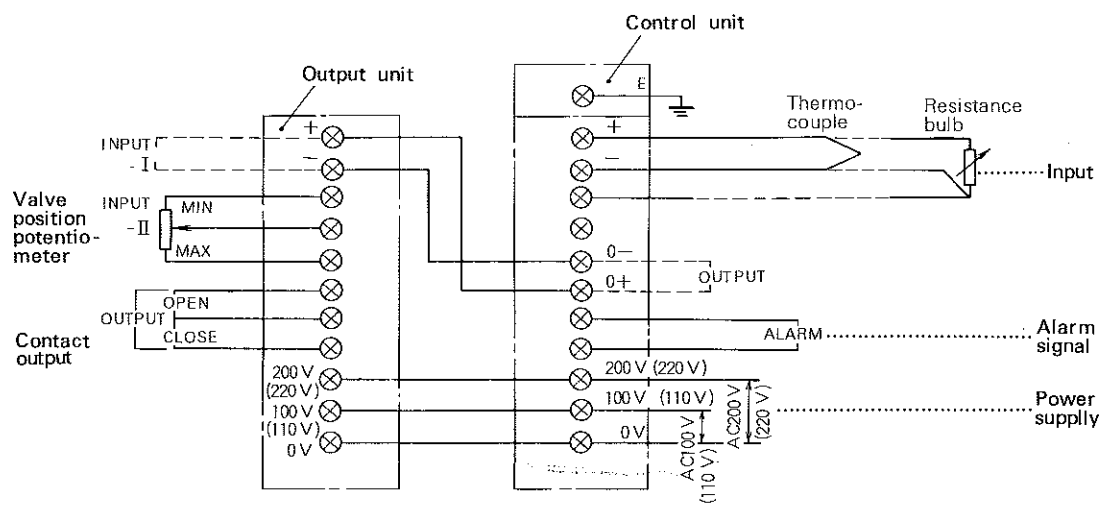
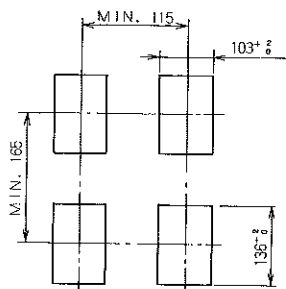
AUTO-MAN switching :

Balanceless bumpless switching with a selector switch on the front panel

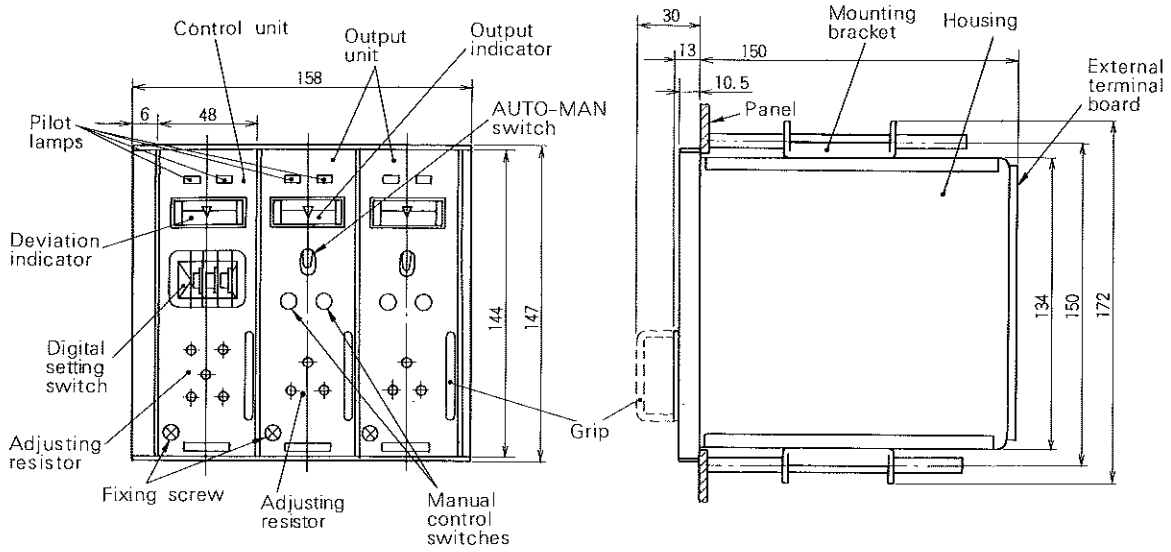
EXTERNAL VIEW (Unit:mm) AND CONNECTION DIAGRAM



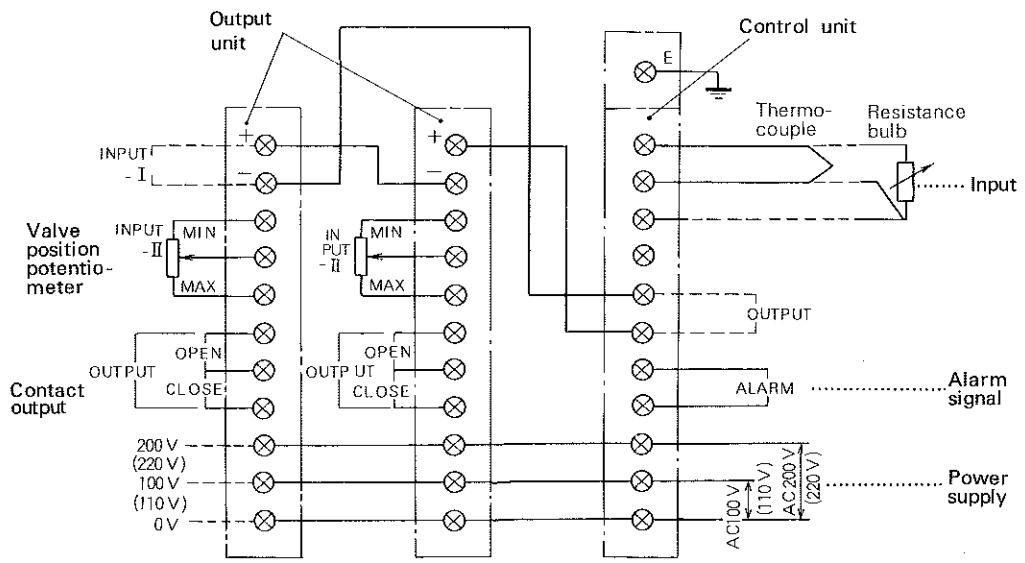
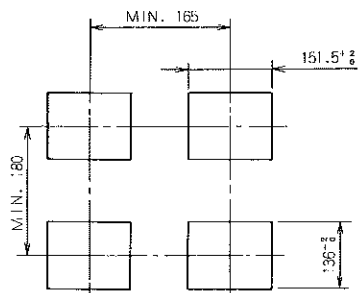
Panel Cutout



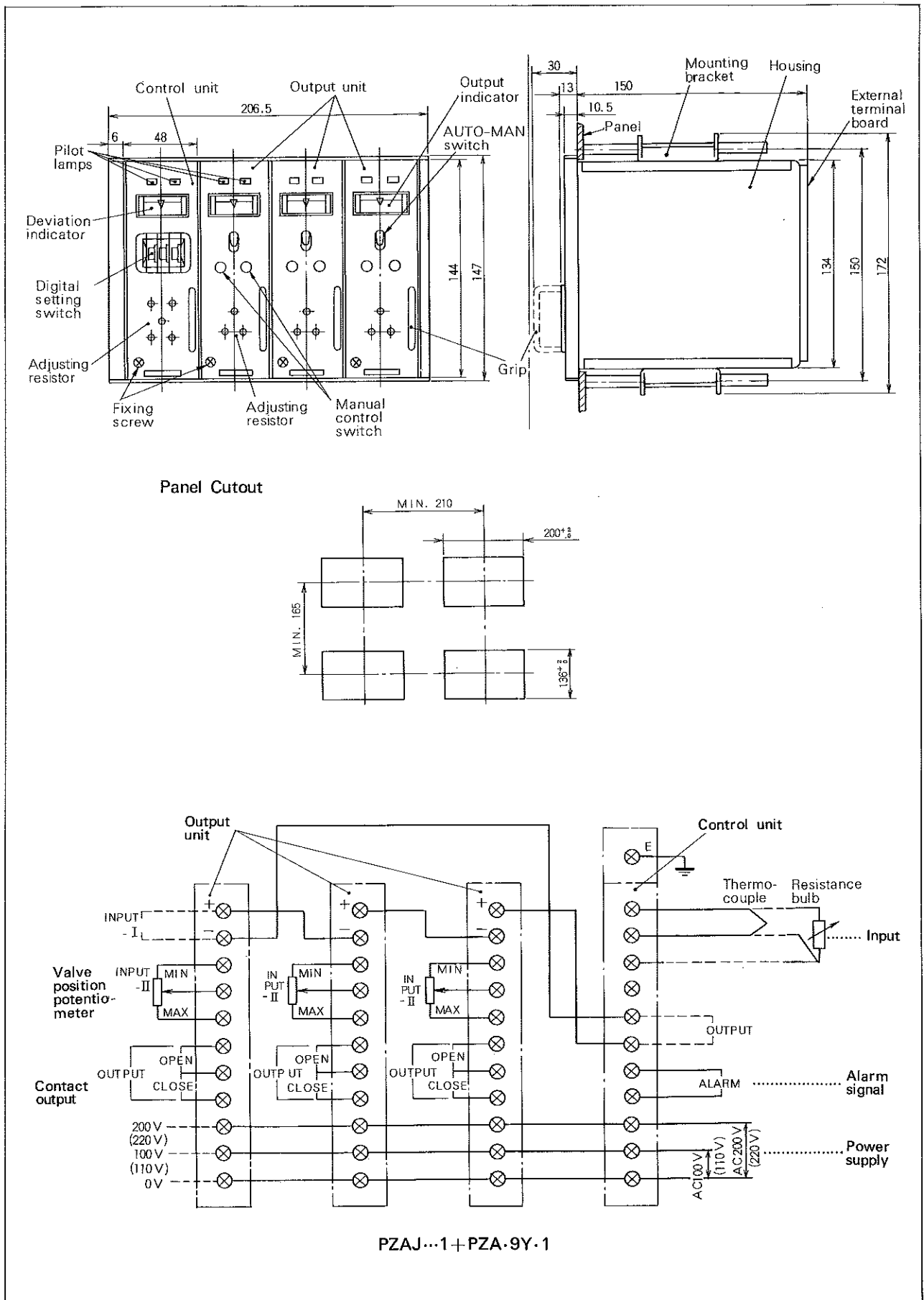
PZAG... 1+PZA.9Y.1



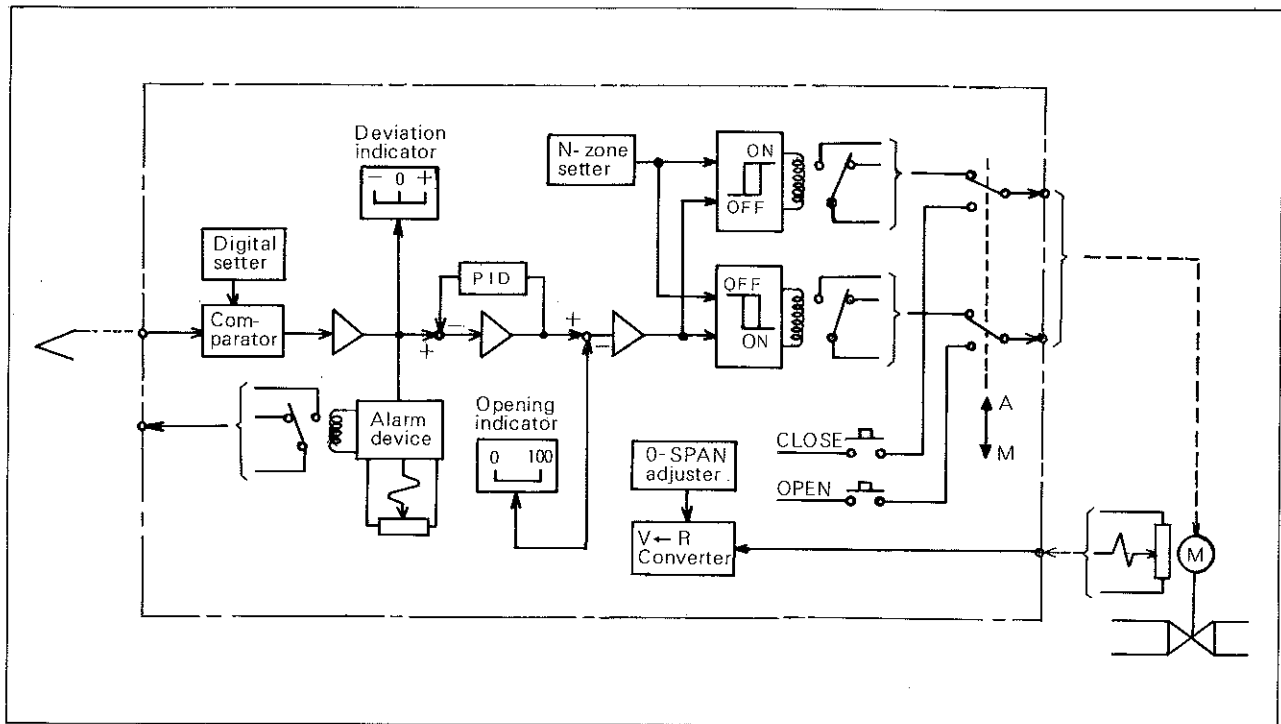
Panel Cutout



PZAH...1+PZA·9Y·1



BASIC CIRCUITS DIAGRAM



- Note) · Alterations reserved without notice.
 · Contact us for specifications unlisted herein.
 · Asterisk (*) items; Non-standard.



Fuji Electric Co.,Ltd.

New Yurakucho Bldg., 12-1 Yurakucho 1-chome,
 Chiyoda-ku, Tokyo, 100 Japan
 Phone: Tokyo 211-7111
 Telex: J22331 FUJIELEC
 Cable Address: DENKIFUJI TOKYO