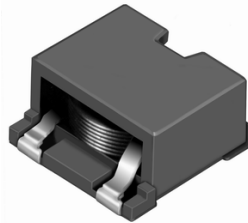


SMD Power Inductor CDEP147



Halogen Free



Description

- Ferrite core construction.
- Magnetically shielded.
- L × W × H: 14.9 × 14.9 × 8.0 mm Max.
- Product weight: 5.3g(Ref.)
- Moisture Sensitivity Level: 1
- RoHS compliance.
- Halogen Free available.

Environmental Data

- Operating temperature range: -40°C~+125°C (including coil's self temperature rise)
- Storage temperature range: -40°C~+125°C
- Solder reflow temperature: 260 °C peak.

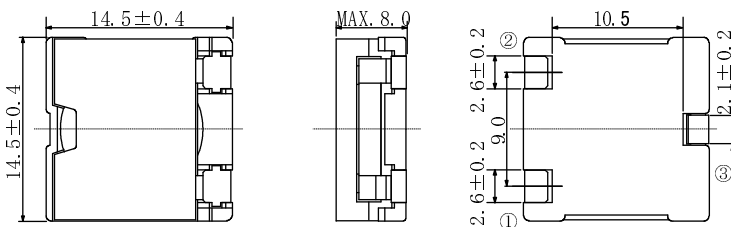
Packaging

- Carrier tape and reel packaging
- 13.0" diameter reel
- 300pcs per reel

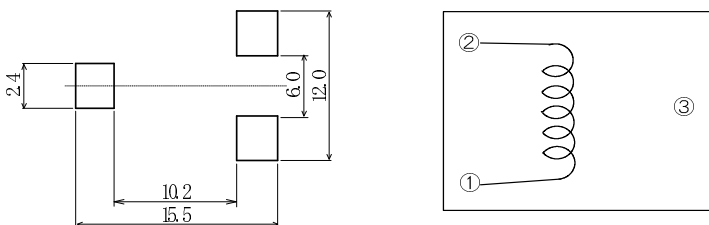
Applications

- Ideally used in personal computer CPU power supply.

Dimension - [mm]



Land pattern and Schematics - [mm]



Electrical Characteristics

Electrical Characteristics-low D.C.R. type

PART NO.	STAMP	INDUCTANCE [WITHIN] ※1	D.C.R. (mΩ) [MAX.] (Typ.) (at 20°C)	SATURATION CURRENT (A) ※2		TEMPERATURE RISE CURRENT (A) ※3
				(at 20°C)	(at 100°C)	
CDEP147NP-0R5MC-125	0R5ML	0.5 μH ± 20%	1.18(0.98)	39.6(49.5)	33.9(42.4)	23.0
CDEP147NP-1R1MC-125	1R1ML	1.1 μH ± 20%	1.46(1.22)	26.4(33.0)	22.8(28.5)	21.5
CDEP147NP-2R0MC-125	2R0ML	2.0 μH ± 20%	2.02(1.69)	19.6(24.5)	16.8(21.0)	20.0
CDEP147NP-3R1MC-125	3R1ML	3.1 μH ± 20%	3.23(2.70)	16.0(20.0)	13.6(17.0)	17.5
CDEP147NP-4R5MC-125	4R5ML	4.5 μH ± 20%	4.97(4.14)	13.6(17.0)	11.6(14.5)	16.0
CDEP147NP-6R1MC-125	6R1ML	6.1 μH ± 20%	6.03(5.02)	11.6(14.5)	10.0(12.5)	12.5
CDEP147NP-8R0MC-125	8R0ML	8.0 μH ± 20%	7.80(6.50)	10.0(12.5)	8.2(10.3)	11.0
CDEP147NP-100MC-125	100ML	10.0 μH ± 20%	9.85(8.21)	9.2(11.5)	7.6(9.5)	10.0
CDEP147NP-120MC-125	120ML	12.0 μH ± 20%	13.31(11.1)	8.0(10.0)	6.6(8.2)	8.5

SMD Power Inductor CDEP147



Electrical Characteristics—standard type

PART NO.	STAMP	INDUCTANCE [WITHIN] ※1	D.C.R. (mΩ) [MAX.] (Typ.) (at 20°C)	SATURATION CURRENT (A) ※2		TEMPERATURE RISE CURRENT (A) ※3
				(at 20°C)	(at100°C)	
CDEP147NP-0R4NC-95	0R4NS	0.4 μ H ±25%	1.18(0.98)	52.8(66.0)	45.6(57.0)	23.0
CDEP147NP-0R9MC-95	0R9MS	0.9 μ H ±20%	1.46(1.22)	36.0(45.0)	30.8(38.5)	21.5
CDEP147NP-1R5MC-95	1R5MS	1.5 μ H ±20%	2.02(1.69)	27.2(34.0)	22.8(28.5)	20.0
CDEP147NP-2R4MC-95	2R4MS	2.4 μ H ±20%	3.23(2.70)	22.4(28.0)	19.2(24.0)	17.5
CDEP147NP-3R4MC-95	3R4MS	3.4 μ H ±20%	4.97(4.14)	18.4(23.0)	16.0(20.0)	16.0
CDEP147NP-4R7MC-95	4R7MS	4.7 μ H ±20%	6.03(5.02)	15.2(19.0)	14.2(17.8)	12.5
CDEP147NP-6R1MC-95	6R1MS	6.1 μ H ±20%	7.80(6.50)	14.8(18.5)	12.4(15.5)	11.0
CDEP147NP-7R7MC-95	7R7MS	7.7 μ H ±20%	9.85(8.21)	12.4(15.5)	10.6(13.2)	10.0
CDEP147NP-9R5MC-95	9R5MS	9.5 μ H ±20%	13.31(11.1)	11.2(14.0)	9.6(12.0)	8.5

Electrical Characteristics—high power type

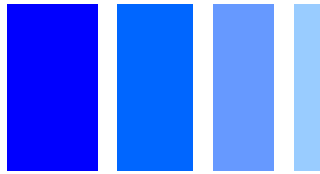
PART NO.	STAMP	INDUCTANCE [WITHIN] ※1	D.C.R. (mΩ) [MAX.] (Typ.) (at 20°C)	SATURATION CURRENT (A) ※2		TEMPERATURE RISE CURRENT (A) ※3
				(at 20°C)	(at100°C)	
CDEP147NP-0R3NC-73	0R3NH	0.3 μ H ±25%	1.18(0.98)	70.0(87.6)	59.8(74.8)	23.0
CDEP147NP-0R7MC-73	0R7MH	0.7 μ H ±20%	1.46(1.22)	46.4(58.0)	39.2(49.0)	21.5
CDEP147NP-1R2MC-73	1R2MH	1.2 μ H ±20%	2.02(1.69)	35.7(44.7)	30.0(37.5)	20.0
CDEP147NP-1R8MC-73	1R8MH	1.8 μ H ±20%	3.23(2.70)	29.6(37.0)	24.0(30.0)	17.5
CDEP147NP-2R6MC-73	2R6MH	2.6 μ H ±20%	4.97(4.14)	24.4(30.5)	20.4(25.5)	16.0
CDEP147NP-3R5MC-73	3R5MH	3.5 μ H ±20%	6.03(5.02)	20.8(26.0)	17.2(21.5)	12.5
CDEP147NP-4R7MC-73	4R7MH	4.7 μ H ±20%	7.80(6.50)	17.6(22.0)	16.0(20.0)	11.0
CDEP147NP-5R9MC-73	5R9MH	5.9 μ H ±20%	9.85(8.21)	16.4(20.5)	14.0(17.5)	10.0
CDEP147NP-7R3MC-73	7R3MH	7.3 μ H ±20%	13.31(11.1)	14.6(18.3)	12.2(15.3)	8.5

※1. Measuring condition: at 100kHz.

※2. Saturation current: The value of D.C. current when the inductance decreases to 75% of its nominal value.

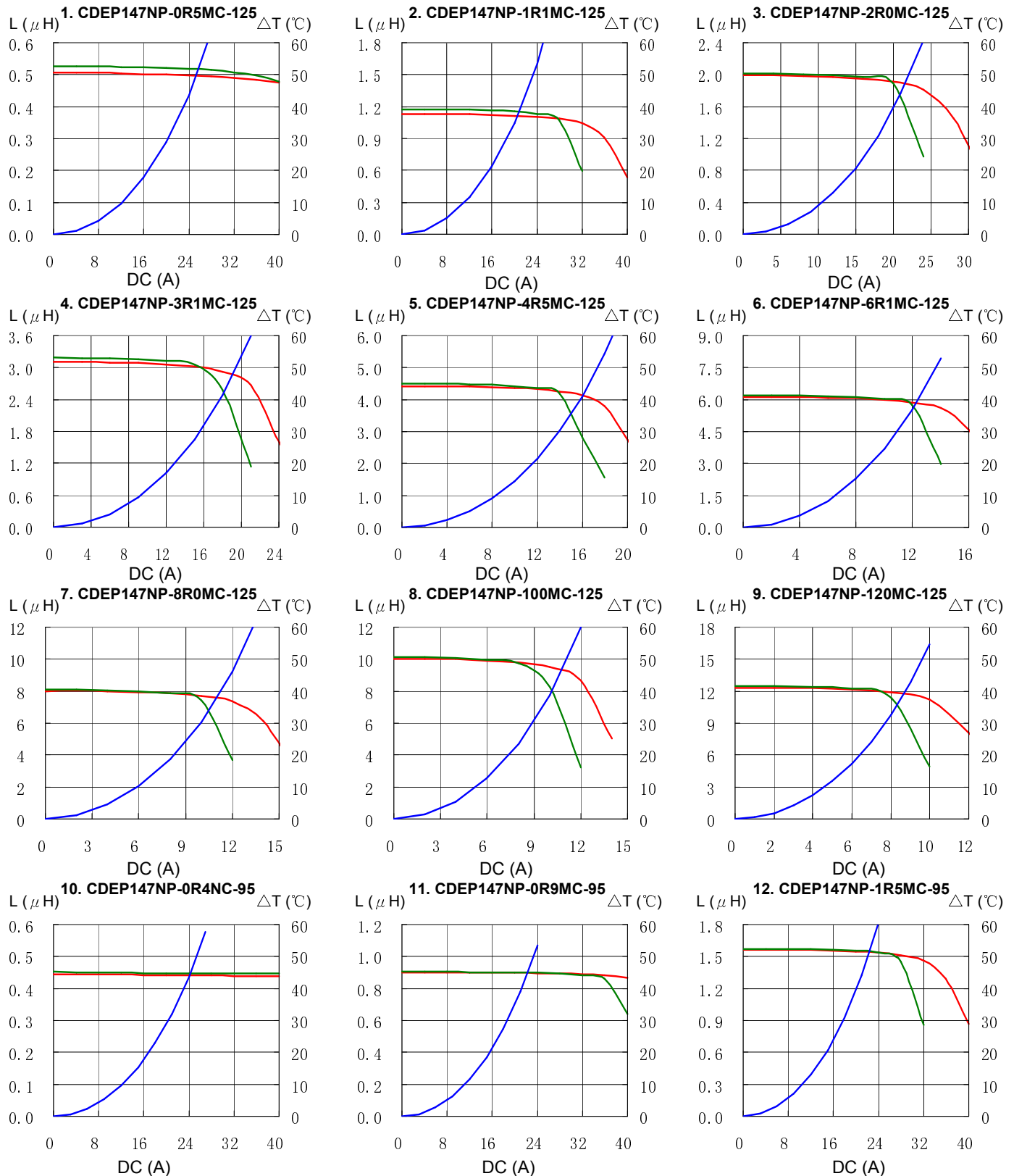
※3. Temperature rise current: The value of D.C. current when the temperature rise is $\Delta t=40^{\circ}\text{C}$ ($T_a=20^{\circ}\text{C}$).

SMD Power Inductor CDEP147



Saturation Current & Temperature Rise Graph

— L (20°C) — L (100°C) — ΔT

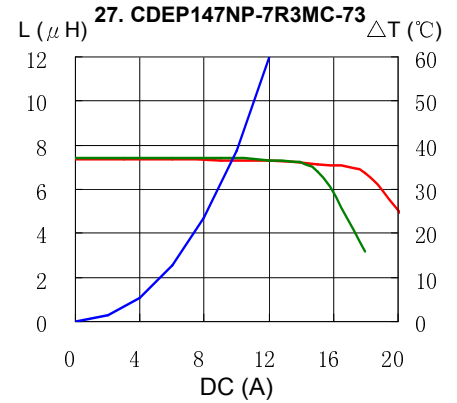
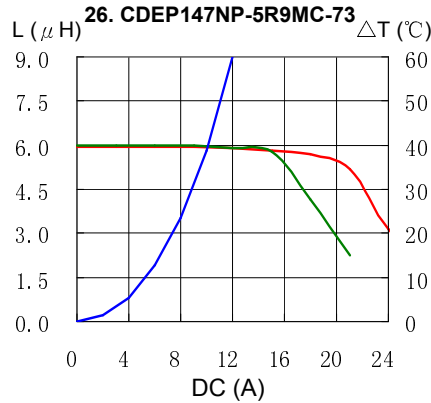
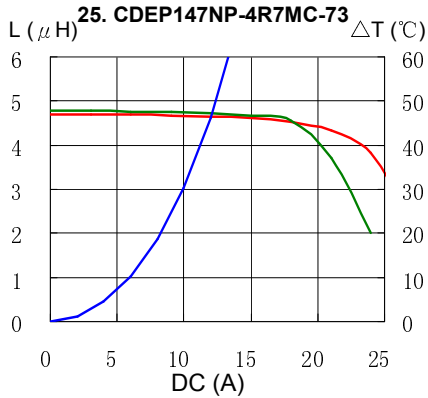


SMD Power Inductor CDEP147

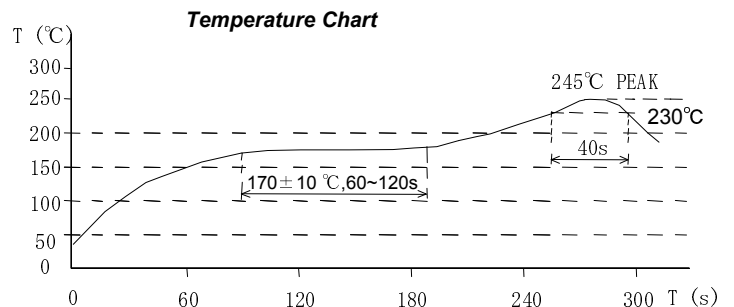
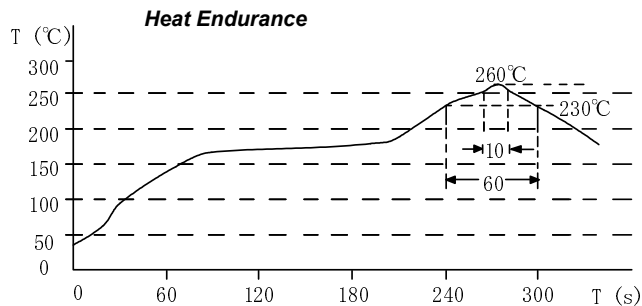


Saturation Current & Temperature Rise Graph

— L (20°C) — L (100°C) — ΔT



Solder Reflow Condition



Please refer to the sales offices on our website - <http://www.sumida.com>

Hong Kong
Tel.+852-2880-6781
FAX.+852-2565-9600
sales@hk.sumida.com

Saitama(Japan)
Tel.+81-48-691-7300
FAX.+81-48-691-7340
sales@jp.sumida.com

Chicago
Tel.+1-847-545-6700
FAX. +1-847-545-6720
sales@us.sumida.com

Shanghai
Tel.+86-21-5836-3299
FAX.+86-21-5836-3266
shanghai.sales@cn.sumida.com

Seoul
Tel.+82-2-6237-0777
FAX.+82-2-6237-0778
sales@kr.sumida.com

Oberzell
Tel.+49-8591-937-0
FAX. +49-8591-937-103
contact@eu.sumida.com

Shenzhen
Tel.+86-755-8291-0228
FAX.+86-755-8291-0338
shenzhen.sales@cn.sumida.com

Singapore
Tel.+65-6296-3388
FAX.+65-6841-4426
sales@sg.sumida.com

Neumarkt
Tel.+49-9181-4509-110
FAX. +49-9181-4509-310
infocomp@eu.sumida.com

Taipei
Tel.+886-2-8751-2737
FAX.+886-2-8751-2738
sales@tw.sumida.com

San Jose
Tel.+1-408-321-9660
FAX.+1-408-321-9308
sales@us.sumida.com