

Marshalling patchboard - PTMC 1,5/32-2H VDE0815 19Z



3270395

<https://www.phoenixcontact.com/us/products/3270395>

Please be informed that the data shown in this PDF document is generated from our Online Catalog. Please find the complete data in the user documentation. Our General Terms of Use for Downloads are valid.



Marshalling patchboard, Labeled from 1 - 32, nom. voltage: 500 V, nominal current: 17.5 A, connection method: Push-in connection, cross section: 0.14 mm² - 2.5 mm², mounting: Wall mounting, 19" rack, color: gray

Your advantages

- Tool-free wiring in a confined space thanks to compact size
- Clear representation of actuation and terminal points through vertical conductor routing
- High contact quality thanks to push-in technology as a replacement for Wire-Wrap®, TERMI-POINT®, etc.
- Color configuration according to VDE 0815
- For mounting in 19" racks

Marshalling patchboard - PTMC 1,5/32-2H VDE0815 19Z



3270395

<https://www.phoenixcontact.com/us/products/3270395>

Commercial Data

Item number	3270395
Packing unit	24 pc
Minimum order quantity	1 pc
Note	Made to Order (non-returnable)
Product Key	BE6212
Catalog Page	Page 65 (C-1-2019)
GTIN	4055626282558
Weight per Piece (including packing)	111 g
Weight per Piece (excluding packing)	111 g
Customs tariff number	85369010
Country of origin	PL

Marshalling patchboard - PTMC 1,5/32-2H VDE0815 19Z



3270395

<https://www.phoenixcontact.com/us/products/3270395>

Technical Data

Notes

General	Labeled from 1 - 32
---------	---------------------

Product properties

Product type	Marshalling terminal
Number of positions	32
Number of connections	128
Number of rows	1

Insulation characteristics

Overvoltage category	III
Degree of pollution	3

Electrical properties

Rated surge voltage	6 kV
Maximum power dissipation for nominal condition	0.56 W

Connection data

Number of connections per level	128
Nominal cross section	1.5 mm ²
Rated cross section AWG	14
Stripping length	8 mm ... 10 mm
Internal cylindrical gage	A1
Conductor cross section solid	0.14 mm ² ... 2.5 mm ²
Cross section AWG	26 ... 14
Conductor cross section flexible	0.14 mm ² ... 1.5 mm ²
Conductor cross section, flexible [AWG]	26 ... 14
Flexible conductor cross section flexible (ferrule, w/o plastic sleeve)	0.14 mm ² ... 1.5 mm ²
Flexible conductor cross section (ferrule with plastic sleeve)	0.14 mm ² ... 1.5 mm ²
Nominal current	17.5 A
Maximum load current	24 A (in case of a 2.5 mm ² conductor cross section, the maximum load current must not be exceeded by the total current of all connected conductors.) 12 A (in case of a 2.5 mm ² conductor cross section, the maximum load current must not be exceeded by the total current of all connected conductors.)
Nominal voltage	500 V

Connection cross sections directly pluggable

Conductor cross section solid	0.34 mm ² ... 2.5 mm ²
Conductor cross section, solid [AWG]	20 ... 14
Flexible conductor cross section flexible (ferrule, w/o plastic sleeve)	0.34 mm ² ... 1.5 mm ²

Marshalling patchboard - PTMC 1,5/32-2H VDE0815 19Z



3270395

<https://www.phoenixcontact.com/us/products/3270395>

Flexible conductor cross section (ferrule with plastic sleeve)	0.34 mm ² ... 1.5 mm ²
--	--

Dimensions

Dimensional drawing	
Width	34.4 mm
Height	30 mm
Length	111 mm

Material specifications

Color	gray
Flammability rating according to UL 94	V0
Insulating material group	I
Insulating material	PA
Static insulating material application in cold	-60 °C
Temperature index of insulation material (DIN EN 60216-1 (VDE 0304-21))	125 °C
Relative insulation material temperature index (Elec., UL 746 B)	130 °C
Fire protection for rail vehicles (DIN EN 45545-2) R22	HL 1 - HL 3
Fire protection for rail vehicles (DIN EN 45545-2) R23	HL 1 - HL 3
Fire protection for rail vehicles (DIN EN 45545-2) R24	HL 1 - HL 3
Fire protection for rail vehicles (DIN EN 45545-2) R26	HL 1 - HL 3
Calorimetric heat release NFPA 130 (ASTM E 1354)	27,5 MJ/kg
Surface flammability NFPA 130 (ASTM E 162)	passed
Specific optical density of smoke NFPA 130 (ASTM E 662)	passed
Smoke gas toxicity NFPA 130 (SMP 800C)	passed

Connector

Number of positions	32
Number of positions	32

Electrical tests

Surge voltage test

Test voltage setpoint	7.3 kV
Result	Test passed

Temperature-rise test

Requirement temperature-rise test	Increase in temperature ≤ 45 K
-----------------------------------	--------------------------------

Marshalling patchboard - PTMC 1,5/32-2H VDE0815 19Z



3270395

<https://www.phoenixcontact.com/us/products/3270395>

Result	Test passed
Short-time withstand current 1.5 mm ²	0.18 kA
Short-time withstand current 2.5 mm ²	0.3 kA
Result	Test passed

Power-frequency withstand voltage

Test voltage setpoint	1.89 kV
Result	Test passed

Mechanical properties

Mechanical data

Open side panel	No
-----------------	----

Mechanical tests

Mechanical strength

Result	Test passed
--------	-------------

Attachment on the carrier

DIN rail/fixing support	NS 35
Test force setpoint	1 N
Result	Test passed

Test for conductor damage and slackening

Rotation speed	10 rpm
Revolutions	135
Conductor cross section/weight	0.14 mm ² / 0.2 kg
	1.5 mm ² / 0.4 kg
	2.5 mm ² / 0.7 kg
Result	Test passed

Environmental and real-life conditions

Aging

Temperature cycles	192
Result	Test passed

Needle-flame test

Time of exposure	30 s
Result	Test passed

Oscillation/broadband noise

Specification	DIN EN 50155 (VDE 0115-200):2008-03
Spectrum	Service life test category 1, class B, body mounted
Frequency	f ₁ = 5 Hz to f ₂ = 150 Hz
ASD level	0.964 (m/s ²)/Hz
Acceleration	0.58g

Marshalling patchboard - PTMC 1,5/32-2H VDE0815 19Z



3270395

<https://www.phoenixcontact.com/us/products/3270395>

Test duration per axis	5 h
Test directions	X-, Y- and Z-axis
Result	Test passed

Shocks

Specification	DIN EN 50155 (VDE 0115-200):2008-03
Pulse shape	Half-sine
Acceleration	5g
Shock duration	30 ms
Number of shocks per direction	3
Test directions	X-, Y- and Z-axis (pos. and neg.)
Result	Test passed

Ambient conditions

Ambient temperature (operation)	-60 °C ... 105 °C (max. short-term operating temperature RTI Elec.)
Ambient temperature (storage/transport)	-25 °C ... 60 °C (for a short time, not exceeding 24 h, -60 °C to +70 °C)
Ambient temperature (assembly)	-5 °C ... 70 °C
Ambient temperature (actuation)	-5 °C ... 70 °C ()
Permissible humidity (storage/transport)	30 % ... 70 %

Standards and regulations

Connection in acc. with standard	IEC 60947-7-1
----------------------------------	---------------

Mounting

Mounting type	Wall mounting
	19" rack

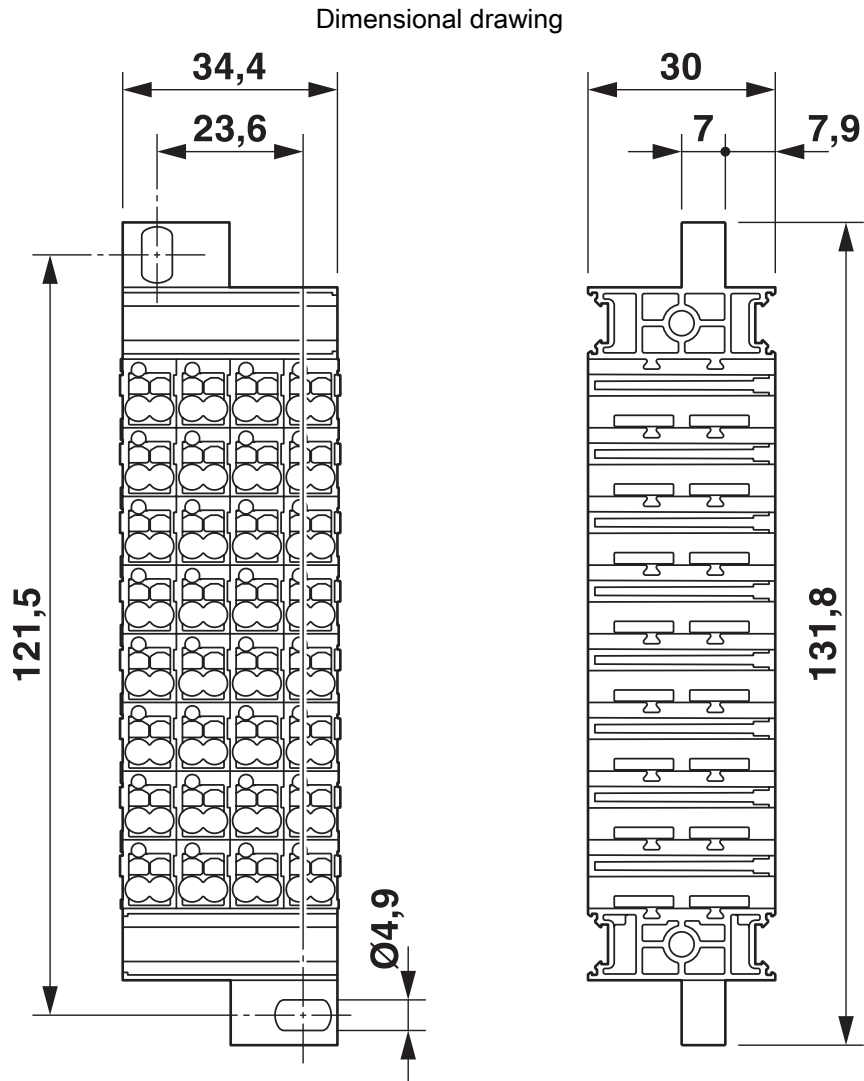
Marshalling patchboard - PTMC 1,5/32-2H VDE0815 19Z



3270395

<https://www.phoenixcontact.com/us/products/3270395>

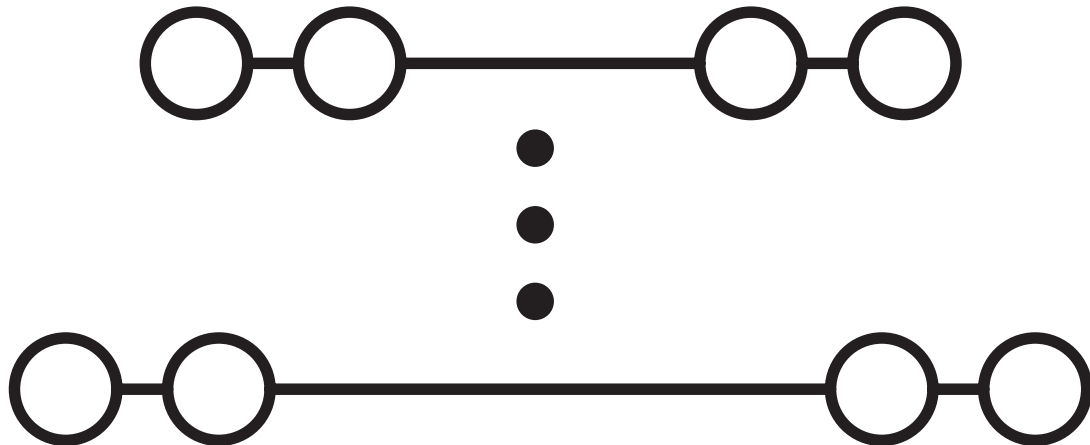
Drawings



3270395

<https://www.phoenixcontact.com/us/products/3270395>

Circuit diagram



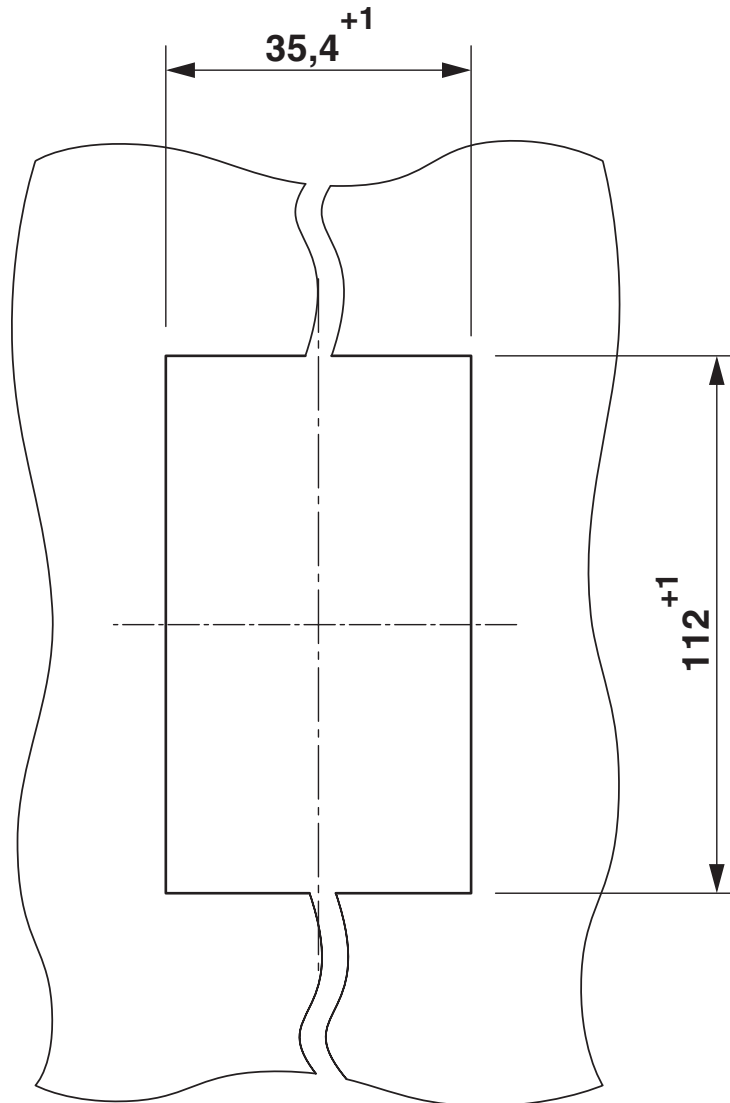
Marshalling patchboard - PTMC 1,5/32-2H VDE0815 19Z



3270395

<https://www.phoenixcontact.com/us/products/3270395>

Dimensional drawing



Panel cutout

Marshalling patchboard - PTMC 1,5/32-2H VDE0815 19Z



3270395

<https://www.phoenixcontact.com/us/products/3270395>

Approvals



EAC

Approval ID: RU C-DE.BL08.B.00682

Marshalling patchboard - PTMC 1,5/32-2H VDE0815 19Z



3270395

<https://www.phoenixcontact.com/us/products/3270395>

Classifications

ECLASS

ECLASS-9.0	27141120
ECLASS-10.0.1	27141120
ECLASS-11.0	27141120

ETIM

ETIM 8.0	EC000897
----------	----------

UNSPSC

UNSPSC 21.0	39121400
-------------	----------

Marshalling patchboard - PTMC 1,5/32-2H VDE0815 19Z



3270395

<https://www.phoenixcontact.com/us/products/3270395>

Environmental Product Compliance

China RoHS	Environmentally friendly use period: unlimited = EFUP-e
	No hazardous substances above threshold values

Marshalling patchboard - PTMC 1,5/32-2H VDE0815 19Z



3270395

<https://www.phoenixcontact.com/us/products/3270395>

Accessories



Note: Applying some accessories below might limit this product.

Actuation tool

Actuation tool - ST-BW 0 - 1200135

<https://www.phoenixcontact.com/us/products/1200135>



Actuation tool, for all 1.5 mm² spring cages from PT 1,5/S and FT 1,5/S

Screwdriver

Screwdriver - SZF 0-0,4X2,5 - 1204504

<https://www.phoenixcontact.com/us/products/1204504>



Actuation tool, for ST terminal blocks, also suitable for use as a bladed screwdriver, size: 0.4 x 2.5 x 75 mm, 2-component grip, with non-slip grip

Marshalling patchboard - PTMC 1,5/32-2H VDE0815 19Z

3270395

<https://www.phoenixcontact.com/us/products/3270395>

Reducing plug

Reducing plug - RPS - 0201647

<https://www.phoenixcontact.com/us/products/0201647>



Reducing plug, color: gray


Wire bridge

Wire bridge - DB 50- 90 BU - 2821180

<https://www.phoenixcontact.com/us/products/2821180>

Flexible wire loop bridge, 50-pos., conductor cross-section: 0.5 mm², loop length:
90 mm, ferrule length: 8 mm, color: blue



 Max. current carrying capacity: 8 A

Marshalling patchboard - PTMC 1,5/32-2H VDE0815 19Z

3270395

<https://www.phoenixcontact.com/us/products/3270395>

Wire bridge

Wire bridge - DB 50- 90 BK - 2820916

<https://www.phoenixcontact.com/us/products/2820916>

Flexible wire loop bridge, 50-pos., conductor cross-section: 0.5 mm², loop length: 90 mm, ferrule length: 8 mm, color: black



 Max. current carrying capacity: 8 A

Wire bridge

Wire bridge - DB 50- 90 GY - 2820929

<https://www.phoenixcontact.com/us/products/2820929>

Flexible wire loop bridge, 50-pos., conductor cross-section: 0.5 mm², loop length: 90 mm, ferrule length: 8 mm, color: gray



 Max. current carrying capacity: 8 A

Marshalling patchboard - PTMC 1,5/32-2H VDE0815 19Z



3270395

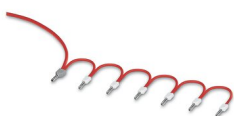
<https://www.phoenixcontact.com/us/products/3270395>

Wire bridge

Wire bridge - DB 50- 90 RD - 2864639

<https://www.phoenixcontact.com/us/products/2864639>

Flexible wire loop bridge, 50-pos., conductor cross-section: 0.5 mm², loop length:
90 mm, ferrule length: 8 mm, color: red



 Max. current carrying capacity: 8 A

Insulating sleeve

Insulating sleeve - MPS-IH WH - 0201663

<https://www.phoenixcontact.com/us/products/0201663>

Insulating sleeve, color: white



Marshalling patchboard - PTMC 1,5/32-2H VDE0815 19Z



3270395

<https://www.phoenixcontact.com/us/products/3270395>

Insulating sleeve

Insulating sleeve - MPS-IH RD - 0201676

<https://www.phoenixcontact.com/us/products/0201676>

Insulating sleeve, color: red

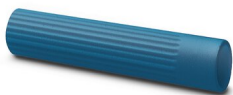


Insulating sleeve

Insulating sleeve - MPS-IH BU - 0201689

<https://www.phoenixcontact.com/us/products/0201689>

Insulating sleeve, color: blue



Marshalling patchboard - PTMC 1,5/32-2H VDE0815 19Z



3270395

<https://www.phoenixcontact.com/us/products/3270395>

Insulating sleeve

Insulating sleeve - MPS-IH YE - 0201692

<https://www.phoenixcontact.com/us/products/0201692>

Insulating sleeve, color: yellow



Insulating sleeve

Insulating sleeve - MPS-IH GN - 0201702

<https://www.phoenixcontact.com/us/products/0201702>

Insulating sleeve, color: green



Marshalling patchboard - PTMC 1,5/32-2H VDE0815 19Z

3270395

<https://www.phoenixcontact.com/us/products/3270395>

Insulating sleeve

Insulating sleeve - MPS-IH GY - 0201728

<https://www.phoenixcontact.com/us/products/0201728>

Insulating sleeve, color: gray



Insulating sleeve

Insulating sleeve - MPS-IH BK - 0201731

<https://www.phoenixcontact.com/us/products/0201731>

Insulating sleeve, color: black



Marshalling patchboard - PTMC 1,5/32-2H VDE0815 19Z



3270395

<https://www.phoenixcontact.com/us/products/3270395>

Test plugs

Test plugs - MPS-MT - 0201744

<https://www.phoenixcontact.com/us/products/0201744>



Test plugs, with solder connection up to 1 mm² conductor cross section, color:
gray

Phoenix Contact 2022 © - all rights reserved

<https://www.phoenixcontact.com>

Phoenix Contact USA
586 Fulling Mill Road
Middletown, PA 17057, United States
(+717) 944-1300
info@phoenixcon.com