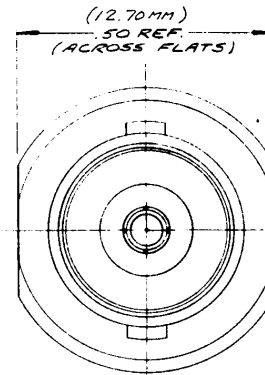
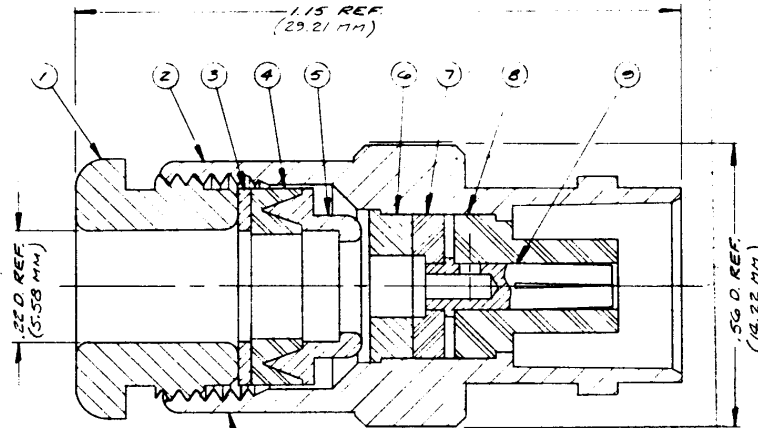


DASH NO. M CODE MADE FROM



STAMP 91836 M39012/17-0101
KC-39-03 XXXX

DATE CODE

NOTES:

1. FOR USE WITH RG-58, 141, 142, 223 & 400/U CABLE
2. FOR CABLING INSTRUCTIONS SEE CP-1050.

UNLESS OTHERWISE SPECIFIED:

- | | |
|---|---|
| <ol style="list-style-type: none"> 1. TOLERANCES: FRACTIONS & 2 PLACE DECIMALS ± .010 3 PLACE DECIMALS & .004 T. I. R. CONCENTRICITY OF ANY 2 DIAMETERS MAY NOT EXCEED HALF THE SUM OF THEIR TOLERANCES. | <ol style="list-style-type: none"> 2. REMOVE ALL BURRS. BREAK SHARP EDGES .005 MAX. 3. NO FILLETS PERMITTED. 4. SURFACE ROUGHNESS 63 MICROINCHES RMS MAX. 5. ALL DIMENSIONS PRIOR TO PLATING. |
|---|---|

REVISIONS

ISSUE	CHANGES
4	CN 18666 B MJB 11 SEP 78
5	CN 23169 E GL 16 APR 82
6	CN 32278 A LNM 13 JUN 90

M39012/17-0101 (SHEET 1 OF 2)

S-D

S-D

SCALE 5:1

KC-39-03

USED ON

REF.

FINISH

SPEC KER 1000A

MATL.

SPEC.

BNC JACK

DRAWN MJB DATE 11 SEP 78

APPR DATE

KINGS ELECTRONICS
40 MARLBOROUGH ROAD
TUCKAHOE, N. Y. 10787

S-D

M39012/17-0101

(SHEET 1 OF 2)