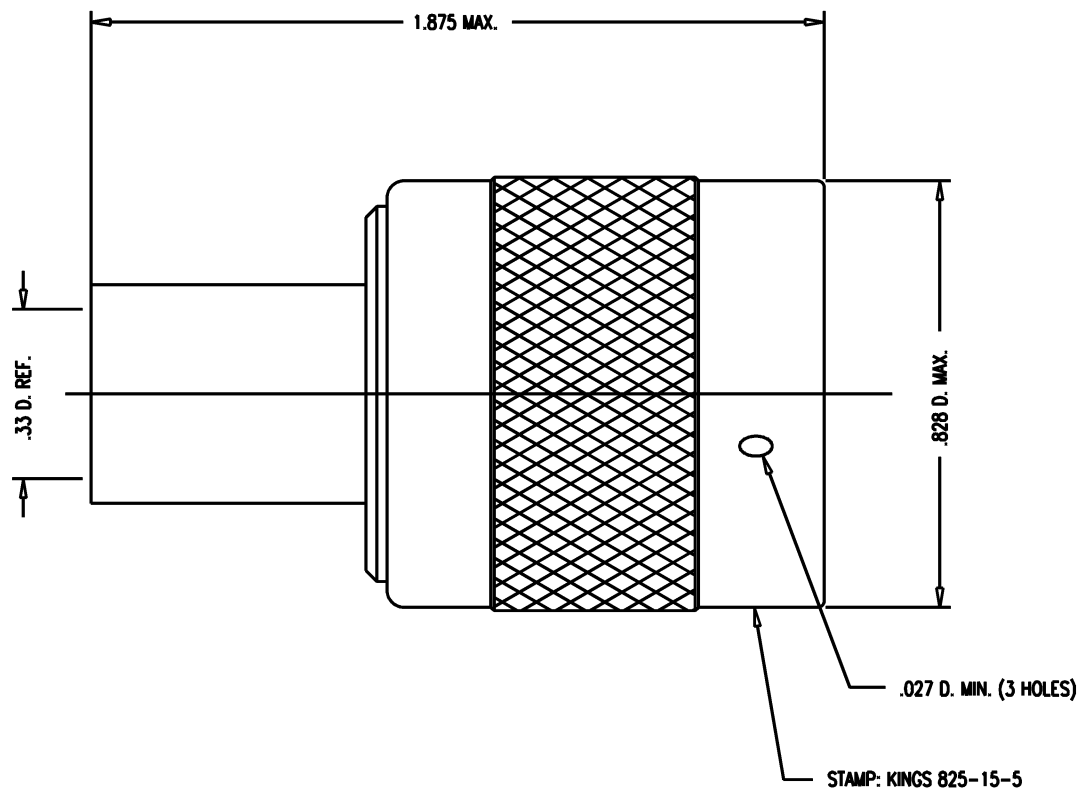


GSD

825-15-5



- NOTES:**
1. FOR USE WITH MCDONNELL DOUGLAS ST5M1398-001, 002 & .003 CABLE.
 2. FOR CABLING INSTRUCTIONS SEE 3-597.
 3. FOR CABLE TRIMMING USE KTJ-188, KTD-230 & KTF-5.
 4. FOR CRIMPING USE DIE KTH-2005.
 5. INTERFACE PER MIL-STD-348, FIG. 309-1.
 6. MARK PACKAGE: KINGS 825-15-5
MDAE 5M1986-001
 7. MATERIALS:
INSULATOR: TEFLON, ASTM-D-4894
GASKET: SIL. RUB., ZZ-R-765
K-GRIP SLEEVE: COM. BRONZE, ASTM-B-135
C-RING: PHOS. BRONZE, ASTM-B-103
OUTER CONTACT: BER. COP., ASTM-B-196
ALL OTHER PARTS: BRASS, ASTM-B16
 8. FINISHES:
ALL METAL PARTS: SILVER PLATE PER QQ-S-365
 9. ELECTRICAL CHARACTERISTICS:
NOMINAL IMPEDANCE: 50 OHMS
VOLTAGE RATING: 1500 VRMS
FREQUENCY RANGE: DC TO 11 GHz

REVISIONS

ISSUE	CHANGES
0	ER 35589 KH 02/06/95

KAM5273

SCALE 4:1

APPROX SURFACE AREA

SUPERSIDES 825-1-5-MC7

USED ON

REF: MCDONNELL AIRCRAFT /5M1986-001 REV. B

PLUG, SC

DRAWN KH 02/06/95

DESIGN LI 02/07/95

APPR. DATE

KINGS
ELECTRONICS CO., INC.
TUCKAHOE, NEW YORK 10707

825-15-5

GSD