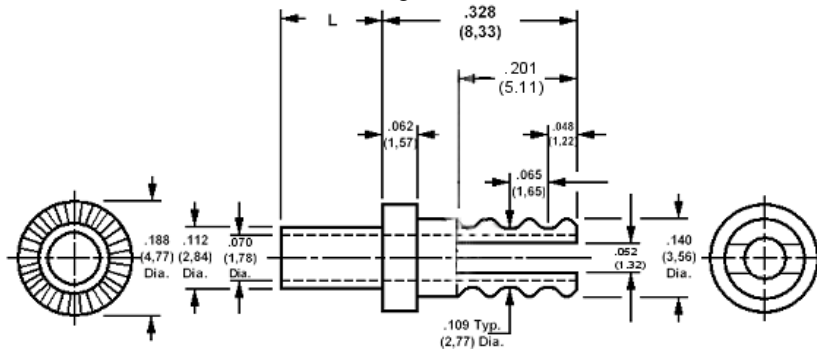


140-1027 Solder terminal, turreted, thru hole, slotted

Recommended mounting hole .116 (2,95), #32 drill



How to order code

140-1027-XX-YY-00

Basic Part No XX = L dimension, YY = Plating Finish

DIMENSIONS (XX)			
Basic Part No		L	Board Thickness
140-1027	-01	.075 (1,91)	.031 (0,79)
	-02	.105 (2,67)	.062 (1,59)
	-03	.135 (3,43)	.094 (2,38)
	-04	.165 (4,19)	.125 (3,18)

MATERIALS			
Component	Material	Finish (YY)	
		-01	-05
Terminal	Brass	Silver	Electro Solder

SWAGE TOOLING	
Recommended Swaging Tools:-	
Anvil	435-6445-01-00-00
Roll punch	435-6604-02-00-00
Flare Punch	435-6663-01-00-00