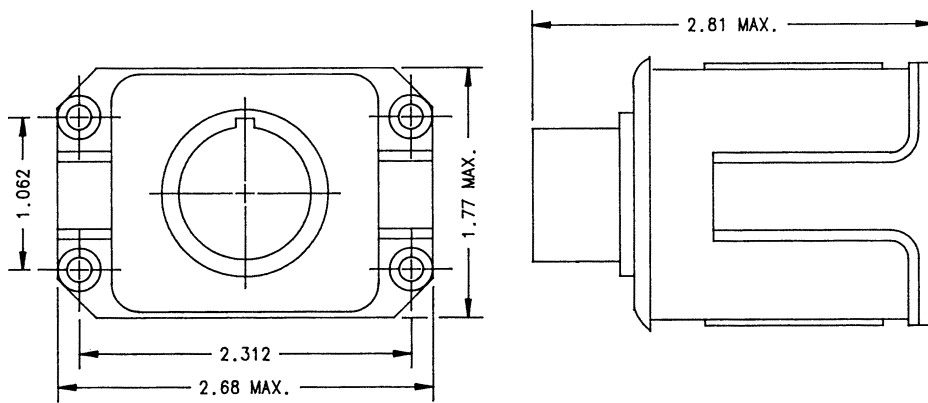


CH-26 SPST, 1 Amp, 28 VDC

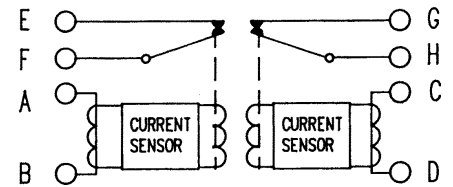
Features:

- Two Separate Sensors in One Package
- SPST Main Contacts
- Current Operated
- Hermetically Sealed
- 28 VDC
- 1 Amp
- High Reliability
- Meets many requirements of MIL-R-6106



Dimensions for this product are expressed in inches. Multiply values by 25.4 for millimeters.

CONTACTOR CONFIGURATION



Notes:

PRODUCT SPECIFICATIONS

Specification for Complete Unit	Two Relays Packaged
Construction	Metal Case, Potted Assembly with Contacts Hermetically Sealed
Coil Data Duty Cycle	Continuous (Each Relay)
Minimum Operating Cycles	50,000 (Each Relay)
Environmental Data:	
Operating Temperature	-55°C to +71°C
Vibration	20 G to 2000 Hz
Weight Maximum	8 Oz.
Specifications for Each Relay	Both Relays the Same
Contact Data:	
Contacts	SPST
Contact Rating	1 Amp at 28 VDC Lamp Load
Coil Data:	
Pick-Up	0.75 Amp Maximum, 400 Hz
Drop-Out	0.10 Amp Minimum, 400 Hz
Operating Current:	
In-Rush Maximum	Continuous Operating Current of 7.5 Amps Max, 400 Hz 37.5 Amps, 400 Hz

For factory-direct application assistance, contact the HARTMAN product team at (419) 521-9500, Fax (419) 526-2749.

© 2004 by Tyco Electronics Corporation. All Rights Reserved. HARTMAN and TYCO are trademarks.