



RKT-3590

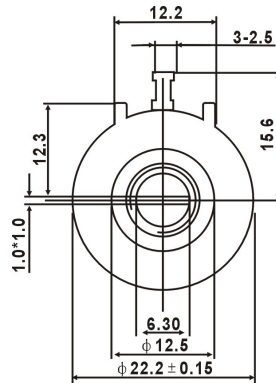
PRECISION MULTITURN WIREWOUND POTENTIOMETER

FEATURES

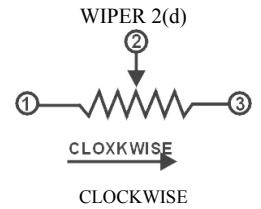
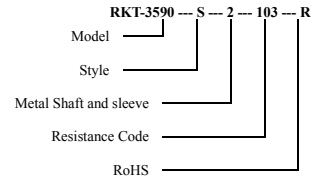
- Multiturn/ Round/ Wirewound
- 2 Shaft Styles

Electrical Characteristics	
Standard Resistance Range	1KΩ - 100KΩ
Resistance Tolerance	±5%
Independent Linearity	±0.5%
Effective Electrical Travel	≥3600° ± 10°
Treninal Resistance	≤2%R or 5Ω (whichever is larger)
Noise	≤3% R or 5Ω (whichever is larger)
Insulation Resistance	R≥1GΩ
Withstand Voltage	101.3kPa710V, 8.5kPa470V

Common Dimensions

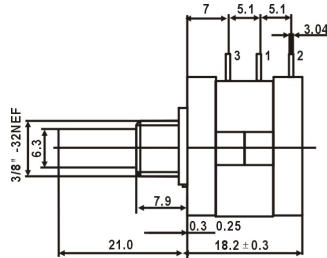


How to Order



Tolerance is ±0.25 if no identification

Environmental Characteristics	
Power Rating (500volts max)	2W@+70°C, 0W@+125°C
Temperature Range	-55°C ~ +125°C
Temperature Coefficient	≤±50×10 ⁻⁶ /°C (-55°C ~ +125°C)
Temperature Variation	ΔR≤±2%R. Δ(Uab/Uac)≤±1%
Collision	390m/s ² , 4000cycles, R≤1%R
Vibration	10-500Hz, 0.75mm, or 98m/s ² , 6h ΔR≤±1%R. Δ(Uab/Uac)≤±2%
Climate Category	ΔR≤±3%R. R _i ≥100MΩ
Electrical Endurance at 70°C	2W, 1000h, ΔR≤±3%R
Mechanical Endurance	10000 cycles, ΔR≤±3%R
Steady damp-heat	ΔR≤±3%R, R _i ≥100MΩ



Resistance Table

Resistance(Ohms)	Resistance Code
1,000	102
2,000	202
5,000	502
10,000	103
20,000	203
50,000	503
100,000	104

Special resistances available.

Physical Characteristics	
Total Mechanical Travel	≥3600° ± 10°
Staring Torque	≤36mN·m
Clutch Torque	≥300mN·m
Standard Packaging	20pcs/box or 25pcs/box

Note: Specification are subject to change without notice.