



Data Sheet


 telephone
 949 252 0522


BACK

Product Category: RF SAW Filter

Part Number	Package	Application	Last Modified
861-RF1960.0M-B	2.5 x 2.0 SMD	US-PCS Rx	Mar. 14, 2007

TYPE :

US-PCS Rx, Balanced RF SAW Filter

PART NUMBER :

861-RF1960.0M-B

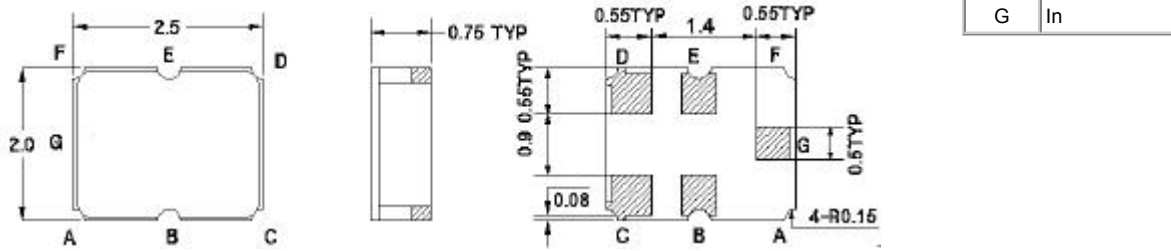
OPERATING CONDITIONS / ELECTRICAL CHARACTERISTICS

PARAMETERS	Condition	Minimum	Typical	Maximum	Units
Center Frequency (Fo)	-	-	1960.0	-	MHz
Maximum Insertion Loss	1930.0~ 1990.0 MHz	-	3.3	4.0	dB
Attenuation:	D.C.~ 1000.0 MHz	45	55	-	dB
	1000.0~1830.0 MHz	25	30	-	
	1830.0~ 1900.0MHz	15	25	-	
	1900.0~ 1910.0 MHz	7	15	-	
	2010.0~ 2030.0 MHz	5	7.5	-	
	2030.0~ 2070.0 MHz	12	17	-	
	2070.0~ 2310.0 MHz	20	22	-	
	2310.0~ 2380.0 MHz	33	36	-	
	2380.0~ 4600.0 MHz	30	44	-	
4600.0~ 6000.0 MHz	23	50	-		
Source Impedance (single ended)*	-	-	50	-	ohm
Load Impedance (Balanced ended)*	-	-	200//3.3nH	-	ohm
Input VSWR	1930.0~ 1990.0 MHz	-	1.7	2.4	-
Output VSWR	1930.0~ 1990.0 MHz	-	2.0	2.4	-
Amplitude Ripple	1930.0~ 1990.0 MHz	-	0.7	2.4	dBp-p
Maximum DC Voltage	-	-	-	5	V
Maximum Input Power	-	-	-	12	dBm
Operating Temperature	-	-30	-	+85	°C
Symmetry in Band	1930.0~ 1990.0 MHz	-			
Output Amplitude Balance (I S31/S21 I)	-	-2.2	0	2.2	dB
Output Phase Balance ($\phi(S31)-\phi(S21)+180^\circ$)	-	-15	0	15	degree

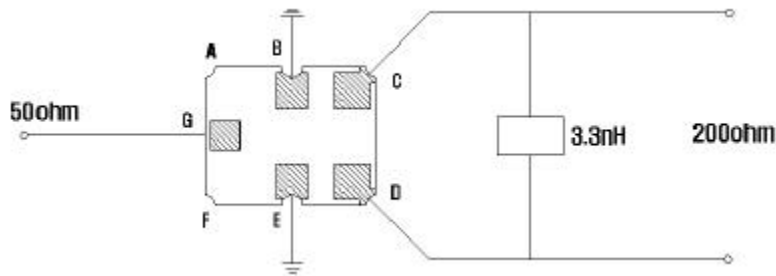
*With Matching Network

PACKAGE OUTLINE (mm)

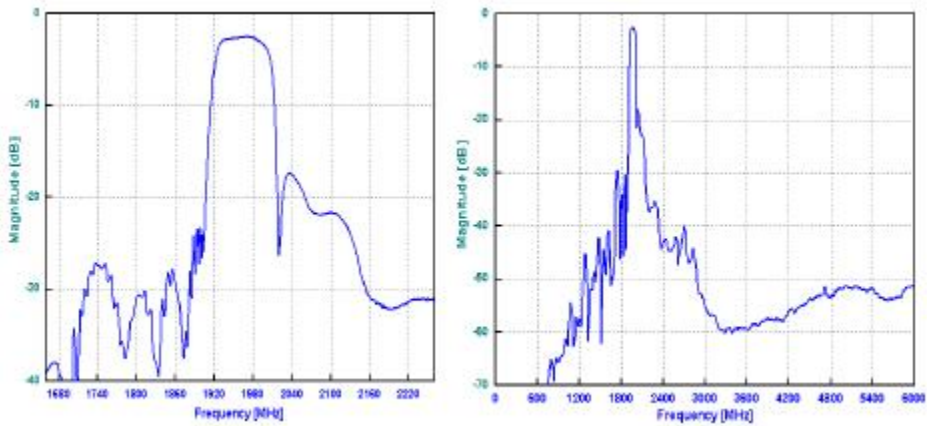
PIN LAYOUT	
A	-
B	Ground
C	Out
D	Out
E	Ground
F	-



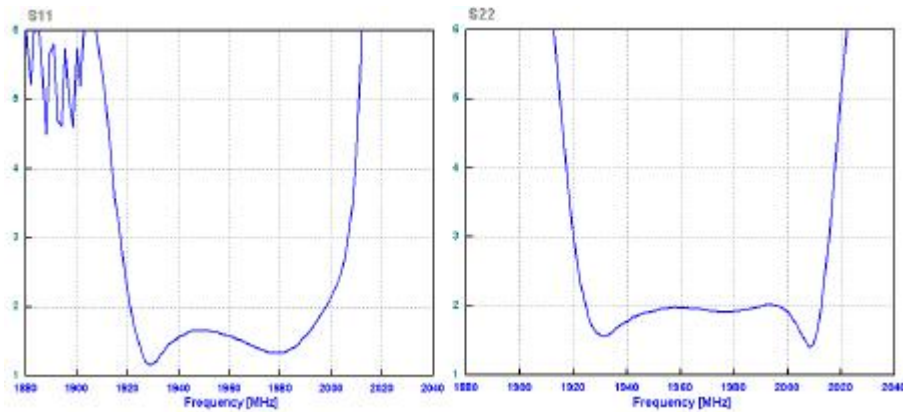
TEST FIXTURE



FREQUENCY RESPONSE

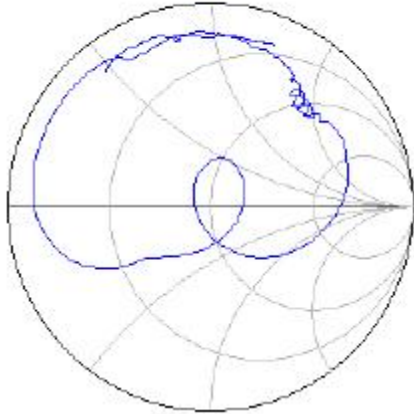


VSWR

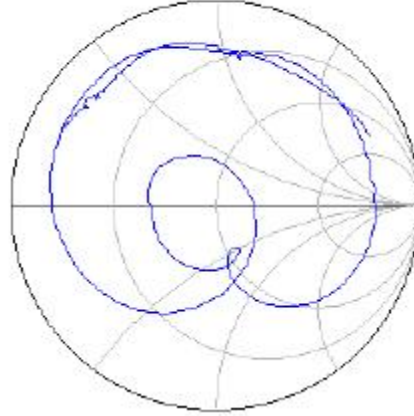


SMITH CHART

S11



S22



Oscilent Corporation - CALL **949.252.0522**

18195 East McDermott Street , Building D , Irvine , CA 92614 , USA

Fax: 949.252.0599 , E-Mail: Sales@Oscilent.com

Part No.: 861-RF1960M-B