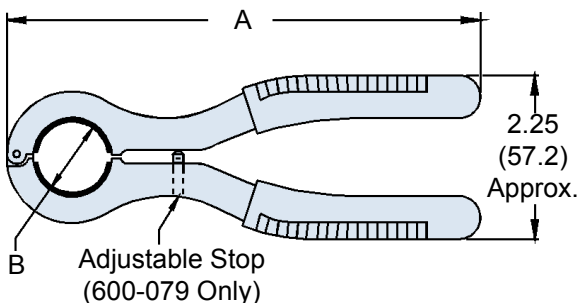
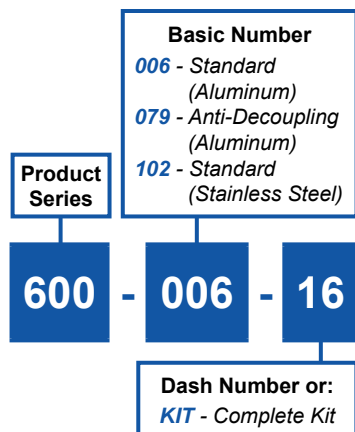


600-006, 600-079 & 600-102 Circular Backshell Assembly Wrenches and Replacement Insert Pads



APPLICATION NOTES

- Grips are covered in vinyl.
- Metric dimensions (mm) are indicated in parentheses.

600-006 and 600-102 (Standard Coupling)

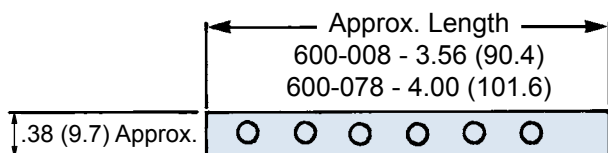
| Dash No. | Shell Size Ref. | A Ref. | B Ref. |
|----------|-----------------|--------------|--------------|
| 08 | 08/09 | 6.50 (165.1) | .617 (15.7) |
| 10 | 10/11 | 6.50 (165.1) | .734 (18.6) |
| 12 | 12/13 | 6.50 (165.1) | .858 (21.8) |
| 14 | 14/15 | 6.50 (165.1) | .984 (25.0) |
| 16 | 16/17 | 6.50 (165.1) | 1.112 (28.2) |
| 18 | 18/19 | 7.00 (177.8) | 1.198 (30.4) |
| 20 | 20/21 | 7.00 (177.8) | 1.323 (33.6) |
| 22 | 22/23 | 7.00 (177.8) | 1.448 (36.8) |
| 24 | 24/25 | 7.00 (177.8) | 1.573 (40.0) |
| 28 | 28 | 7.00 (177.8) | 1.969 (50.0) |

600-079 and 600-103 (Anti-Decoupling)

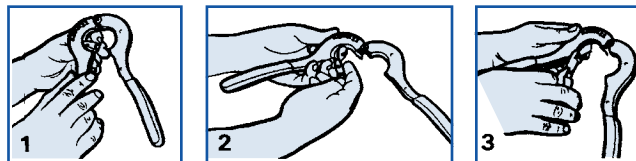
| Dash No. | Shell Size Ref. | A Ref. | B Ref. |
|----------|-----------------|--------------|--------------|
| 01 | 08/09 | 7.38 (187.5) | .659 (16.7) |
| 02 | 10/11 | 7.50 (190.5) | .783 (19.9) |
| 03 | 12/13 | 7.50 (190.5) | .906 (23.0) |
| 04 | 14/15 | 7.50 (190.5) | 1.035 (26.3) |
| 05 | 16/17 | 7.50 (190.5) | 1.140 (29.0) |
| 06 | 18/19 | 7.75 (196.9) | 1.260 (32.0) |
| 07 | 20/21 | 8.00 (203.2) | 1.383 (35.1) |
| 08 | 22/23 | 8.25 (209.6) | 1.510 (38.4) |
| 10 | 24/25 | 8.25 (209.6) | 1.630 (41.4) |

Consult Factory for Larger Sizes

Replacement Insert Pads



- 600-008 Fits standard coupling series sizes 08 through 24, color black.
- 600-078-01 Fits anti-decoupling coupling sizes 09 through 23, color red.
- 600-078-02 Fits anti-decoupling coupling size 25, color red.



Replacing Insert Pads in Backshell Assembly Tools

- The urethane pad strips are mechanically retained without adhesive. To remove, grasp an edge of the strip and pull loose from tool.
- Beginning with retaining hole adjacent to assembly tool hinge, insert first retaining knob on strip into hole. Continue inserting knobs on pad strip into remaining holes on tool.
- Using side-cutters or scissors, trim end of pad strip flush with metal surface of assembly tool. Retain remainder of strip for replacement in other size assembly tools.