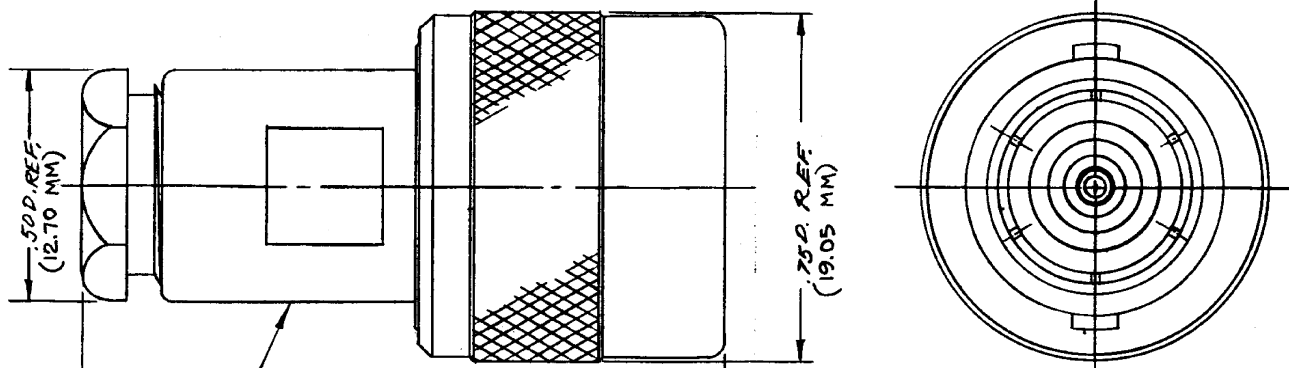


S-D

M39012/15-0002

S-D



STAMP:
91836 M39012/15-0002, KD-59-130 XXXX

.134 REF.
(34.03 MM)

DATE CODE

NOTES:
FOR USE WITH RG 55, 58 & 223/U CABLE GROUPS.

REVISIONS	
ISSUE	CHANGES
3	CN 23168 E GJG 25 MAR 82
4	CN 32256 A LNM 5 JUN 90
5	CN 38757 E BDH 22 JAN 03

KD-59-130	
REF SUPERSEDES UG 709 B/U	
FINISH	
SPEC.	
MATL.	
SPEC.	
C PLUG	
DRAWN CRS	DATE 13 APR 70
APPR.	DATE

UNLESS OTHERWISE SPECIFIED:

1. TOLERANCES: FRACTIONS & 2 PLACE DECIMALS ± .010
3 PLACE DECIMALS ± .004 ANGLES ± 0° 30'
2. REMOVE ALL BURRS, BREAK SHARP EDGES .005 MAX.
3. NO FILLETS PERMITTED.
4. SURFACE ROUGHNESS 63 MICROINCHES RMS MAX.
5. ALL DIMENSIONS PRIOR TO PLATING.

ITEM	REQ'D	DESCRIPTION	DRAWING NO.

KINGS ELECTRONICS
40 MARBLEDALE ROAD
TUCKAHOE, N. Y. 10707
M39012/15-0002

S-D