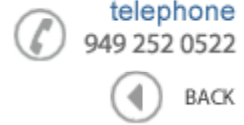




Data Sheet



Product Category: RF SAW Filter

Part Number	Package	Application	Last Modified
800-RF1575.42M-G	1.6 x 2.0 SMD	GPS	Mar. 2, 2007

TYPE :
GPS, RF SAW Filter

PART NUMBER :
800-RF1575.42M-G

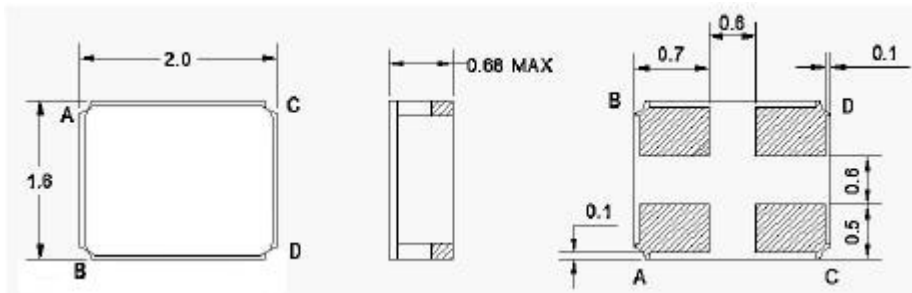


OPERATING CONDITIONS / ELECTRICAL CHARACTERISTICS

PARAMETERS	Condition	Minimum	Typical	Maximum	Units
Center Frequency (Fo)	-	-	1575.42	-	MHz
Maximum Insertion Loss	1574.42~ 1576.42 MHz	-	1.7	2.2	dB
Attenuation:	DC~ 1400.0 MHz	35	37	-	dB
	1400.0~ 1475.0 MHz	35	38	-	
	1475.0~ 1525.0MHz	30	35	-	
	1625.0~ 1640.0 MHz	40	55	-	
	1640.0~ 2000.0 MHz	35	40	-	
2000.0~ 3000.0 MHz	25	29	-	-	
Source Impedance (single ended)*	-	-	50	-	ohm
Load Impedance (single ended)*	-	-	50	-	ohm
VSWR	1574.42~ 1576.42 MHz	-	1.15	2.0	-
Amplitude Ripple	1574.42~ 1576.42 MHz	-	0.1	1.0	dBp-p
Maximum DC Voltage	-	-	-	5	V
Maximum Input Power	-	-	-	10	dBm
Operating Temperature	-	-40	-	+85	°C

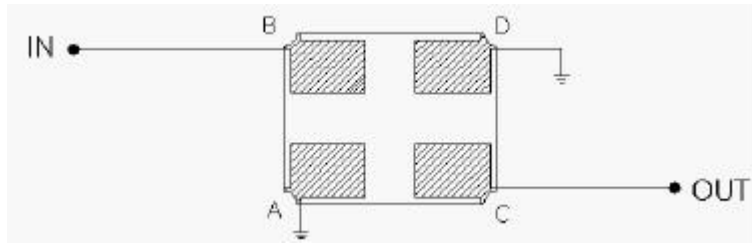
* No Matching Network(Ref. Testing Enviroment Circuit as shown below)

PACKAGE OUTLINE (mm)



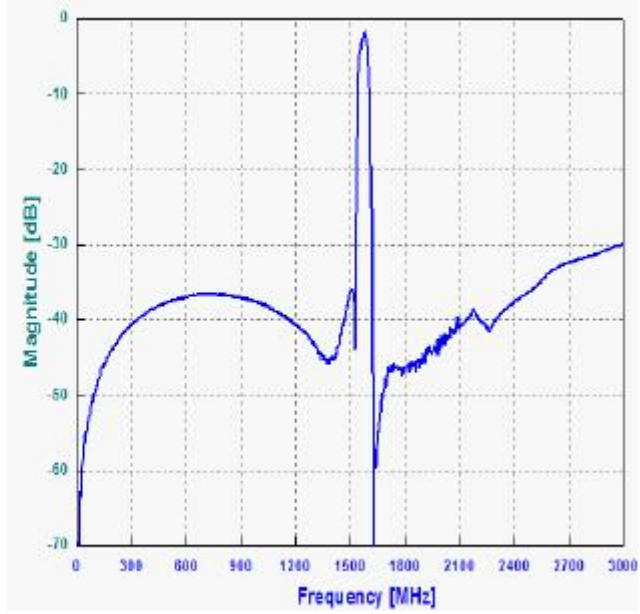
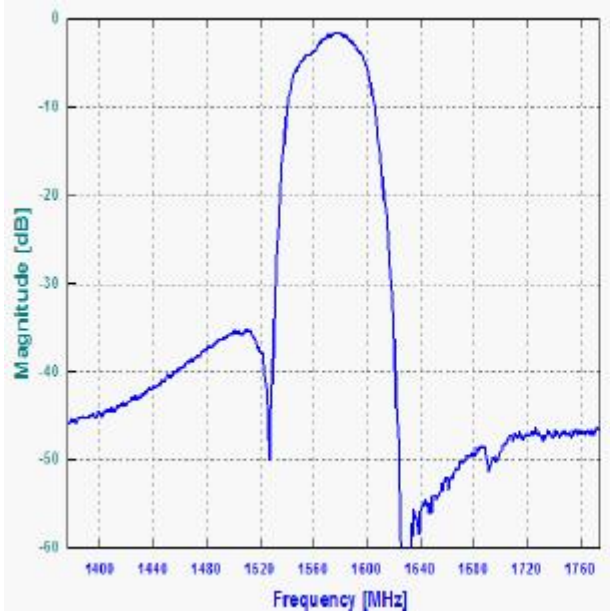
PIN LAYOUT	
A	Ground
B	In
C	Out
D	Ground

TEST FIXTURE

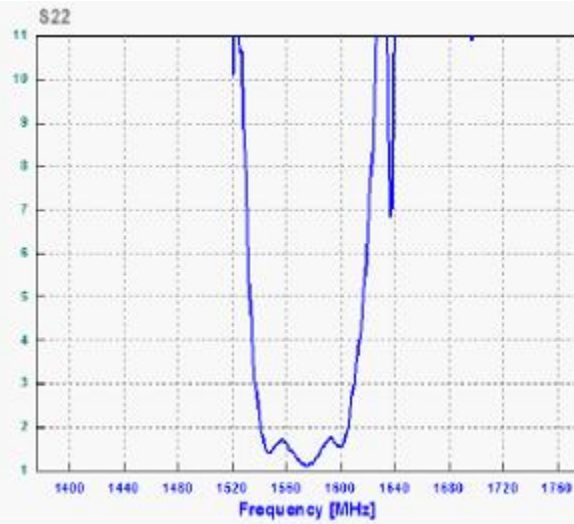
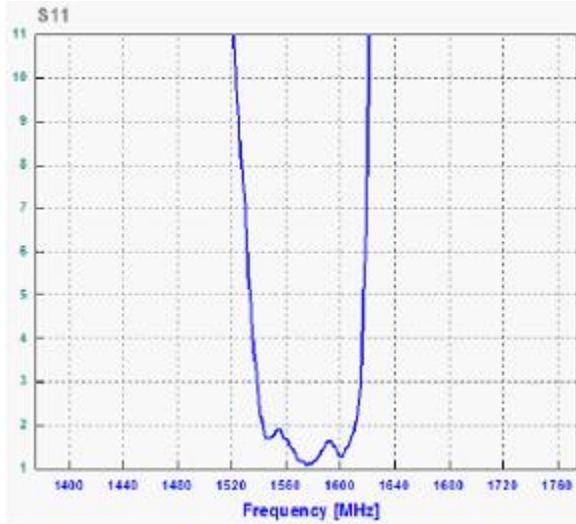


Load/ Source Impedance = 50 ohms

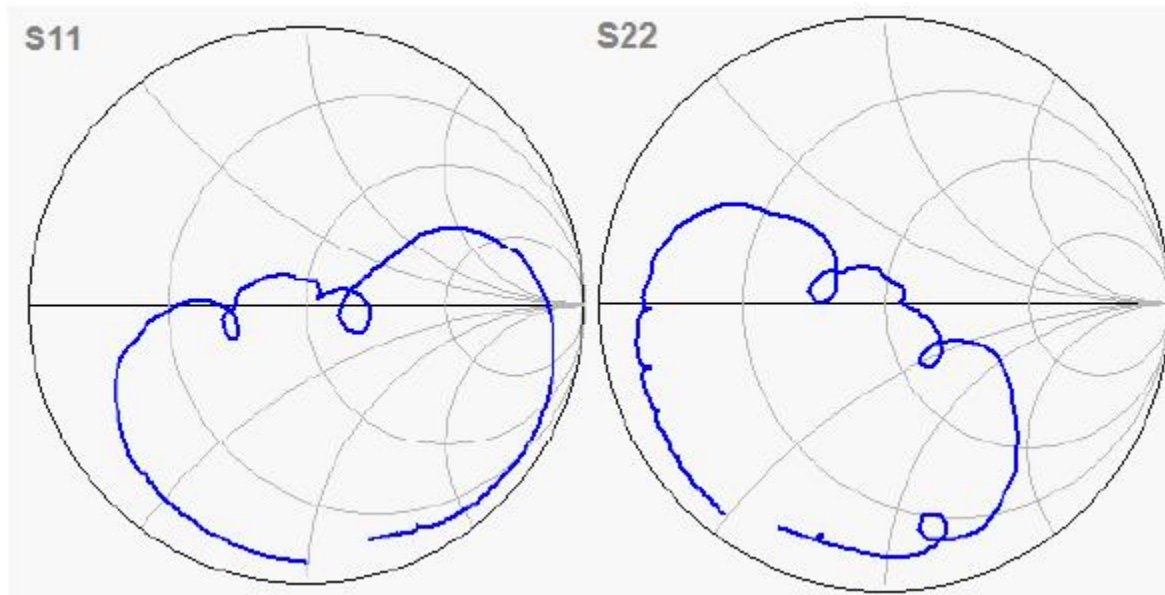
FREQUENCY RESPONSE



VSWR



SMITH CHART



Oscilent Corporation - CALL **949.252.0522**

Part No.: 800-RF1575.42M-G

18195 East McDermott Street , Building D , Irvine , CA 92614 , USA
Fax: 949.252.0599 , E-Mail: Sales@Oscilent.com