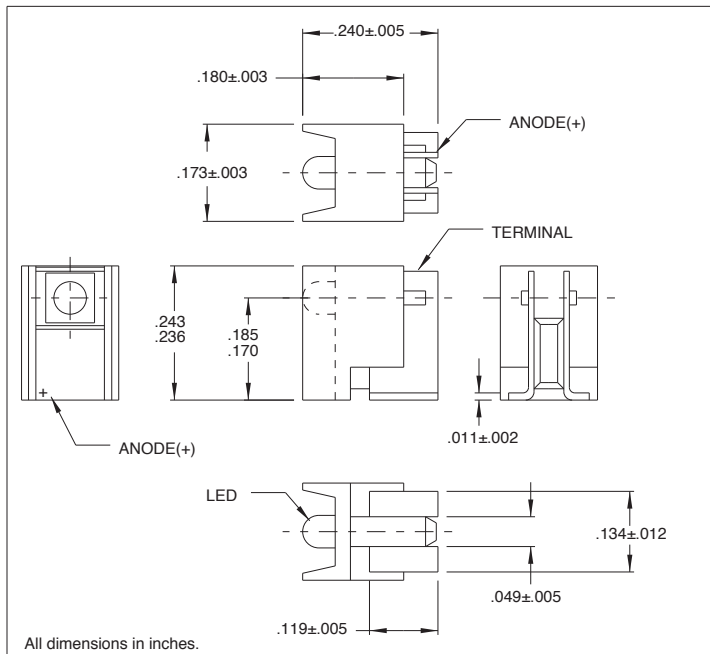


## 6200T Series Bright★Pipes™ Right Angle Sub-Miniature SMT LED Assemblies

### Description and Features



- Tape and reel packaged for high-speed pick-and-place installation.
- Packaged 1000 pieces per reel.
- Convection and vapor-phase reflow compatible.
- Compact form enables high density placement.
- Ideal for backlighting applications.
- Wide angle view.
- Direct-view optics provide smooth uniform appearance.
- High output.
- Low current (2mA).
- Built-in resistor for 5V and 5V low current.
- 100K+ hour MTBF.
- Easy post-reflow solder joint inspection.
- No adhesives.
- UL94V-O rated housing of black polyphenylen sulfide.

Refer to "Solder Pad Geometry 3.pdf"

### Electro-Optical Characteristics and Ratings

Part Number	Color	Lens Color	Rated Current (mA)	Luminous Intensity Typ. (mcd)	Forward Voltage Typ. (V)	Forward Voltage Max. (V)	Peak Wavelength (nm)
6200T1	Red	Red	10	5.0	2.2	3.0	635
6200T3	Amber	Amber	10	5.0	2.0	3.0	603
6200T5	Green	Green	10	4.0	2.3	3.0	565
6200T7	Yellow	Yellow	10	3.8	2.2	3.0	585
6200T1LC	Red	Red	2.0	.5	1.8	2.2	635
6200T5LC	Green	Green	2.0	1.2	1.8	2.2	565
6200T7LC	Yellow	Yellow	2.0	.5	1.9	2.7	583
6202T1-5V	Red	Red	10	5.0	5.0	6.0	635
6202T3-5V	Amber	Amber	10	5.0	5.0	6.0	565
6202T5-5V	Green	Green	10	5.0	5.0	6.0	583
6202T1-5VLC	Red	Red	3.5	2.0	5.0	6.0	635
6202T3-5VLC	Amber	Amber	3.5	4.0	5.0	6.0	565
6202T5-5VLC	Green	Green	3.5	2.0	5.0	6.0	583