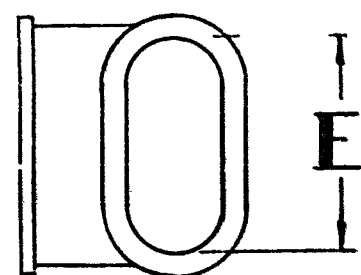
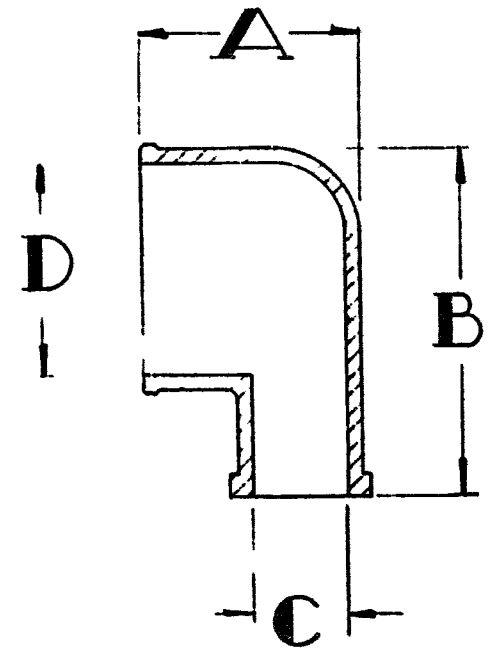
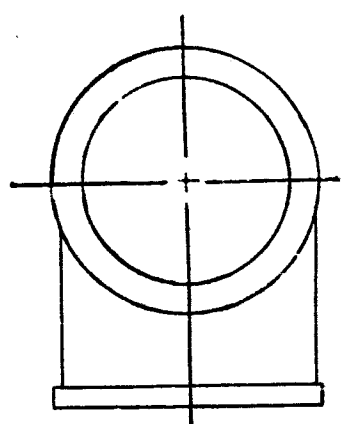


B	DWG No. 040-0000-001	CHG F	CHG. D.C.R.	REVISIONS	BY	DATE	CHK.
			A -	REDRAWN FOR CLARITY	H	8-25-59	LJS
			B -	"PART NO" COLUMN ADDED	H	11-20-59	LJS
			C -	TITLE WAS "CUP, CA3108ER&AR etc."	W H	11-24-59	RM
			D RC	ADDED KPT. SIZES 10 THRU 24 & TITLE	E. T.	11-24-59	LJS
			E R/C	MATL. WAS ZYTEL 101 NC-10 NATURAL	MH	11-25-59	K
			F	REVISED PER DCN M005529	KN	11-15-61	1/1991

INSERTS WITH CA-E
 1/6" x 1/2" CONTACTS
 20 & 16 & 12 CONTACTS
 INSERTS WITH CA-E
 1/8" x 1/4" CONTACTS



KPT SIZE	ER&AR SIZE	A ±.020	A ±.020	B ±.005	C ±.020	D ±.005	E ±.010	PART NO
10	10SL	.625	—	1.000	.272	.617	.616	040-0054-000
12	12S-12	.812	—	1.000	.272	.778	.772	-0095
14	14S-14	.812	—	1.000	.303	.852	.850	-0057
—	—	—	1.500	—	—	—	—	-0090
16	16S-16	.812	—	1.250	.375	.984	.975	-0039
—	—	—	1.750	—	—	—	—	-0092
18	18	1.000	—	1.250	.550	1.116	1.110	-0060
—	—	—	1.750	—	—	—	—	-0094
20	20	1.000	—	1.500	.582	1.245	1.235	-0061
—	—	—	1.750	—	—	—	—	-0095
22	22	1.000	—	1.500	.582	1.357	1.360	-0062
—	—	—	1.750	—	—	—	—	-0096
24	24	1.187	—	1.750	.630	1.490	1.485	-0063
—	—	—	1.875	—	—	—	—	-0097
28	28	1.375	—	2.000	.825	1.735	1.735	-0064
—	—	—	1.875	—	—	—	—	-0098
32	32	1.375	—	2.250	.825	2.021	2.021	-0065
—	—	—	1.875	—	—	—	—	-0099
36	36	1.375	—	2.500	.825	2.240	2.240	-0066
—	—	—	1.875	—	—	—	—	040-0100-000

MATL MOLDED ZYTEL 101 NC-10 NATURAL
FINISH NONE

Unless otherwise specified
all dimensions are in inches.
TOLERANCES
Fractional dimensions ± .010
Decimal dimensions ± .002
Angular tolerances ± 1/2°
Remove all burrs and sharp edges

REF HUGHES
CODE 05081
CUSTOMER DRAWING
CUPPOTTING KPT 08P 10-24
CUPPOTTING, CA3108ER&AR 10SL-36

CANNON ELECTRIC COMPANY
666 East Dyer Road Santa Ana, California
This document and drawings, sketches and schematic plans are the property of Cannon Electric Co., and no parts thereof may be reproduced and used without the written consent of the owner.

DWN. W.D.H.	CHK. LJS	APP. [Signature]	SIZE B	WT. ACT. CALC.	SCALE NONE	DWG. No. 040-0000-001	CHG. F
-------------	----------	------------------	--------	----------------	------------	-----------------------	--------