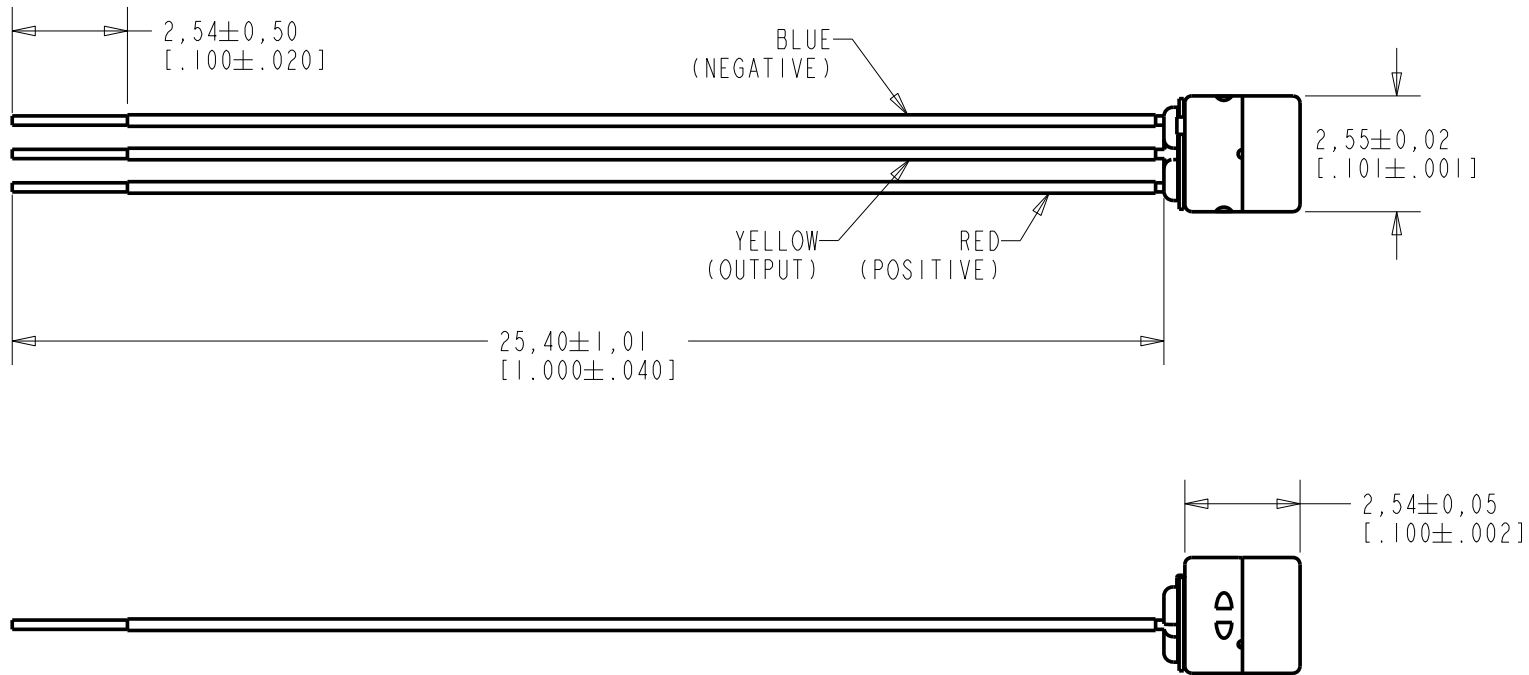


**FG-23742-D36**  
SHT 1.1



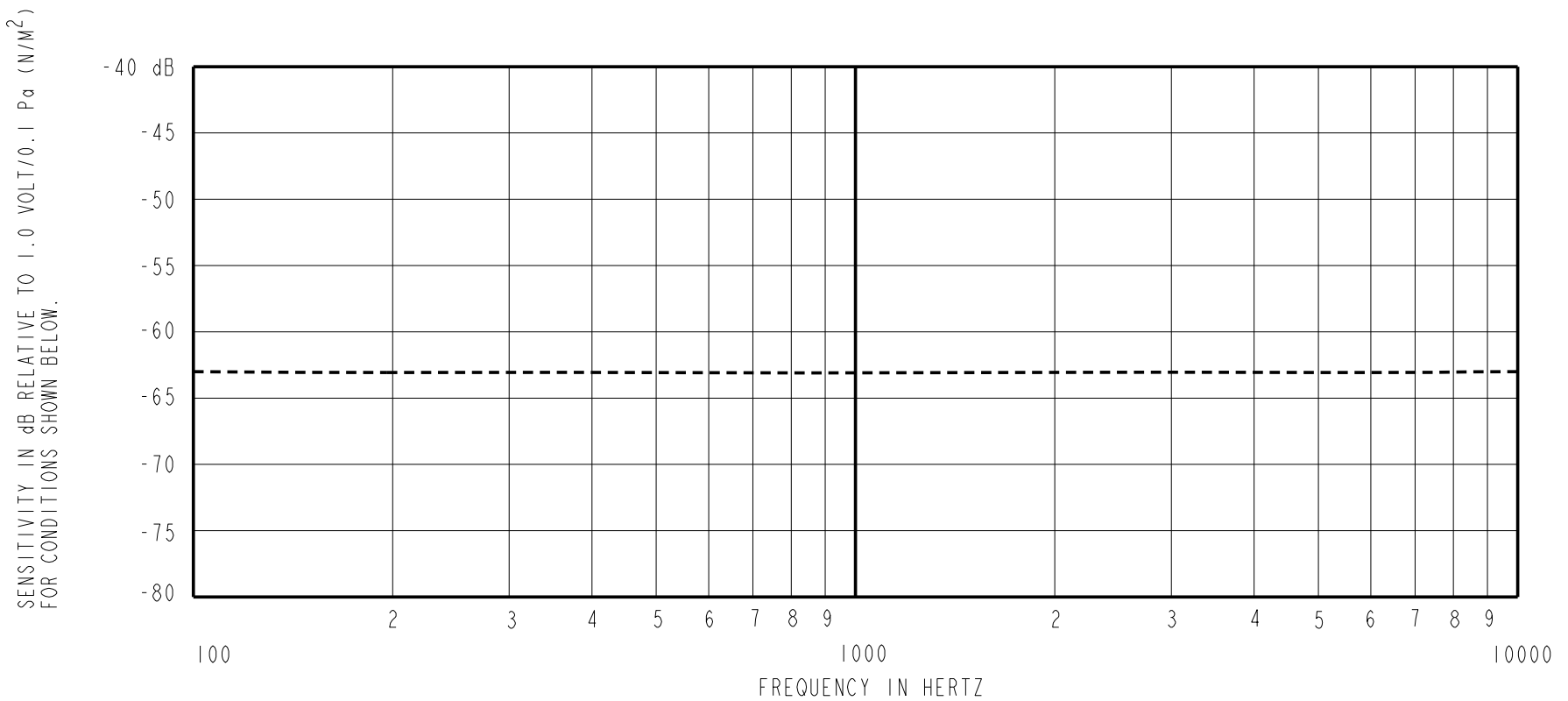
DIMENSIONS IN MILLIMETERS [INCHES]

| Revision | C.O. #    | Implementation Date | RELEASE LEVEL | REVISION |
|----------|-----------|---------------------|---------------|----------|
| E        | MI0103048 | 8-7-09              | Active        | E        |
| D        | MI0102788 | 4-13-09             |               |          |
|          |           |                     |               |          |

|                      |                                       |
|----------------------|---------------------------------------|
| SCALE:               | <b>8:1</b>                            |
| DO NOT SCALE DRAWING |                                       |
| TITLE:               | <b>MICROPHONE /CABLE FG-23742-D36</b> |
|                      | <b>SHT 1.1</b>                        |

|         |          |
|---------|----------|
| DR. BY  | DATE     |
| MMM     | 11-21-05 |
| CK. BY  | DATE     |
| GJP     | 11-22-05 |
| APP. BY | DATE     |
| GJP     | 11-22-05 |

**KNOWLES ELECTRONICS**  
ITASCA, ILLINOIS U.S.A.



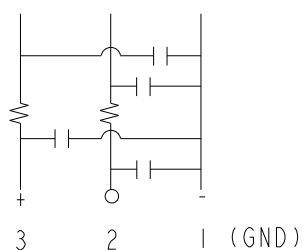
| FREQUENCY | SENSITIVITY |       |       | DEVICE CONFORMITY            |      |
|-----------|-------------|-------|-------|------------------------------|------|
|           | MIN.        | NOM.  | MAX.  | RANGE OF DEVIATION FROM 1KHz |      |
| 100       | ---         | -63.0 | ---   | -3.0                         | +3.0 |
| 1000      | -66.0       | -63.0 | -60.0 | 0.0                          | 0.0  |
| 10000     | ---         | -63.0 | ---   | -3.0                         | +3.0 |

NOTES:

1. CASE CONNECTED TO NEGATIVE TERMINAL.
2. MICROPHONE TO BE FUNCTIONAL WITH 3.0 VDC SUPPLY.
3. TYPICAL SENSITIVITY TO HUMIDITY AT 1000Hz IS 0.06 dB/%RH.
4. SENSITIVITY AND NOISE VALUES INDICATED ON THIS SPECIFICATION ARE VALID AT 50% HUMIDITY.

| DC SUPPLY | AMPLIFIER CURRENT DRAIN | SENSITIVITY CHANGE ON REDUCING SUPPLY TO 0.9VDC | "A" WEIGHTED NOISE (RE 1.0 VOLT) | OUTPUT IMPEDANCE OHMS |      |      | CAPACITANCE ±50% |      |
|-----------|-------------------------|---|----------------------------------|-----------------------|------|------|------------------|------|
|           |                         |   |                                  | MIN.                  | NOM. | MAX. | 1-2              | 1-3  |
| 1.3V      | 50 µA MAX.              | 3 dB MAX.                                       | 36.0 dB MAX.                     | 2800                  | 4400 | 6800 | 13pF             | 13pF |

CAPACITANCE PROBE POINTS



| Revision | C.O. #    | Implementation Date | RELEASE LEVEL | REVISION |
|----------|-----------|---------------------|---------------|----------|
| E        | M10103048 | 8-7-09              | Active        | E        |
| D        | M10102788 | 4-13-09             |               |          |

**KNOWLES ELECTRONICS**  
ITASCA, ILLINOIS U.S.A.

WHEN TEST LIMITS ARE USED TO ESTABLISH INCOMING INSPECTION ACCEPTANCE/REJECTION CRITERIA, CORRELATION OF TEST EQUIPMENT WITH KNOWLES IS ALSO REQUIRED FOR ELIMINATION OF EQUIPMENT AND TEST METHOD VARIATION

TITLE: **MICROPHONE /CABLE** **FG-23742-D36**  
PERFORMANCE SPECIFICATION **SHT 2.1**

| DR. BY  | DATE     |
|---------|----------|
| MMM     | 11-21-05 |
| CK. BY  | DATE     |
| GJP     | 11-22-05 |
| APP. BY | DATE     |
| GJP     | 11-22-05 |