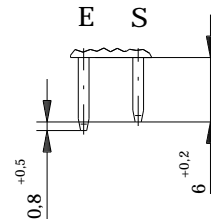
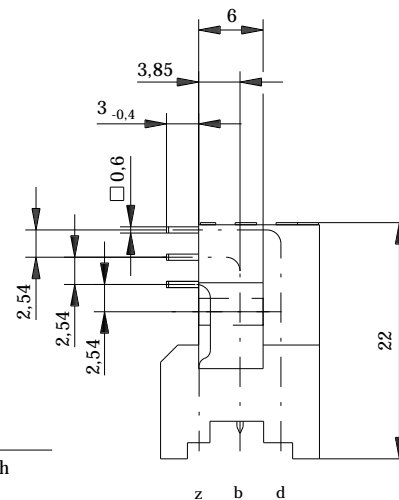


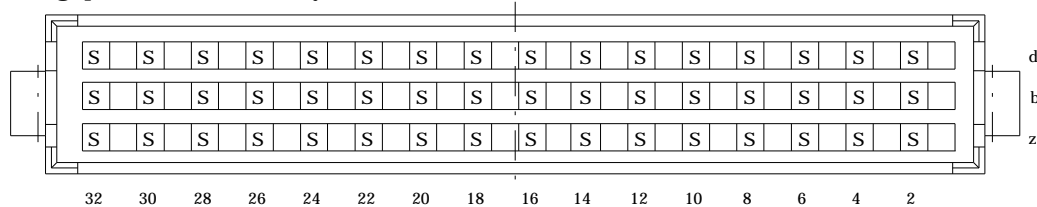
Stecklänge / mating length



E = early mate, late break / voreilend
S = standard



Bestückungsplan / contact layout



Lötanschluß 0.6 x 0.6 mm / solder terminal 0.6 x 0.6 mm

Isolierwerkstoff / housing material : PC GF30

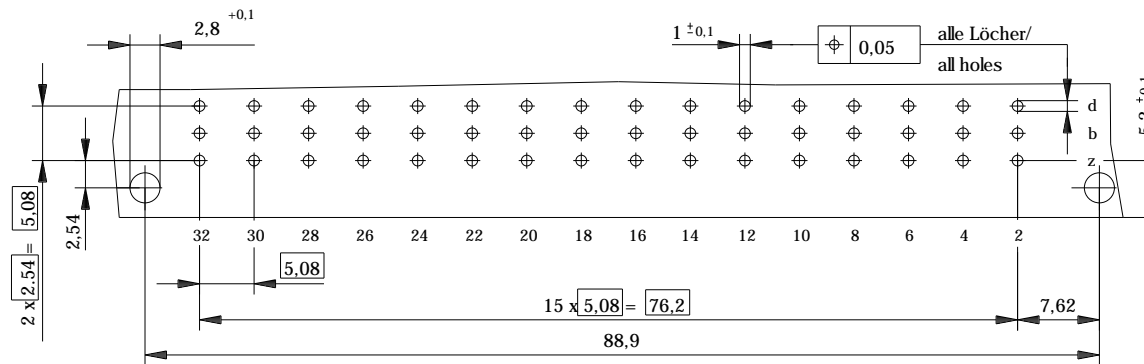
Bauart 3 / type 3

Anforderungsstufe 1 = 500 Steckzyklen / performance class 1 = 500 mating cycles

Fehlende Maße und Angaben nach IEC 60 603-2 / DIN EN 60 603-2

Missing information and dimensions per IEC 60 603-2

Leiterplatten-Lochbild / PCB drillhole pattern



| | | | | | |
|--|--|--|--|---|-----|
| Information: | | Tolerances | | Scale | 2:1 |
| All rights reserved. Only for information. To insure that this is the latest version of this drawing, please contact one of the ERNI companies before using. | | Subject to modification without prior notice. Drawing will not be updated. | | Designation | |
| | | www.ERNI.com | | Messerleiste F 48 Löt Male Connector F 48 Solder | |
| a | | 08.09.2006 | | 334203 | |
| Index | | Date | | 1 | |
| | | H:00059595.SZA | | STVF | |