

6

5

4

3

2

1

MATERIAL AND FINISH:

Insulator: PC (Polycarbonate), color black,
UL-94V-0 rated
Contacts: Brass, Nickel plated

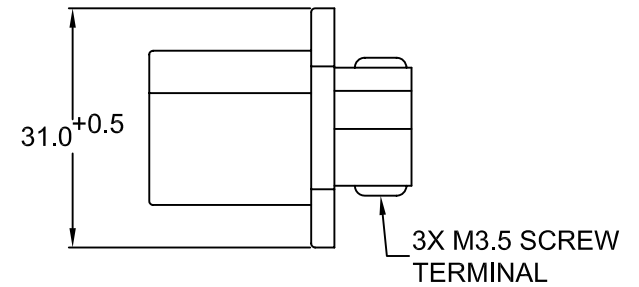
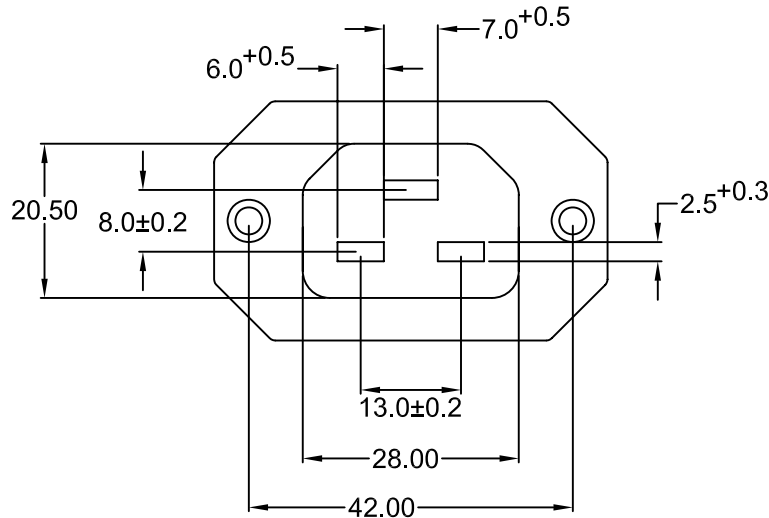
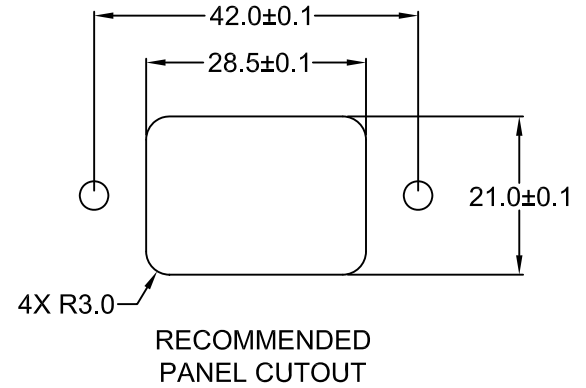
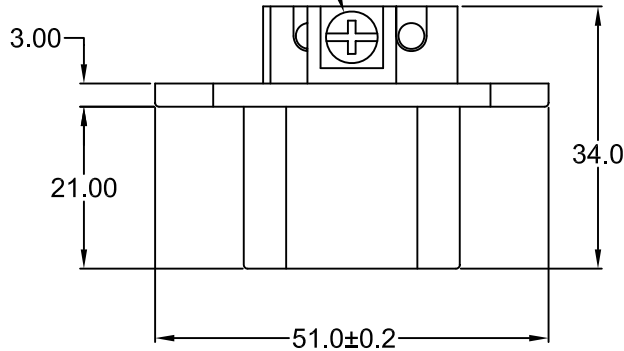
ELECTRICAL SPECIFICATIONS:

Current rating: 20 A
Voltage rating: 250 VAC
Insulation resistance: 100 Mohm min. at
500 VDC
Dielectric withstanding voltage: 2000 VAC
for one minute



RoHS
COMPLIANT

GREEN ANODIZED
GND SCREW



REVISIONS

REV	DATE	CHANGE	CHNG		CHK		APPR				
			WAS	SLS	TD	PB	SS	PB	TD	PB	
A	09/97	SCREW WAS 6-32									
B	04/99	UPDATED DIMENSIONS									
C	4/11/00	REVISED & UPDATE DIM									
D	11/16/01	REVISED / UPDATED									
E	4/27/10	REVISED / UPDATED									

TOLERANCE UNLESS OTHERWISE SPECIFIED	
X	± 1
X.X	± 0.4
X.XX	± 0.20
DRAWN BY	AH
DATE:	8/14/97
CHECK BY	TD
DATE:	4/27/99
APPR BY	PJ
DATE:	4/27/99

Power Dynamics, Inc.

Phone: 973 560-0019 Whippary, New Jersey Fax: 973 560-0076

PART: 20A IEC 60320 C21 APPL. OUTLET; SCREW
TERMINALS; SIDE FLANGE, PANEL MOUNT

43R06-2114 SHEET 1 of 1

SIZE: A ALL DIMENSIONS FOR REFERENCE ONLY
SCALE: NTS DIMENSIONS ARE IN MILLIMETERS REV: E

6

5

4

3

2

1