

APPLICATOR STYLE CONVERSION CHART with columns for PART NUMBER, REVISION, DESCRIPTION, FEED TYPE, CONVERT TO, and PART NUMBERS REQUIRED. Includes a diagram of the applicator.

APPLICATOR DATA table with columns for CRIMP SIZE and TYPE, listing WIRE and INSUL dimensions.

TERMINAL DATA: MOLEX TERMINAL MOLEX CRIMP SPECIFICATION table with columns for WIRE STRIP LENGTH, INSULATION DIAMETER RANGE, and APPLICATION SPECIFICATION.

TERMINALS APPLIED table with columns for TE TERMINAL, MOLEX TERMINAL, TE TERMINAL, and MOLEX TERMINAL.

WIRE SIZE CRIMP HEIGHT table with columns for WIRE SIZE, CRIMP HEIGHT mm [INCH], and CRIMP HEIGHT REFERENCE SETTING.

TERMINAL DATA: MOLEX TERMINAL MOLEX CRIMP SPECIFICATION table (middle column).

TERMINALS APPLIED table (middle column).

WIRE SIZE CRIMP HEIGHT table (middle column).

TERMINAL DATA: MOLEX TERMINAL MOLEX CRIMP SPECIFICATION table (right column).

TERMINALS APPLIED table (right column).

WIRE SIZE CRIMP HEIGHT table (right column).

- RECOMMENDED SPARE PARTS
GREASE BEARING SURFACES LIGHTLY
LUBRICATE DAILY PER THE APPLICATOR INSTRUCTION SHEET SUPPLIED WITH THE APPLICATOR.
APPLICATOR SPECIFIC DATA TO BE ENTERED INTO BLANK MEMORY CHIP AT ASSEMBLY...
ADJUSTMENT OF THE STRIPPER MAY BE REQUIRED WHEN MOVING THE APPLICATOR BETWEEN BENCH AND LEADMAKER APPLICATIONS.
APPLY PART NUMBER 1-23419-5 LOCTITE TO THREADS OF ITEM 62...
GREASE THREADS, GROOVE AND O-RING ON ITEMS 35 & 252.
MAGNET, ITEM 166 MUST BE ORIENTED CORRECTLY IN ORDER TO PROPERLY ACTUATE THE COUNTER.
CRIMP HEIGHT REFERENCE SETTING WAS THE SETTING USED WHEN THE APPLICATOR WAS QUALIFIED AT THE FACTORY...
SPARE FEED CAM STORAGE LOCATION REFER TO INSTRUCTION SHEET FOR ADDITIONAL INFORMATION.
TO CONVERT THE APPLICATOR TO A NON-CARRIER CUTTING STYLE...
WHEN ASSEMBLING A NON CRIMP HEIGHT ADJUST APPLICATOR (-6) USE SHIMS FROM ITEM 260 TO ACHIEVE A NOMINAL SHIM HEIGHT OF 4.78.

*WARNING ON INSTALLATION, SET WIRE DISC, ITEM 40 TO LARGEST WIRE SIZE SETTING. USE OF SETTINGS BELOW MINIMUM REQUIRED CRIMP HEIGHT SETTING WILL CAUSE DAMAGE TO CRIMP TOOLING.

Table with columns for PART NO, DESCRIPTION, and ITEM NO, listing parts like APPLICATOR SHIM PACK and O-RING.

ATLANTIC VERSION Shown on sheets 1 of 4 & 2 of 4 (Pacific version shown on sheets 3 of 4 & 4 of 4)

SET UP GAUGE table with columns for LOC, DIST, P, LTM, DESCRIPTION, DATE, DWN, APVD.

Large table listing parts with columns for P, LTM, DESCRIPTION, DATE, DWN, APVD, and ITEM NO. Includes part numbers like 2119641-1, 2119799-1, etc.

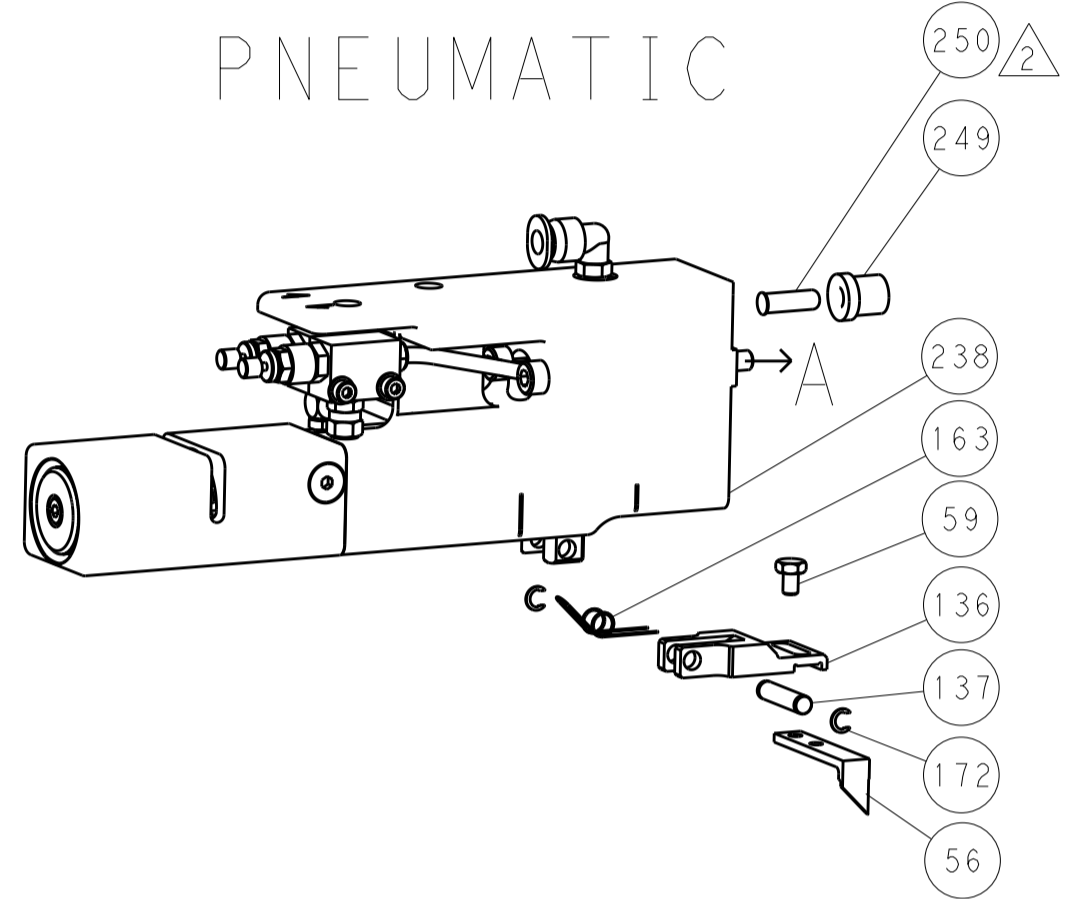
Customer Accessible Production Drawing form with fields for DIMENSIONS, TOLERANCES, MATERIAL, WEIGHT, SCALE, and SHEET NO.

LOC		DIST		REVISIONS			
A	66	P	LTM	DESCRIPTION	DATE	DWN	APVD
				SEE SHEET 1			

FEED TYPE MECHANICAL



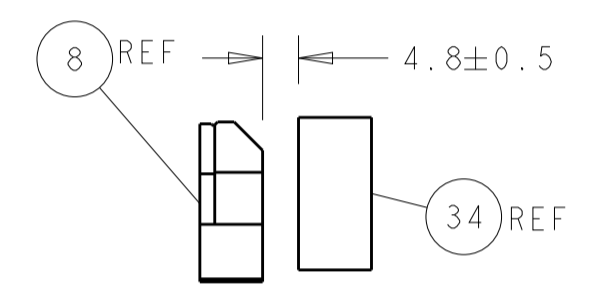
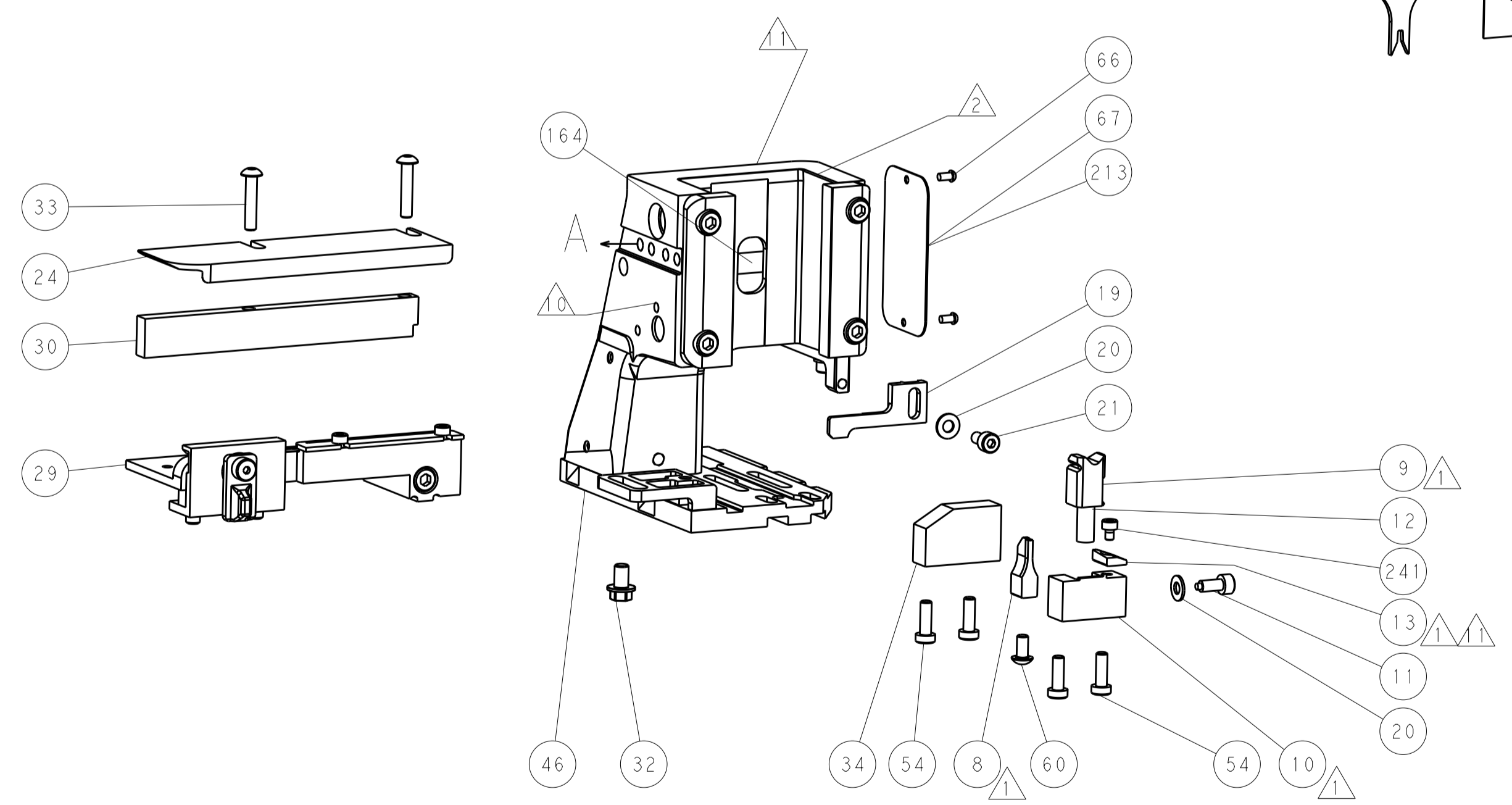
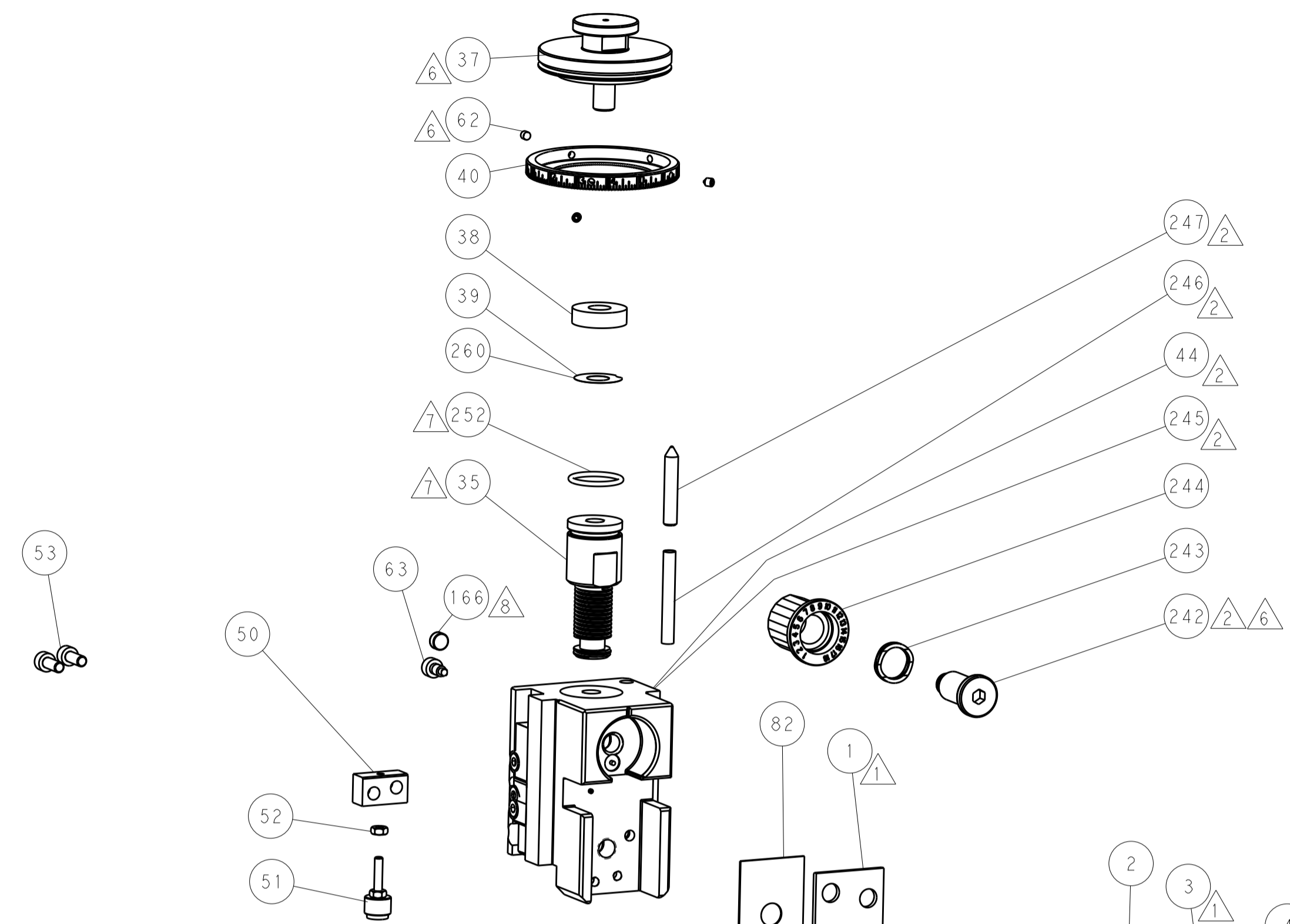
PNEUMATIC



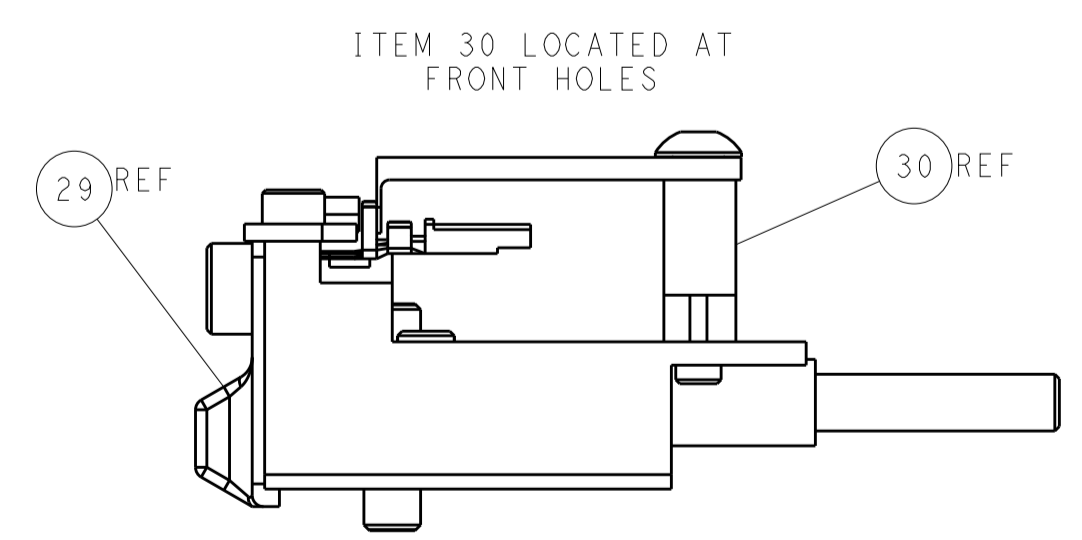
SERVO LATCH PLATE



CAM POSITIONS



TERMINAL SUPPORT LOCATION



ITEM 30 LOCATED AT FRONT HOLES

FEED TRACK POSITION GUIDE BY INSULATION BARREL

ATLANTIC VERSION
 Shown on sheets 1 of 4 & 2 of 4
 (Pacific version shown on sheets 3 of 4 & 4 of 4)

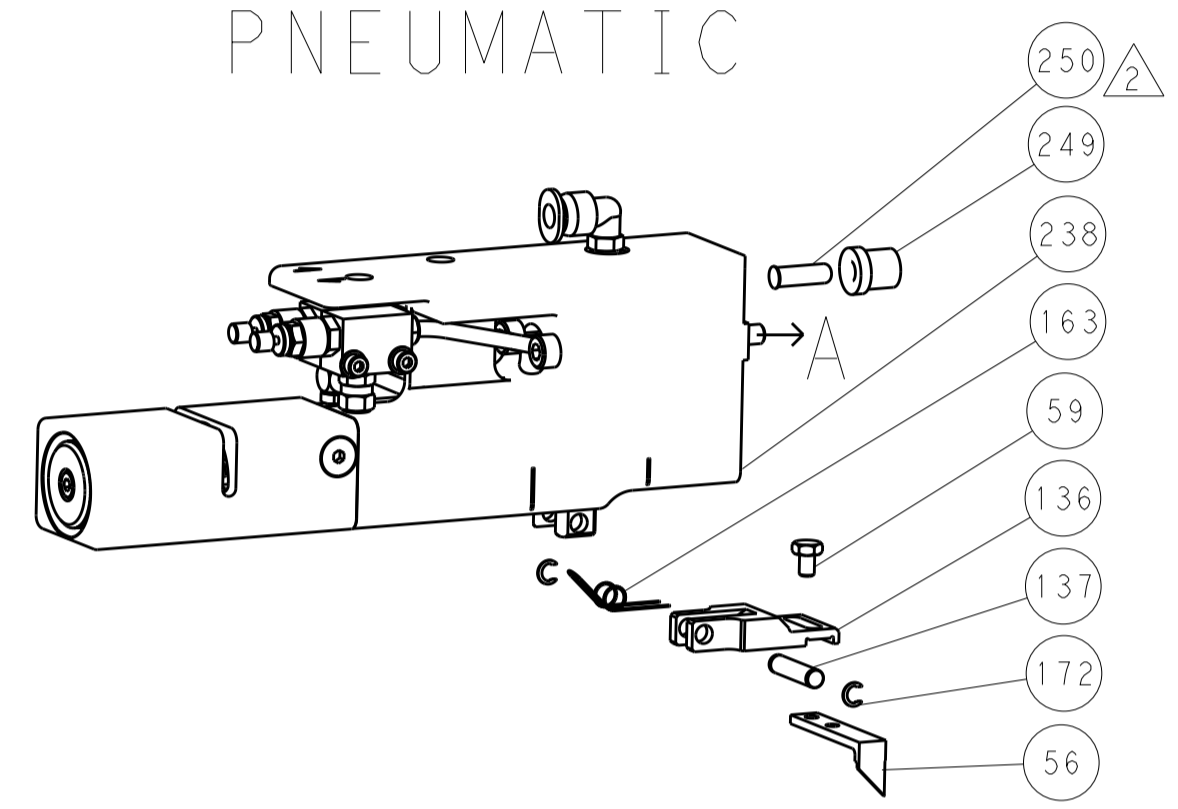
DIMENSIONS:		TOLERANCES UNLESS OTHERWISE SPECIFIED:		DWN Y. YIN 29AUG2014		TE Connectivity	
mm	0 PLC ±	1 PLC ±	2 PLC ±	3 PLC ±	4 PLC ±	5 PLC ±	Harrisburg, PA 17105-3608
MATERIAL:		FINISH:		CHK G. BAILEY 29AUG2014		NAME Ocean Side Feed Applicator	
				APVD H. GUO 29AUG2014		RESTRICTED TO	
				PRODUCT SPEC		SIZE CAGE CODE DRAWING NO	
				APPLICATION SPEC		A1 00779 ©=2266428	
				WEIGHT		SCALE 1:2 SHEET 2 OF 4 REV A2	
				Customer Accessible Production Drawing		SHEETS 3 & 4 ARE NOT REQUIRED FOR ATLANTIC VERSION	

LOC		DIST		REVISIONS			
A	66	P	LTM	DESCRIPTION	DATE	DMN	APVD
		-	-	SEE SHEET 1	-	-	-

FEED TYPE MECHANICAL



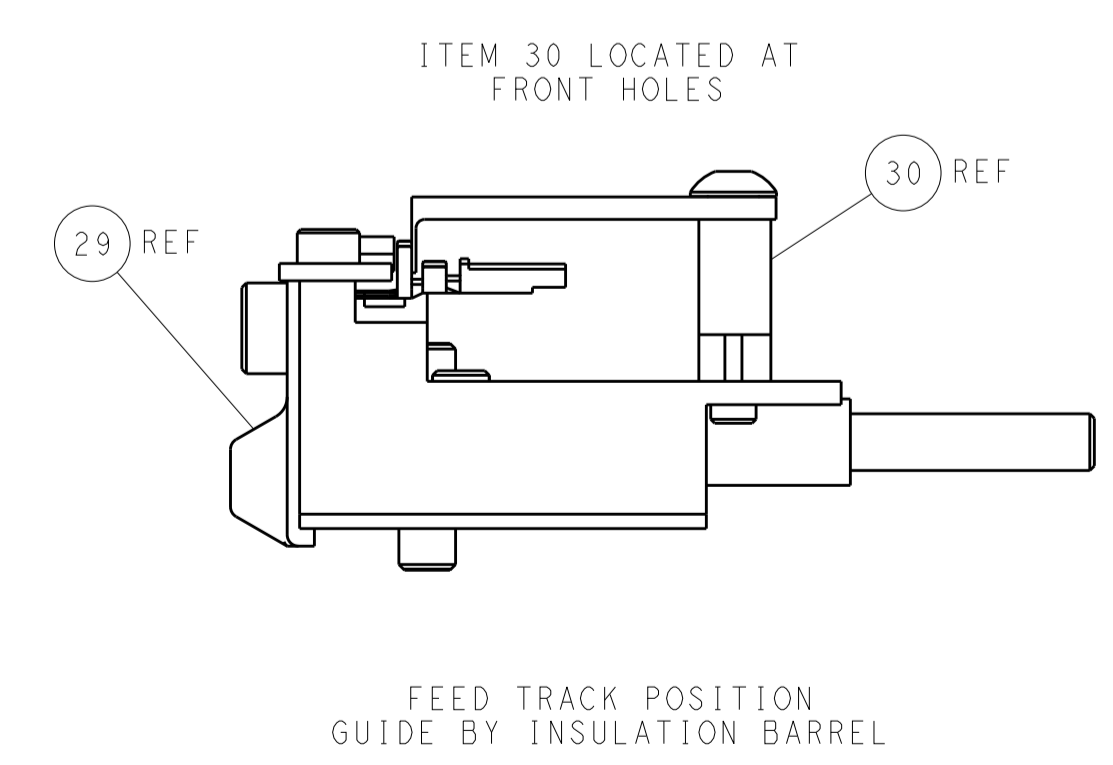
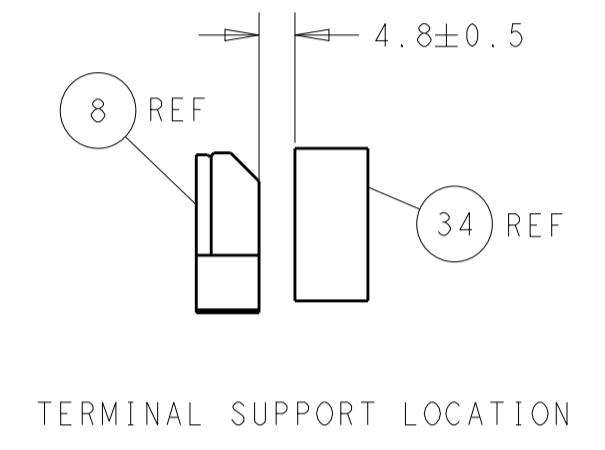
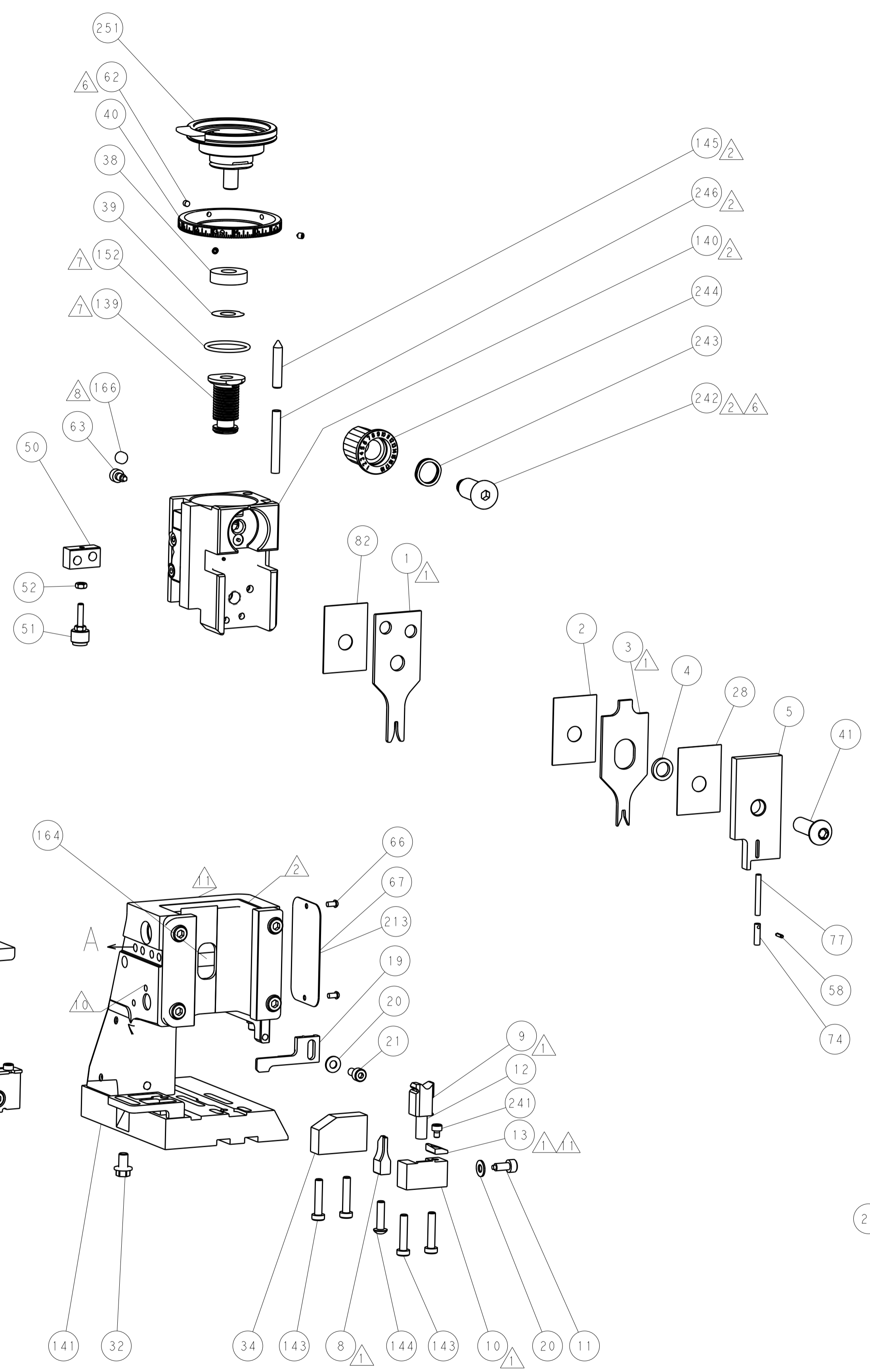
PNEUMATIC



SERVO LATCH PLATE



CAM POSITIONS



PACIFIC VERSION
 Shown on sheets 3 of 4 & 4 of 4
 (Atlantic version shown on sheets 1 of 4 & 2 of 4)

DIMENSIONS:		TOLERANCES UNLESS OTHERWISE SPECIFIED:		DWG: Y. YIN 29AUG2014		CHK: G. BAILEY 29AUG2014		APVD: H. GUO 29AUG2014		NAME: Ocean Side Feed Applicator	
mm	0 PLC	±		SIZE	CAGE CODE	DRAWING NO	RESTRICTED TO	STE TE Connectivity Harrisburg, PA 17105-3608			
	1 PLC	±		APPLN SPEC				Customer Accessible Production Drawing			
	2 PLC	±		WEIGHT	A1 00779 C=2266428			SCALE: 1:2 SHEET 4 OF 4 REV: A2			
	3 PLC	±						SHEETS 1 & 2 ARE NOT REQUIRED FOR PACIFIC VERSION			
	4 PLC	±									
	ANGLES	±									
MATERIAL	FINISH										