

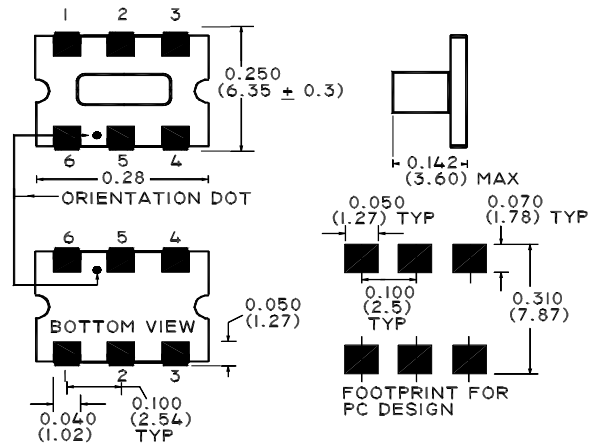
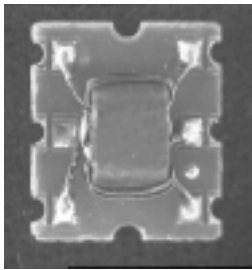


## E-Series 75 Ohm Coupler 5 - 870 MHz

### Features

- Coupling +10db Typical
- Surface Mount
- Low Profile
- Excellent Return Loss
- Tape & Reel Packaging available

### SM-55 Package



### Description

M/A-COM's ELDC-10 is a high performance 75 Ohm Coupler, in a SM-55 low cost, surface mount package. The ELDC-10 is designed for use in high volume CATV applications. Typical applications include Settop Boxes, Network Interface Units, Line Amplifiers and Headend equipment.

### Electrical Specifications @25°C, Z<sub>0</sub> = 75 Ohms

Frequency Range	5 - 870 MHz	Units	Nominal	Typical	Minimum	Maximum
Mainline Loss	5 - 500 MHz	dB	—	0.9	—	1.3
	500 - 870 MHz	dB	—	1.0	—	1.5
Coupling	5 - 870 MHz	dB	10	—	—	± 0.5
Coupling Flatness		dB	—	—	—	1.0
Directivity	5 - 500 MHz	dB	—	23	20	—
	500 - 870 MHz	dB	—	21	17	—
Input Return Loss	5 - 870 MHz	dB	—	20	18	—
Output Return Loss	5 - 870 MHz	dB	—	20	18	—
Coupled Return Loss	5 - 870 MHz	dB	—	20	18	—

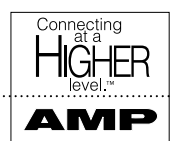
S 1342 F



M/A-COM Division of AMP Incorporated ■ North America: Tel. (800) 366-2266, Fax (800) 618-8883 ■ Asia/Pacific: Tel. +85 2 2111 8088, Fax +85 2 2111 8087 ■ Europe: Tel. +44 (1344) 869 595, Fax+44 (1344) 300 020

www.macom.com

AMP and Connecting at a Higher Level are trademarks.  
Specifications subject to change without notice.



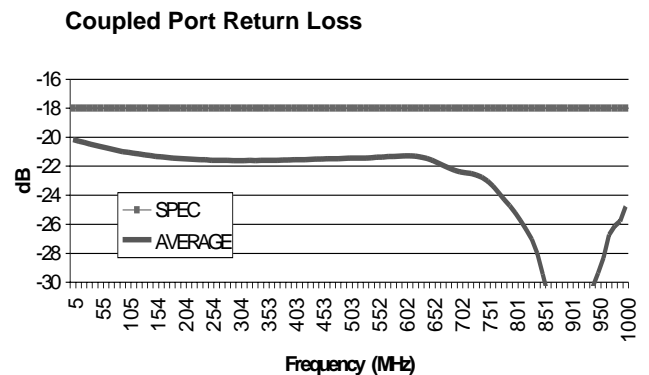
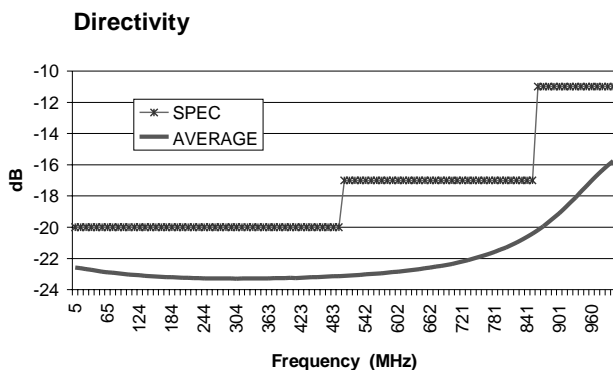
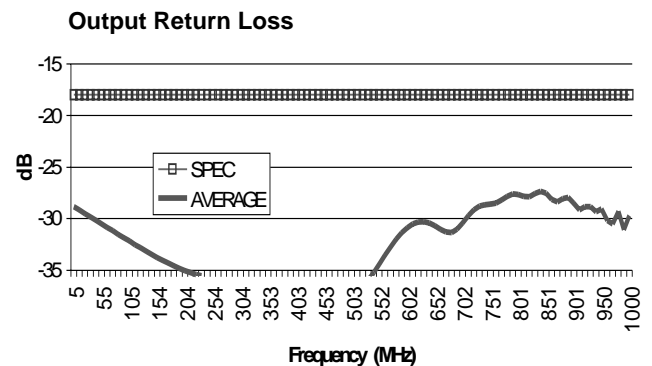
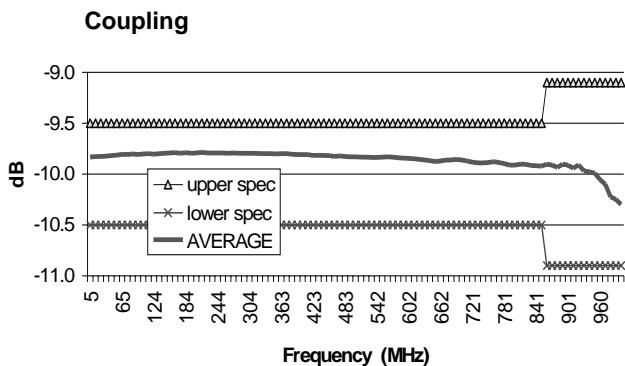
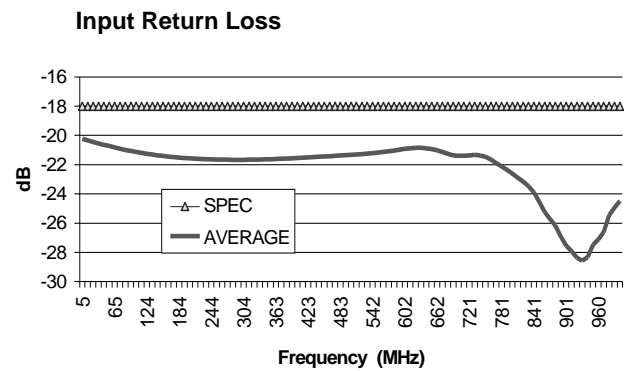
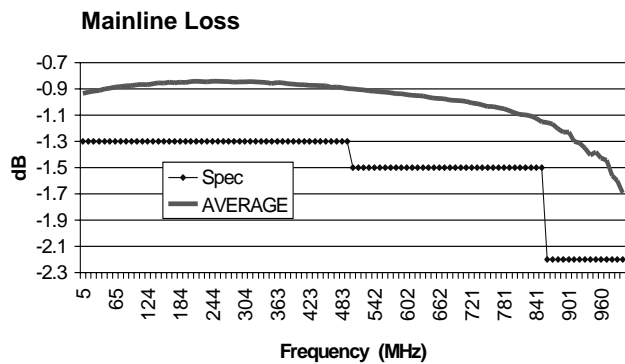
### Absolute Maximum Ratings

Parameter	Absolute Maximum
RF Power	250 mW
DC Current	30 mA
Storage Temperature	-55°C to +100°C
Operating Temperature	-40°C to +70°C

### Operating Characteristics

Function	Pin No.
Input	6
Output	1
Coupled	4
External 75 Ohms	3
Ground	5
Not Connected	2

### Typical Performance @ +25°C



S 1342 F



M/A-COM Division of AMP Incorporated ■ North America: Tel. (800) 366-2266, Fax (800) 618-8883 ■ Asia/Pacific: Tel. +85 2 2111 8088, Fax +85 2 2111 8087 ■ Europe: Tel. +44 (1344) 869 595, Fax +44 (1344) 300 020

www.macom.com

AMP and Connecting at a Higher Level are trademarks. Specifications subject to change without notice.

