

PLEASE CHECK WWW.MOLEX.COM FOR LATEST PART INFORMATION

Part Number: [0038002405](#)
Status: **Active**
Overview: [kk](#)
Description: 2.54mm (.100") Pitch KK® Connector, IDT, High Pressure Cat Ear Contact System, Green ID Stripe, 15 Circuit

Documents:

[Drawing \(PDF\)](#) [Product Specification PSX-7690S \(PDF\)](#)
[Product Specification PS-99020-0088 \(PDF\)](#) [RoHS Certificate of Compliance \(PDF\)](#)

Agency Certification

UL E29179

General

Product Family IDT and Solder Connectors
 Series [7690](#)
 Comments Version H
 Crimp Quality Equipment Yes
 Overview [kk](#)
 Product Name KK®

Physical

Circuits (Loaded) 15
 Color - Resin Natural
 Durability (mating cycles max) 25
 Flammability 94V-2
 Gender Female
 Glow-Wire Compliant No
 Lock to Mating Part Yes
 Material - Metal Brass
 Material - Plating Mating Tin
 Material - Plating Termination Tin
 Material - Resin Nylon
 Number of Rows 1
 Packaging Type Bag
 Panel Mount No
 Pitch - Mating Interface (in) 0.100 In
 Pitch - Mating Interface (mm) 2.54 mm
 Plating min: Mating (µin) 40
 Plating min: Mating (µm) 1.00
 Plating min: Termination (µin) 40
 Plating min: Termination (µm) 1.00
 Temperature Range - Operating 0°C to +75°C
 Wire Size AWG 24 Stranded, 26 Solid, 26 Stranded Topcoat

Electrical

Current - Maximum per Contact 2.5A
 Voltage - Maximum 250V

Solder Process Data

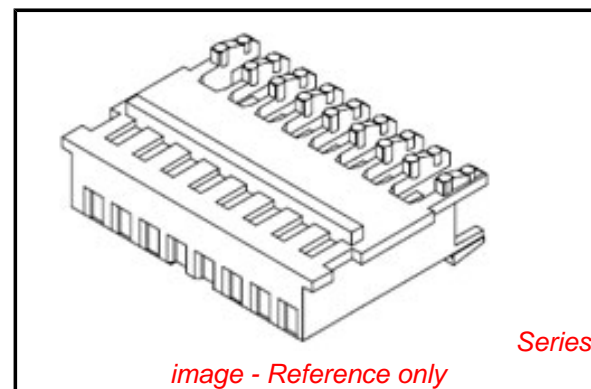
Lead-free Process Capability Wave Capable (TH only)

Material Info

Old Part Number 7690SC15H

Reference - Drawing Numbers

Packaging Specification PK-7690-001



EU RoHS

ELV and RoHS Compliant
REACH SVHC
 Not Reviewed
Halogen-Free Status
Not Reviewed

China RoHS



Need more information on product environmental compliance?

Email productcompliance@molex.com
 For a multiple part number RoHS Certificate of Compliance, [click here](#)

Please visit the [Contact Us](#) section for any non-product compliance questions.

Search Parts in this Series

[7690Series](#)

Mates With

Molex KK® 2.54mm (.100") pitch headers and 0.64mm (.025") pins

Application Tooling | FAQ

Tooling specifications and manuals are found by selecting the products below. Crimp Height Specifications are then contained in the Application Tooling Specification document.

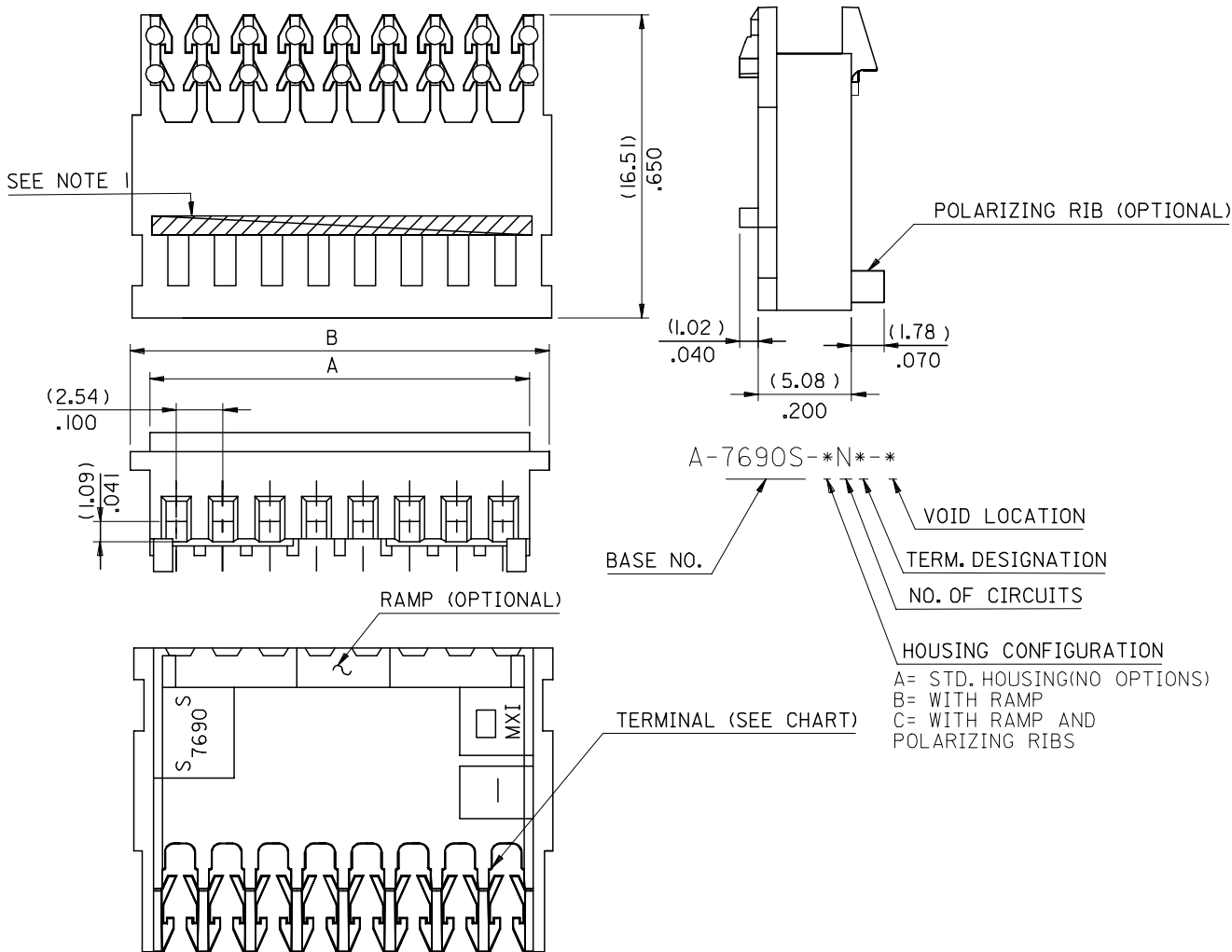
Global

| Description | Product # |
|--|----------------------------|
| Changehead for 7720 and 7720s Connector Range, Colour Bar In, Feed-To Only | 0690080225 |

This document was generated on 05/19/2010

PLEASE CHECK WWW.MOLEX.COM FOR LATEST PART INFORMATION

| CCT. | DIM "A" | DIM "B" |
|------|---------------|---------------|
| 2 | (2.54)/.100 | (7.59)/.299 |
| 3 | (5.08)/.200 | (10.13)/.399 |
| 4 | (7.62)/.300 | (12.67)/.499 |
| 5 | (10.16)/.400 | (15.21)/.599 |
| 6 | (12.70)/.500 | (17.75)/.699 |
| 7 | (15.24)/.600 | (20.29)/.799 |
| 8 | (17.78)/.700 | (22.83)/.899 |
| 9 | (20.30)/.800 | (25.37)/.999 |
| 10 | (22.86)/.900 | (27.92)/1.099 |
| 11 | (25.40)/1.000 | (30.45)/1.199 |
| 12 | (27.94)/1.100 | (32.99)/1.299 |
| 13 | (30.48)/1.200 | (35.53)/1.399 |
| 14 | (33.02)/1.300 | (38.07)/1.499 |
| 15 | (35.56)/1.400 | (40.61)/1.599 |
| 16 | (38.10)/1.500 | (43.15)/1.699 |
| 17 | (40.64)/1.600 | (45.69)/1.799 |
| 18 | (43.18)/1.700 | (48.23)/1.899 |
| 19 | (45.72)/1.800 | (50.77)/1.999 |
| 20 | (48.26)/1.900 | (53.31)/2.099 |
| 21 | (50.80)/2.000 | (55.85)/2.199 |
| 22 | (53.34)/2.100 | (58.39)/2.299 |
| 23 | (55.88)/2.200 | (60.93)/2.399 |
| 24 | (58.42)/2.300 | (63.47)/2.499 |
| 25 | (60.96)/2.400 | (66.01)/2.599 |
| 26 | (63.50)/2.500 | (68.55)/2.699 |
| 27 | (66.04)/2.600 | (71.09)/2.799 |
| 28 | (68.58)/2.700 | (73.63)/2.899 |



- 1- COLOURED STRIPE RUNNING LENGTH OF THE RIB AS SHOWN
- 2- TERMINALS RO BE LUBRICATED PRIOR TO ASSEMBLY WITH MXI-3 LUBRICANT.
- 3- THIS ASSEMBLY WILL ACCOMODATE (1.24)/.056 MAX. DIA. INSULATION
- 4- CONNECTOR MATERIAL: NYLON 6/6 94V-2
- 5- FOR USE WITH (0.64)/.025 ROUND OR SQUARE WIRE TO INTERSECTION DEPTH OF (7.87/6.10) / .310/.240
- 6- VOIDS ARE AVAILABLE WITH DESIGNATED PIN ENTRY HOLES MOLDED CLOSED
- 7- ALL TERMINALS HAVE CAT-EARS CONFIGURATION
- 8- FOR STANDARD PARTS SEE FOLLOWING SHEETS
- 9- THIS PART CONFORMS TO PROD.SPEC.99020-0088

| REVISED SEET 2 EC NO: E2006-0657 DRWN:DMASZKI/EMI/CZ 2006/06/06 CHKD:D. MOR ARTY 2006/06/07 APPR: DENNEHY 2006/06/09 | QUALITY SYMBOLS | GENERAL TOLERANCES (UNLESS SPECIFIED) | DIMENSION STYLE | SCALE | DESIGN UNITS | THIRD ANGLE PROJECTION | | | | | | | | | | | | | | | |
|--|--|---|---|-------|--------------|------------------------|-------|-------|----------|-------|--------|----------|--------|--------|---------|--------|-------|-------|-----|--------|--|
| | $\nabla=0$ $\triangle=0$ | <table border="1"> <thead> <tr> <th></th> <th>mm</th> <th>INCH</th> </tr> </thead> <tbody> <tr> <td>4 PLACES</td> <td>± ---</td> <td>± ---</td> </tr> <tr> <td>3 PLACES</td> <td>± ---</td> <td>± .005</td> </tr> <tr> <td>2 PLACES</td> <td>± 0.13</td> <td>± .010</td> </tr> <tr> <td>1 PLACE</td> <td>± 0.25</td> <td>± ---</td> </tr> </tbody> </table> | | mm | INCH | 4 PLACES | ± --- | ± --- | 3 PLACES | ± --- | ± .005 | 2 PLACES | ± 0.13 | ± .010 | 1 PLACE | ± 0.25 | ± --- | MM/IN | 4:1 | METRIC | |
| | | mm | INCH | | | | | | | | | | | | | | | | | | |
| | 4 PLACES | ± --- | ± --- | | | | | | | | | | | | | | | | | | |
| 3 PLACES | ± --- | ± .005 | | | | | | | | | | | | | | | | | | | |
| 2 PLACES | ± 0.13 | ± .010 | | | | | | | | | | | | | | | | | | | |
| 1 PLACE | ± 0.25 | ± --- | | | | | | | | | | | | | | | | | | | |
| DESCRIPTION | DRAWN BY | DATE | TITLE | | | | | | | | | | | | | | | | | | |
| REV | MOHALLOR | 1998/09/16 | INSULATION DISPLACEMENT CONN. (2.54)/.100 CENTRELINES | | | | | | | | | | | | | | | | | | |
| | APPROVED BY | DATE | MOLEX INCORPORATED | | | | | | | | | | | | | | | | | | |
| | MWILHITE | 1998/09/16 | SDA-7690S-*N* | | | | | | | | | | | | | | | | | | |
| | MATERIAL NO. | DOCUMENT NO. | SHEET NO. | | | | | | | | | | | | | | | | | | |
| | | | 1 OF 3 | | | | | | | | | | | | | | | | | | |
| | DRAFT WHERE APPLICABLE MUST REMAIN WITHIN DIMENSIONS | | THIS DRAWING CONTAINS INFORMATION THAT IS PROPRIETARY TO MOLEX INCORPORATED AND SHOULD NOT BE USED WITHOUT WRITTEN PERMISSION | | | | | | | | | | | | | | | | | | |

10 9 8 7 6 5 4 3 2 1

| PART NO. | ENG. NO. | CCTS | TERM NO. | I.D. STRIPE | PLT.G. |
|------------|---------------|------|----------------|-------------|--------|
| 38-00-2212 | A-7690S-C 2J | 2 | 40 I25-(JP902) | BROWN | |
| 38-00-2213 | A-7690S-C 3J | 3 | | | |
| 38-00-2214 | A-7690S-C 4J | 4 | | | |
| 38-00-2215 | A-7690S-C 5J | 5 | | | |
| 38-00-2216 | A-7690S-C 6J | 6 | | | |
| 38-00-2217 | A-7690S-C 7J | 7 | | | |
| 38-00-2218 | A-7690S-C 8J | 8 | | | |
| 38-00-2219 | A-7690S-C 9J | 9 | | | |
| 38-00-2220 | A-7690S-C 10J | 10 | | | |
| 38-00-2221 | A-7690S-C 11J | 11 | | | |
| 38-00-2222 | A-7690S-C 12J | 12 | | | |
| 38-00-2223 | A-7690S-C 13J | 13 | | | |
| 38-00-2224 | A-7690S-C 14J | 14 | | | |
| 38-00-2225 | A-7690S-C 15J | 15 | | | |
| 38-00-2226 | A-7690S-C 16J | 16 | | | |
| 38-00-2227 | A-7690S-C 17J | 17 | | | |
| 38-00-2228 | A-7690S-C 18J | 18 | | | |
| 38-00-2229 | A-7690S-C 19J | 19 | | | |
| 38-00-2230 | A-7690S-C 20J | 20 | | | |
| 38-00-2231 | A-7690S-C 21J | 21 | | | |
| 38-00-2232 | A-7690S-C 22J | 22 | | | |
| 38-00-2233 | A-7690S-C 23J | 23 | | | |
| 38-00-2234 | A-7690S-C 24J | 24 | | | |
| 38-00-2235 | A-7690S-C 25J | 25 | | | |
| 38-00-2236 | A-7690S-C 26J | 26 | | | |
| 38-00-2237 | A-7690S-C 27J | 27 | | | |
| 38-00-2238 | A-7690S-C 28J | 28 | 40 I25-(JP902) | BROWN | |

HOT TIN DIP
(1-2.5UM).00004-.00010

| PART NO. | ENG. NO. | CCTS | TERM NO. | I.D. STRIPE | PLT.G. |
|------------|---------------|------|----------------|-------------|--------|
| 38-00-2392 | A-7690S-C 2H | 2 | 40 I25-H(P902) | GREEN | |
| 38-00-2393 | A-7690S-C 3H | 3 | | | |
| 38-00-2394 | A-7690S-C 4H | 4 | | | |
| 38-00-2395 | A-7690S-C 5H | 5 | | | |
| 38-00-2396 | A-7690S-C 6H | 6 | | | |
| 38-00-2397 | A-7690S-C 7H | 7 | | | |
| 38-00-2398 | A-7690S-C 8H | 8 | | | |
| 38-00-2399 | A-7690S-C 9H | 9 | | | |
| 38-00-2400 | A-7690S-C 10H | 10 | | | |
| 38-00-2401 | A-7690S-C 11H | 11 | | | |
| 38-00-2402 | A-7690S-C 12H | 12 | | | |
| 38-00-2403 | A-7690S-C 13H | 13 | | | |
| 38-00-2404 | A-7690S-C 14H | 14 | | | |
| 38-00-2405 | A-7690S-C 15H | 15 | | | |
| 38-00-2406 | A-7690S-C 16H | 16 | | | |
| 38-00-2407 | A-7690S-C 17H | 17 | | | |
| 38-00-2408 | A-7690S-C 18H | 18 | | | |
| 38-00-2409 | A-7690S-C 19H | 19 | | | |
| 38-00-2410 | A-7690S-C 20H | 20 | | | |
| 38-00-2411 | A-7690S-C 21H | 21 | | | |
| 38-00-2412 | A-7690S-C 22H | 22 | | | |
| 38-00-2413 | A-7690S-C 23H | 23 | | | |
| 38-00-2414 | A-7690S-C 24H | 24 | | | |
| 38-00-2415 | A-7690S-C 25H | 25 | | | |
| 38-00-2416 | A-7690S-C 26H | 26 | | | |
| 38-00-2417 | A-7690S-C 27H | 27 | | | |
| 38-00-2418 | A-7690S-C 28H | 28 | 40 I25-H(P902) | GREEN | |

HOT TIN DIP
(1-2.5UM).00004-.00010

REVISED
EC NO: E2006-0657
DRWN: MASZKI EMI CZ 2006/06/06
CHKD: MOR ARTY 2006/06/07
APPR: DENNEHY 2006/06/09

QUALITY SYMBOLS
▽=0
△=0

GENERAL TOLERANCES (UNLESS SPECIFIED)

| | MM | INCH |
|---------------|------|-------|
| 4 PLACES | ± 0. | ± --- |
| 3 PLACES | ± 0. | ± --- |
| 2 PLACES | ± 0. | ± --- |
| 1 PLACE | ± 0. | ± --- |
| ANGULAR ±1/2° | | |

DRAFT WHERE APPLICABLE
MUST REMAIN WITHIN DIMENSIONS

DIMENSION STYLE
MM ONLY

| DRAWN BY | DATE |
|-------------|------------|
| O. COSTEL | 1998/02/13 |
| CHECKED BY | DATE |
| MOHALLOR | 1998/09/16 |
| APPROVED BY | DATE |
| MWILHITE | 1998/09/16 |

MATERIAL NO. SEE CHART

SCALE ---
DESIGN UNITS METRIC
THIRD ANGLE PROJECTION

TITLE
INSULATION DISPLACEMENT CONNECTOR (2.54)/.100 CTR.

MOLEX INCORPORATED

DOCUMENT NO. SDA-7690S-*N*

SHEET NO. 2 OF 3

THIS DRAWING CONTAINS INFORMATION THAT IS PROPRIETARY TO MOLEX INCORPORATED AND SHOULD NOT BE USED WITHOUT WRITTEN PERMISSION

9 8 7 6 5 4 3 2 1