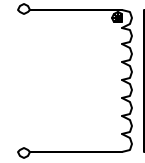


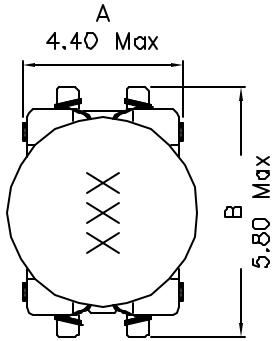
XFCMD4D13-XXX SERIES INDUCTORS

- TRUE SURFACE MOUNT DESIGN
- TAPE & REEL PACKAGING STANDARD, 5000 PCS PER 13" REEL
- CUSTOM DESIGNS AVAILABLE AT NO EXTRA CHARGE
- ECONOMICAL LOW COST SOLUTION FOR ALL OF YOUR POWER NEEDS
- Flamability Rating: UL94V-0

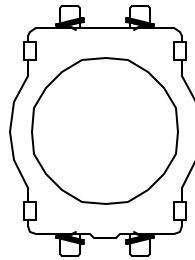
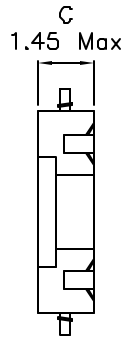
Schematic:



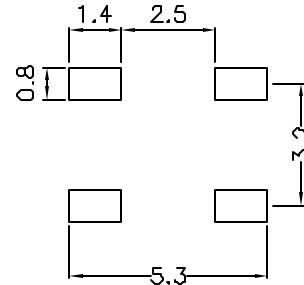
Mechanical Dimensions:



TOP VIEW



BOTTOM VIEW



(SUGGESTED MOUNTING PAD)

UNLESS OTHERWISE SPECIFIED

TOLERANCES:

.xx ±0.25

Dimensions in MM

PART NUMBER	INDUCTANCE ¹ ($\mu\text{H} \pm 20\%$)	DCR Max (Ohms) / Rated D.C Current (A)
XFCMD4D13-2R2	2.2	
XFCMD4D13-3R3	3.3	0.160 (0.123) / 0.85
XFCMD4D13-4R7	4.7	0.194 (0.149) / 0.80
XFCMD4D13-6R8	6.8	0.276 (0.212) / 0.65
XFCMD4D13-100	10	0.335 (0.258) / 0.57
XFCMD4D13-120	12	
XFCMD4D13-150	15	0.508 (0.391) / 0.45
XFCMD4D13-180	15	
XFCMD4D13-220	22	0.766 (0.589) / 0.37
XFCMD4D13-270	27	
XFCMD4D13-330	33	1.162 (0.894) / 0.28
XFCMD4D13-390	39	
XFCMD4D13-470	47	1.658 (1.326) / 0.22
XFCMD4D13-560	56	
XFCMD4D13-680	68	2.534 (2.027) / 0.18
XFCMD4D13-820	82	
XFCMD4D13-101	100	3.304 (2.643) / 0.17

For environmental data see "Product Specifications"

1. Tested @ 100KHz, 0.1 Vrms.
2. Inductance drop=10% typ. at rated Isat.
3. $\Delta T=40^\circ\text{C}$ rise typ. at Irms.
4. Operating temperature range -40°C to $+85^\circ\text{C}$.
5. Electrical Specifications at 25°C .