

## Han 6E-AV-F-RECHTS-SK

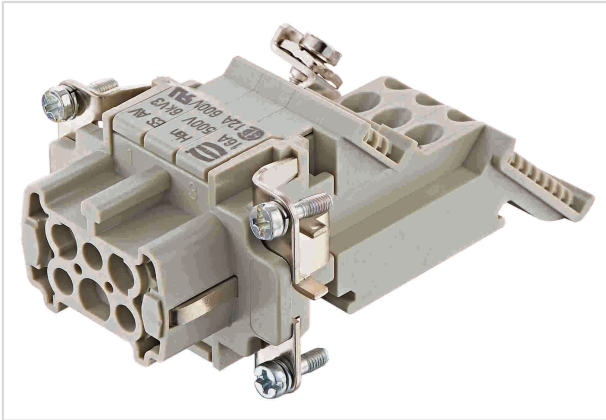


Image is for illustration purposes only. Please refer to product description.

Part number	09 33 006 4736
Specification	Han 6E-AV-F-RECHTS-SK
HARTING eCatalogue	<a href="https://b2b.harting.com/09330064736">https://b2b.harting.com/09330064736</a>

### Identification

Category	Inserts
Series	Han E <sup>®</sup> AV
Element	Terminal block connector
Specification	Right hand version Single contour (SK)

### Version

Termination method	Screw termination
Gender	Female
Size	6 B
Number of contacts	6
PE contact	Yes

### Technical characteristics

Conductor cross-section	0.2 ... 2.5 mm <sup>2</sup>
Rated current	16 A
Rated voltage	500 V
Rated impulse voltage	6 kV
Pollution degree	3
Rated voltage acc. to UL	600 V
Insulation resistance	>10 <sup>10</sup> Ω
Contact resistance	≤4 mΩ
Tightening torque	0.5 Nm



Pushing Performance

## Technical characteristics

Limiting temperature	-40 ... +125 °C
Mating cycles	≥500

## Material properties

Material (insert)	Polycarbonate (PC)
Colour (insert)	RAL 7032 (pebble grey)
Material (contacts)	Copper alloy
Surface (contacts)	Silver plated
Material flammability class acc. to UL 94	V-0
RoHS	compliant with exemption
RoHS exemptions	6(c): Copper alloy containing up to 4 % lead by weight
ELV status	compliant with exemption
China RoHS	50
REACH Annex XVII substances	No
REACH ANNEX XIV substances	No
REACH SVHC substances	Yes
REACH SVHC substances	Lead

## Specifications and approvals

Specifications	EN 60664-1 IEC 61984
Approvals	DNV GL
UL / CSA	UL 1977 ECBT2.E235076

## Commercial data

Packaging size	1
Net weight	81.58 g
Country of origin	Germany
European customs tariff number	85366990
eCl@ss	27440205 Contact insert for industrial connectors