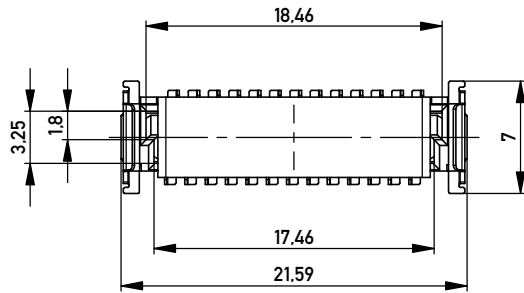
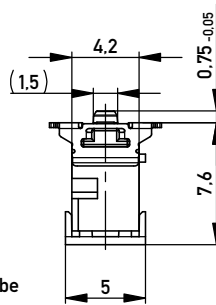
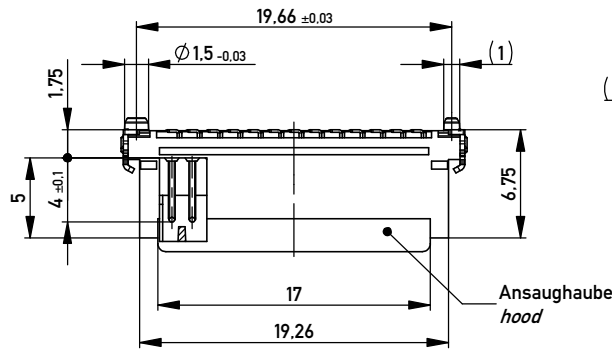
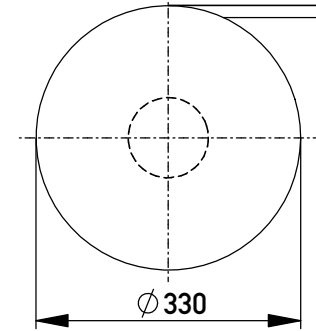
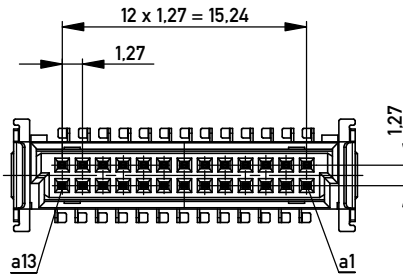


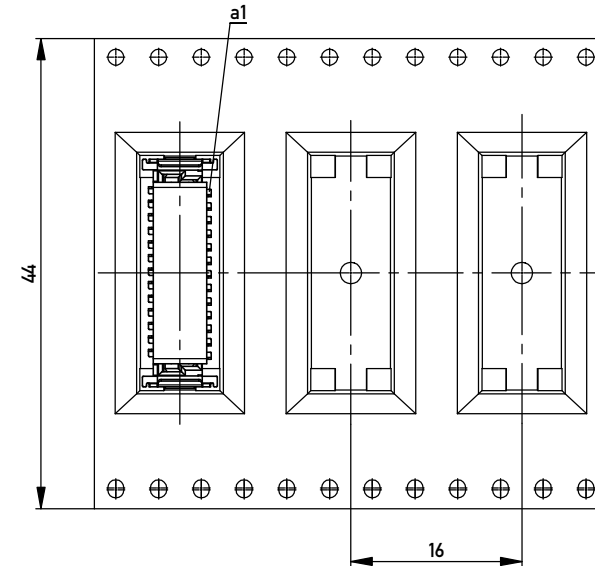
Verpackt in Gurtverpackung  
*Tape on Reel Packaging*  
 Verpackungseinheit: 280 Stück  
*Packaging unit: 280 pcs*



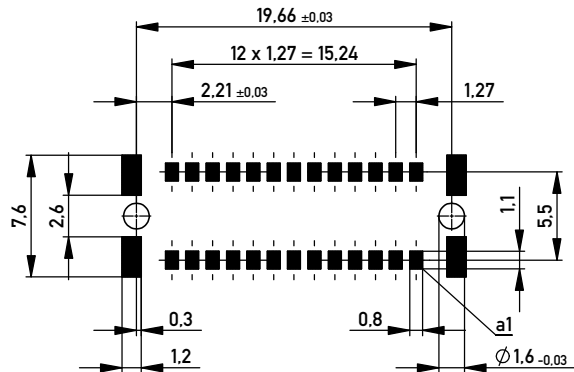
ohne Ansaughaube - *without hood*



Abspulrichtung - *Reel off Direction*



Leiterplatten-Layout Vorschlag für SMT  
*PCB-Layout Proposal for SMT*



Anforderungsstufe 1  
*Performance Level 1*

Kontaktbereich vergoldet  
*Mating Area gold plating*

Anschlussbereich verzinkt 4-6 µm  
*Terminal Area 4-6 µm tin plating*

Koplanarität der Anschlüsse ≤ 0.1 mm  
*Coplanarity Area of Termination ≤ 0.1 mm*

BA 7-13 - 8mm Bauhöhe  
*type 7-13 - Low Profile*

Information:	Tolerances	Scale 3:1		
All rights reserved. Only for Information. To ensure that this is the latest version of this drawing, please contact one of the ERNI companies before using.	Subject to modification without prior notice. Drawing will not be updated.	All Dimensions in mm	Designation	
			Messerl. SMC-Q 26-SMD-BA7-13 <i>Male SMC-Q 26-SMD-type7-13</i>	
ERNI	www.ERNI.com	100101090002		K
d	23.09.2013	Class		A3
Index	Date	SMCQ		

Copyright by ERNI GmbH  
 Proprietary notice pursuant to ISO 16763 to be observed.