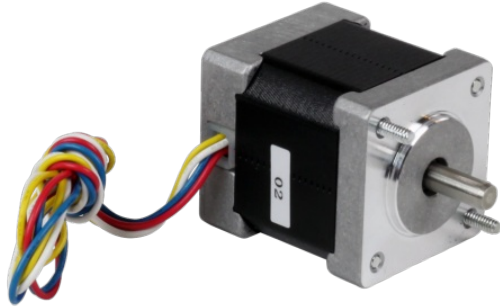


5014-042

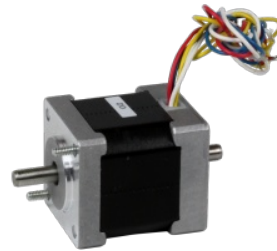
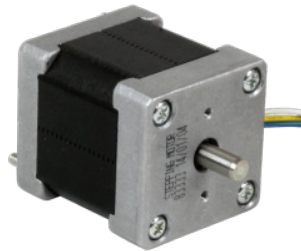
NEMA 14 Step Motor

1pc. - 48.00
50pc. - 36.00



Product Features

- 2-phase hybrid step motor
- Standard NEMA 14 dimensions
- Compact size



Description

Product Description:

The 5014-042 two-phase stepper motor is suitable for a wide range of motion control applications.

Specifications

Part Number:	5014-042
Frame Size:	NEMA 14
Motor Type:	Standard torque
Part Number w/Double Shaft:	5014-042D
Motor Length:	1.57 inches
Number of Lead Wires:	4
Lead Wire Configuration:	flying leads, no connector
Lead Wire/Cable Length:	14.5 inches inches
Lead Wire Gauge:	26 AWG
Bipolar Holding Torque:	25.53 oz-in
Step Angle:	1.8 deg
Bipolar Parallel Current:	1.0 A/phase
Bipolar Parallel Resistance:	4.3 Ohms/phase
Bipolar Parallel Inductance:	5.5 mH/phase
Rotor Inertia:	0.00028 oz-in-sec ²
Weight:	0.46 lbs
Storage Temperature:	-40 to +70 °C
Operating Temperature:	-20 to +50 °C
Insulation Class:	B
Shaft Run Out:	0.013 mm T.I.R. max
Radial Play:	.01 mm max with .45 KG load
End Play:	.01 mm max with 0.9 KG load
Perpendicularity:	.003 inches
Concentricity:	.002 inches

Downloads

Family Datasheet:	 StepMotorWiring-4-lead.pdf
Datasheet:	http://s3.amazonaws.com/applied-motion-pdf/5014-042.pdf
2D Drawing:	 5014-042_RevA.pdf
3D Drawing:	 5014-042D.igs
Speed-Torque Curves:	 ST Torque Curves_B3.pdf
	 STR2_5014-042.pdf

Pricing

	5014-042 Part No. w/ Single Shaft	5014-042D Part No. w/ Double Shaft
1pc.	\$48.00	\$48.00
25pc.	\$41.28	\$41.28
50pc.	\$36.00	\$36.00
100pc.	Request a Quote for 100+ piece pricing.	