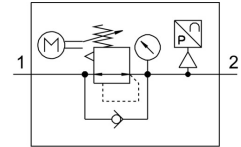


Electric pressure regulator MS6N-LRE-3/8-D6-PU-Z

Part number: 536546

FESTO



Data sheet

Feature	Value
Size	6
Series	MS
Mounting position	Any Preferably vertical
Structural design	Electrically adjustable pressure regulator
Short-circuit protection	For all electrical connections
Controller function	Outlet pressure constant With primary pressure compensation With secondary exhausting
Symbol	00991879
Pressure gauge	with pressure gauge
Operating pressure	0.08 MPa ... 2 MPa
Operating pressure	0.8 bar ... 20 bar
Pressure regulation range	0.3 bar ... 7 bar
Max. pressure hysteresis	0.25 bar
Standard nominal flow rate	5800 l/min
Analog output	0 - 10 V
Duration of control at 25°C	Max. 90 s
Design of inputs	as per IEC 61131-2 No galvanic isolation
Nominal operating voltage DC	24 V
Current consumption at nominal operating voltage	max. 1 A
Current consumption	max 3.5 A at 24 V DC
Control duration/interval ratio	1:3
Permissible voltage fluctuations	+/- 10 %
CE marking (see declaration of conformity)	As per EU EMC directive
Operating medium	Compressed air as per ISO 8573-1:2010 [7:4:4] Inert gas
Information on operating and pilot media	Operation with oil lubrication possible (required for further use)
Corrosion resistance class (CRC)	2 - Moderate corrosion stress
Storage temperature	-10 °C ... 50 °C
For use in the food industry	See supplementary material information
Temperature of medium	0 °C ... 50 °C
Degree of protection	IP65
Ambient temperature	0 °C ... 50 °C
Product weight	1280 g
Analog outputs, absolute precision at 25°C	± 3%

Feature	Value
Cable interface	Inputs: M12x1 plug, 5-pin Outputs: M8x1 plug, 3-pin
Type of mounting	Optionally: Line installation With accessories
Pneumatic connection 1	3/8 NPT
Pneumatic connection 2	3/8 NPT
Seals material	NBR
Housing material	Die-cast aluminum
Diaphragm material	NBR