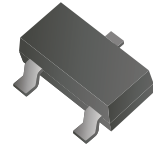


## CDST-21/A/C/S-G

Reverse Voltage: 250 Volts

Forward Current: 200 mA

RoHS Device



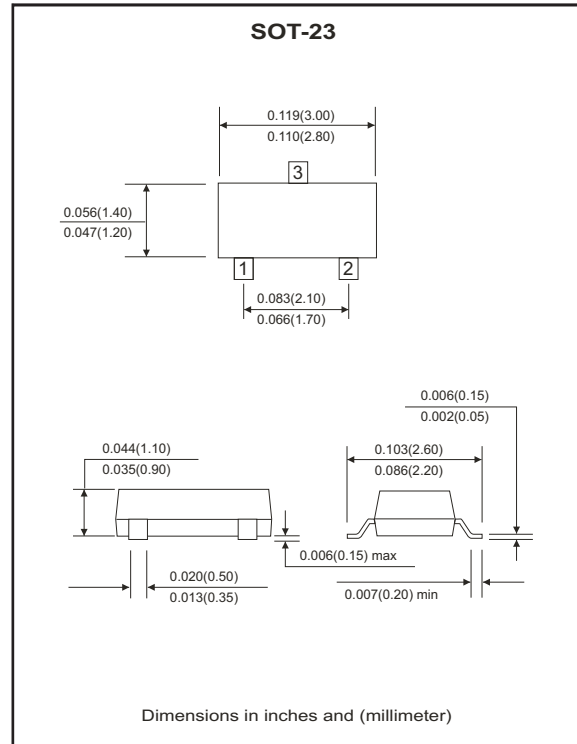
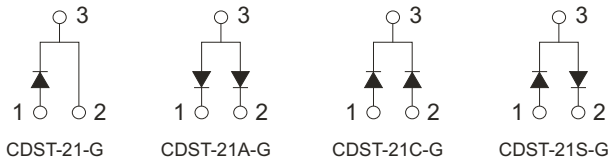
### Features

- Design for mounting on small surface.
- High speed switching.
- High mounting capability, strong surge withstand, high reliability.

### Mechanical data

- Case: SOT-23, molded plastic.
- Terminals: solderable per MIL-STD-750, method 2026.
- Approx. weight: 0.008 grams

### Circuit diagram



### Maximum Ratings and Electrical Characteristics

(at Ta=25°C unless otherwise noted)

Parameter	Symbol	Conditions	Value	Units
Repetitive peak reverse voltage	$V_{RRM}$		250	V
Reverse voltage	$V_R$		250	V
Average forward current	$I_F$		200	mA
Power dissipation	$P_D$		225	mW
Maximum forward voltage	$V_F$	@ $I_F=100mA$ @ $I_F=200mA$	1.0 1.25	V
Maximum reverse current	$I_R$	@ $V_R=200V$	1	$\mu A$
Maximum reverse recovery time	$T_{rr}$	$I_F=10mA, R_L=100\Omega$	50	nS
Maximum diode capacitance	$C_J$	$V_R=0V, f=1.0MHz$	5	pF
Maximum junction temperature	$T_J$		150	°C
Storage temperature	$T_{STG}$		-55 to +150	°C

## RATING AND CHARACTERISTIC CURVES (CDST-21/A/C/S-G)

Fig.1 - Forward Characteristics

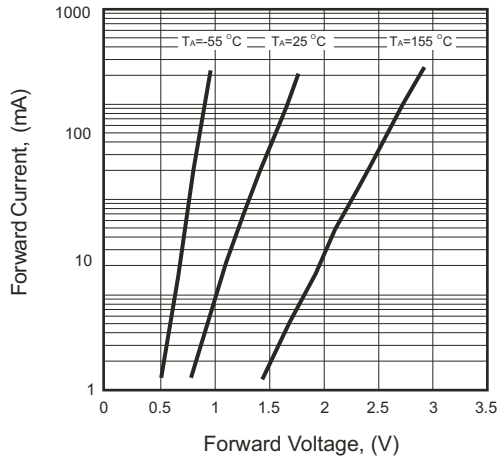


Fig.2 - Reverse Characteristics

