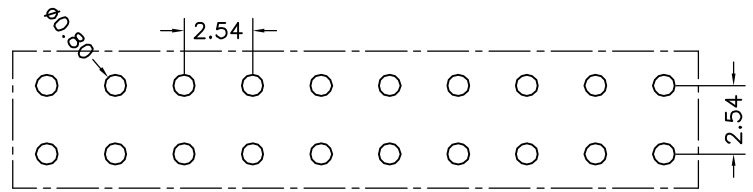
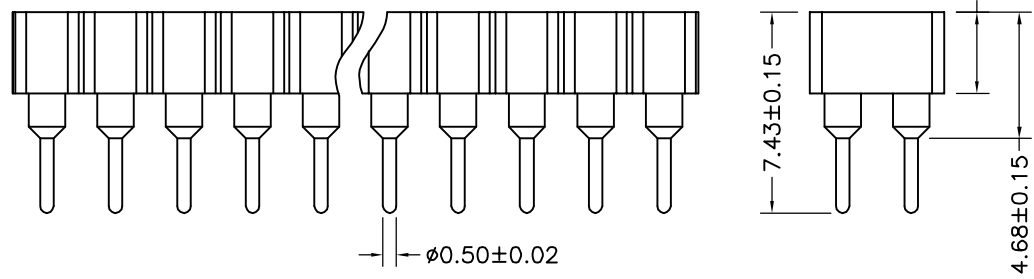
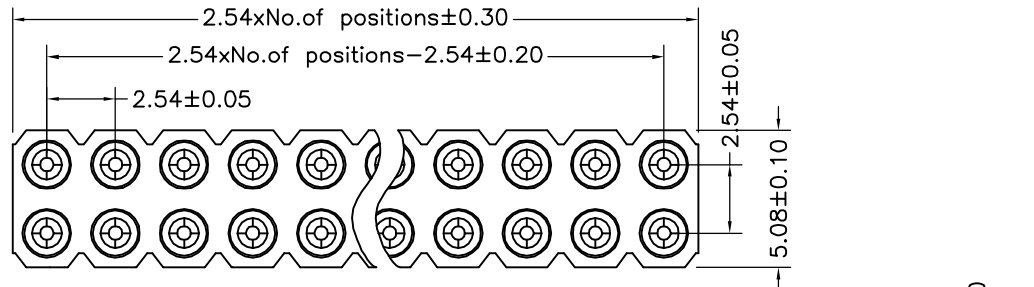


环保物料

TEL:0769-82001899



P. C. B LAYOUT

Technical Data

Material:
 Pin(outer sleeve): Brass, machined CuZn38Pb2
 Plating(outer sleeve):
 Tin Plated: 2µm/80µm Ni, 5µm/200µm Sn
 Gold Plated: 2µm/80µm Ni, 0.8µm gold
 Plating(Contact): 2µm/80µm Ni, gold or Tin plated
 Insulator: PPS UL94V-0
 Clip(Contact 4 Finger): Beryllium copper, heat treated

Electrical:

Current rating: 3Amps/contact max.
 Contact resistance: ≤4mΩ/contact
 Insulation resistance: ≥1000MΩ at V=100V
 Dielectric Withstanding Voltage: 1000V AV Min
 Operating voltage: 60VAC/DC

Mechanical:

Average Insertion force with steel pin of Ø0.66mm/0.38": <250g
 Average withdrawal force with steel pin of Ø0.66mm/0.38": <70g
 Mechanical life cycle: min 200
 Operating temperature: -40 °C to +105 °C
 Soldering temperature: +255 °C

				TOLERANCE UNLESS OTHERWISE		DRAWN	CK tan	XFCN 兴飞连接器有限公司 XFCN CONNECTORS CO.,LTD.	SHEET	1/1	
				X.	±0.30	X°	±5°		CHKD	DATE	2020.04.12
				.X	±0.20	.X°	±2°		APPD	UNITS	mm
				.XX	±0.08	.XX°	±1°		VIEW	SCALE	1:1
AO	MODIFICATION			DRAW	DATE	.XXX	±0.03	.XXX°	±0.5°	DWG NO.	009
1	2	3	4	5	6	7	8	9	10		

PRODUCT NAME: 2.54mm Machined Female Header
 PART. NO.: MF254V-12-xx-0743