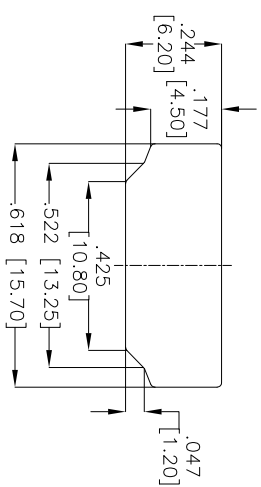
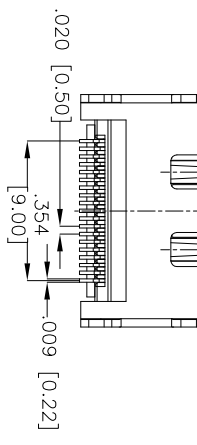
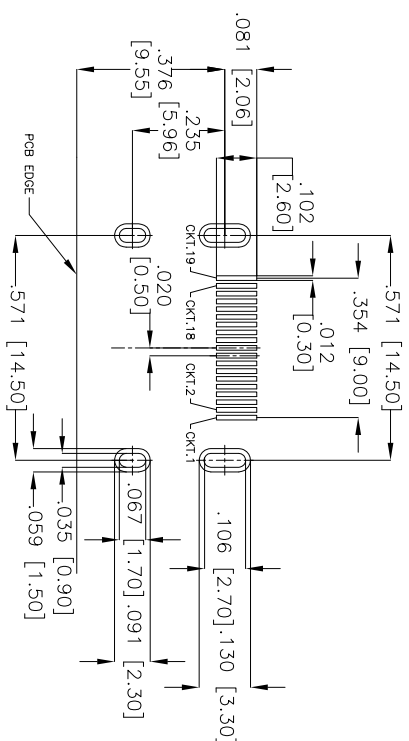
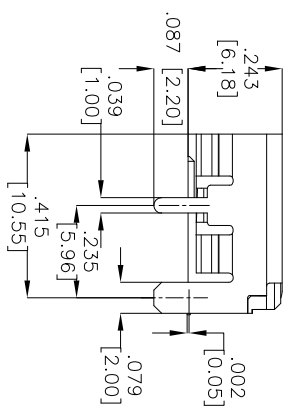
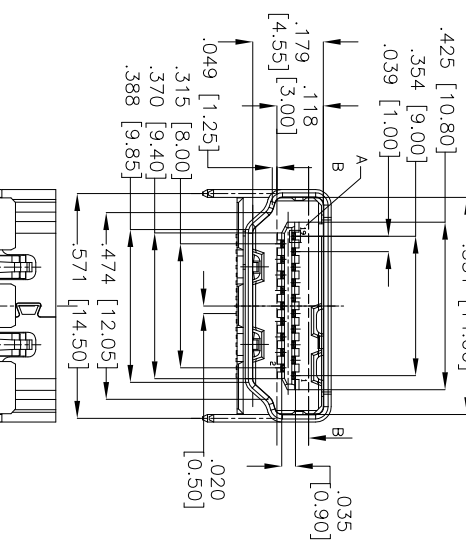
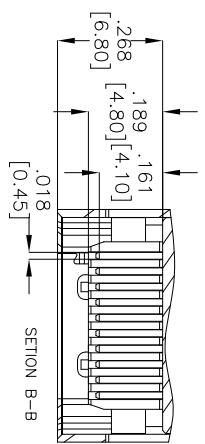
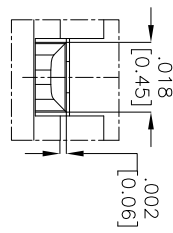
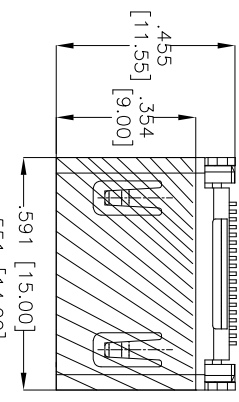


Rev	AWO #	Description	Date	Appr
-		RELEASED	11/4/10	

6 5 4 3 2 1

APPROVED: _____

DATE: _____ TITLE: _____



RECOMMENDED PCB LAYOUT

PACKAGED ON TAPE & REEL

SPECIFICATIONS:

Material: Housing: Hi-temp thermoplastic, UL 94V-0
Housing color: Black
Contact: Copper Alloy
Plating: Copper Alloy, Matt Tin plated

Electrical: Tin over Copper underplate on tails.
 Voltage rating: 40V
 Current rating: 0.5A
 Dielectric strength: 300VAC for 1 minute min.
 Contact resistance: 100 Megohm min.
 Insulation resistance: 10 mohms max.

Environmental: Lead free, RoHS Compliant
 Recommended soldering temp: 260°C for 5 seconds.

ADAM TECH

909 Rahway Avenue, Union, NJ 07083
 Phone: 908-687-5000 Fax: 908-687-5710

ADAM TECH
 HDML CONNECTOR, RIGHT ANGLE
 SMT TYPE, HEADER ASSEMBLY

UNLESS OTHERWISE SPECIFIED ALL DIMENSIONS ARE IN INCHES [MM]		TOLERANCES: EXCEPT AS NOTED		Holes		DATE	
.X	± .10	ØX	± .10	ØX	± .015		
.XX	± .020	ØXX	± .015	ØXXX	± .010		
.XXX	± .015	ØXXX	± .010				
DRAWN		AY	11/4/10	TITLE		SIZE	PART NO.
CHECKED		AH	11/4/10	HDML CONNECTOR, RIGHT ANGLE		X	HDML-S-RA-SMT-A-T/R
APPROVED				SMT TYPE, HEADER ASSEMBLY		REF:	S00015C
						SCALE:	NTS
						SHEET	1 OF 2

6 5 4 3 2 1