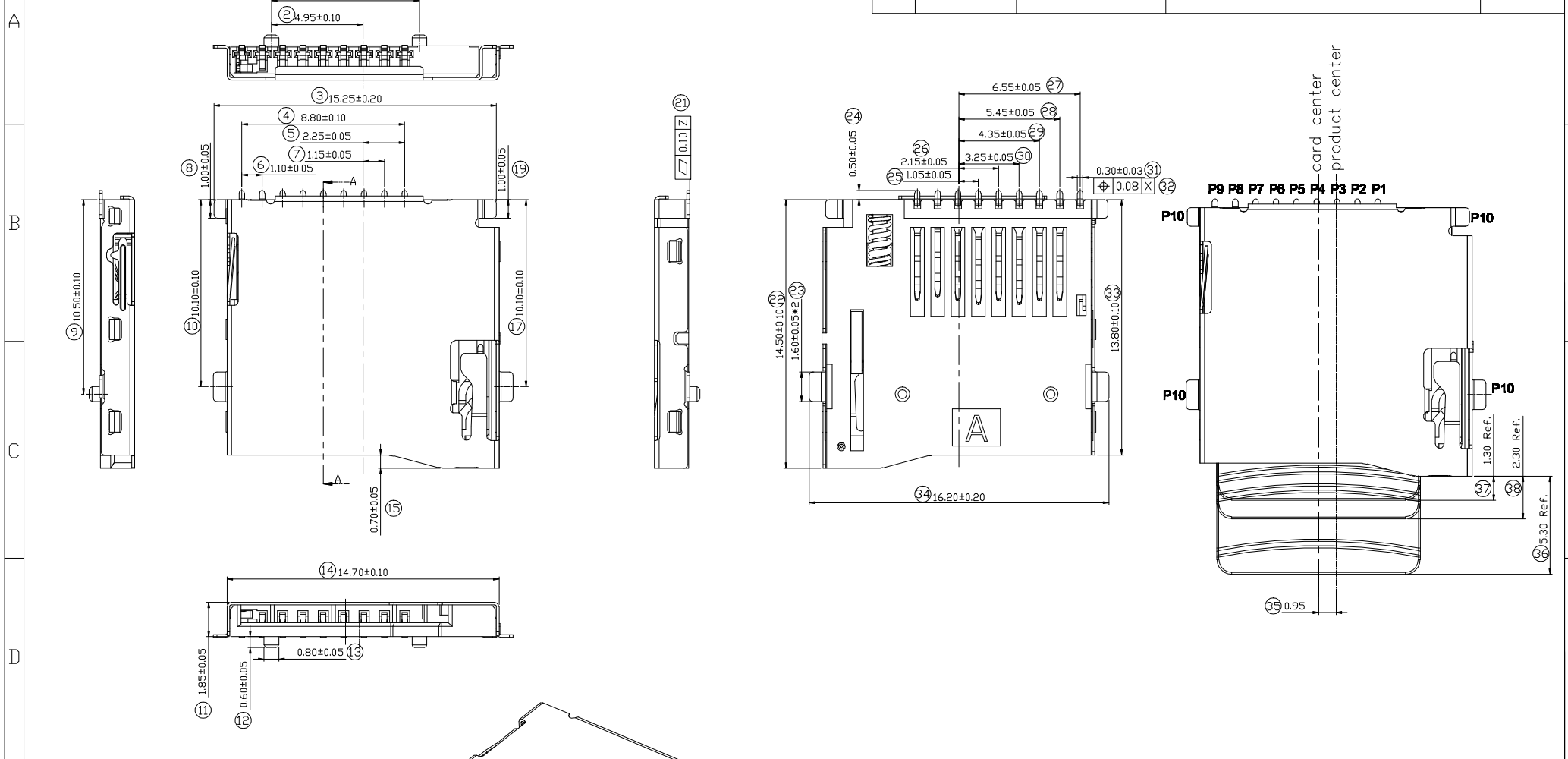


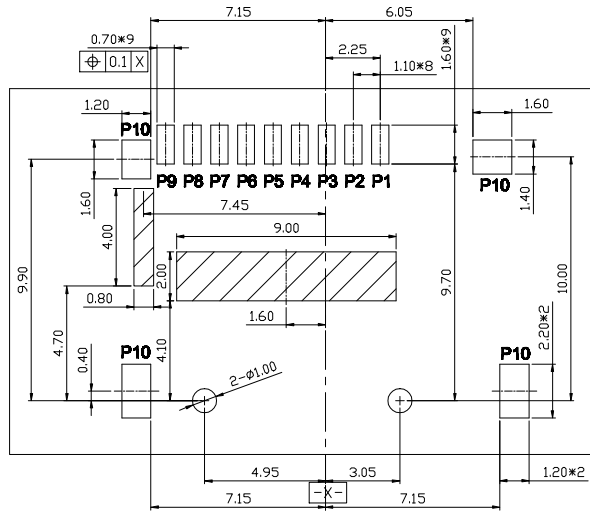
ACAD GENERATED DRAWING. DON'T CHANGE BY HAND

REV	DATE	ECN NO.	MODIFICATION	APPROVER
AO	2021/07/20		新增带锁规格	



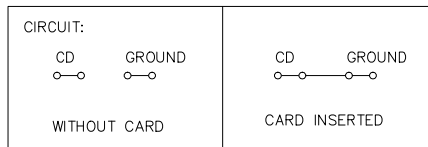
GENERAL TOLERANCE <table border="1"> <thead> <tr> <th>SELECT</th> <th>1</th> <th>2</th> <th>3</th> </tr> </thead> <tbody> <tr> <td>DN.</td> <td>✓</td> <td></td> <td></td> </tr> <tr> <td>X.XXX</td> <td>±0.10</td> <td>±0.05</td> <td>±0.15</td> </tr> <tr> <td>X.XX</td> <td>±0.15</td> <td>±0.13</td> <td>±0.25</td> </tr> <tr> <td>X.X</td> <td>±0.20</td> <td>±0.25</td> <td>±0.5</td> </tr> <tr> <td>X.</td> <td>±0.30</td> <td>±0.38</td> <td>±1.00</td> </tr> <tr> <td>ANGLE</td> <td>±2°</td> <td></td> <td></td> </tr> </tbody> </table>	SELECT	1	2	3	DN.	✓			X.XXX	±0.10	±0.05	±0.15	X.XX	±0.15	±0.13	±0.25	X.X	±0.20	±0.25	±0.5	X.	±0.30	±0.38	±1.00	ANGLE	±2°			UNITS mm	NAME: Micro sd push conn.	ATOM ® 深圳市爱特姆科技有限公司 SHENZHEN ATOM TECHNOLOGY CO., LTD.
	SELECT	1	2	3																											
	DN.	✓																													
	X.XXX	±0.10	±0.05	±0.15																											
	X.XX	±0.15	±0.13	±0.25																											
X.X	±0.20	±0.25	±0.5																												
X.	±0.30	±0.38	±1.00																												
ANGLE	±2°																														
		PART NO: MR01A-012XX	TITLE: Micro sd push conn.(外弹型) 带锁卡功能																												
		APPD:	DWG NO. ATOM-A06107																												
		DR: Abel	SCALE 1:1																												
			SHEET 1/2																												
			REV AO																												

ACAD GENERATED DRAWING. DON'T CHANGE BY HAND



RECOMMENDED PCB LAYOUT
(ALL TOLERANCE ARE ± 0.05)

: PROHIBITION AREA



Pin No.	MICRO SD
PIN1	DAT2 1P
PIN2	CD/DAT3 2P
PIN3	CMD 3P
PIN4	VDD 4P
PIN5	CLK 5P
PIN6	VSS 6P
PIN7	DAT0 7P
PIN8	DAT1 8P
PIN9	CARD DETECT
PIN10	GROUND

SPECIFICATION

1. Material:

housing: High Temperature thermoplastic, UL94V-0 :black.
orbit: High Temperature thermoplastic, UL94V-0: black.
Contacts: Phosphor Bronze,
Gold/Tin at Solder Tail,
Selected Gold on Contact Area Plating.
Shell: Stainless. Pickling

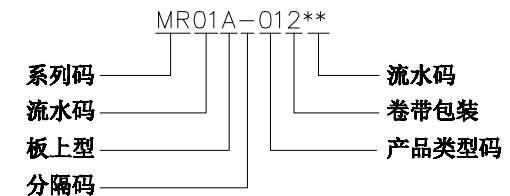
Lock card popup: Stainless. Pickling

2. Electrical Characteristics:

Operating voltage : 10V AC(rms)/DC.
Current rating : 0.5 A.
Operating Temperature: $-40^{\circ}\text{C} \sim +105^{\circ}\text{C}$.
Insulation resistance: 1000M ohms min. at 250VDC
Dielectric withstanding voltage: 500 VAC/1minute.
Contact resistance: 100m ohms max.

3. Mechanical characteristics

3.1 Mating durability: 10000 cycles.
3.2 Insertion force: 30N Max.
3.3 Extraction force: 1~30N
3.4 Mating cycle: 10000 cycles at the speed rate of
400-600 cycles/h; Without distortion of plastic and
serious wear and tear in terminal, No signal break.



GENERAL TOLERANCE			UNITS mm	NAME: Micro sd push conn.	ATOM 深圳市爱特姆科技有限公司 SHENZHEN ATOM TECHNOLOGY CO., LTD.		
SELECT	<input checked="" type="checkbox"/>		MAT'L	PART NO: MR01A-012XX	TITLE: Micro sd push conn.(外弹型) 带锁卡功能		
TOL	1	2			3	DWG NO. ATOM-A06107	SCALE 1:1
DN.				APPD:	CHKD:		
X.XXX	± 0.10	± 0.05	± 0.15			FINISH	Q'TY
X.XX	± 0.15	± 0.13	± 0.25				
X.X	± 0.20	± 0.25	± 0.5				
X.	± 0.30	± 0.38	± 1.00				
ANGLE	$\pm 2^{\circ}$						