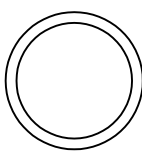
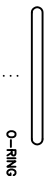
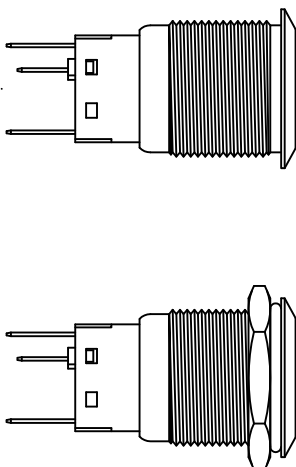


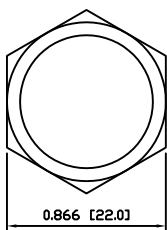
SCHEMATIC

SPECIFICATIONS

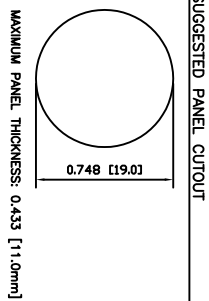
FUNCTION: 1P1T ON-ON  
 RATING: 2A 48VDC  
 ILLUMINATION VOLTAGE: 2.8V 20mA  
 CONTACT RESISTANCE: Min. at 1A, 12VDC  
 INSULATION RESISTANCE: 1,000MΩ Min. at 500VDC  
 DIELECTRIC STRENGTH: 2,000VAC Min. for 1 Minute  
 ELECTRICAL LIFE: 50,000 Cycles  
 MECHANICAL LIFE: 1,000,000 Cycles  
 TEMPERATURE: Operating: -20°C to 70°C  
 INGRESS PROTECTION: IP65  
 APPROVALS: ROHS COMPLIANT



EXPLODED VIEW

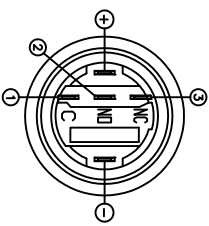


ASSEMBLED VIEW



SUGGESTED PANEL CUTOUT

MAXIMUM PANEL THICKNESS: 0.433 [11.0mm]



REV.	A	09/07/24	CAB
COLORS	A	09/07/24	CAB
MATERIALS	B	09/10/16	CAB
SPECIFICATIONS	A	09/07/27	CAB
REFERENCE	REV.	DATE	BY

THE INFORMATION CONTAINED IN THIS DOCUMENT IS PROPRIETARY TO E-SWITCH AND IS NOT TO BE COPIED OR TRANSMITTED

REV. A

INITIAL RELEASE DESCRIPTION

FOR DATE DRAWN BY

PROJECTION DRAWING NUMBER 52-PV4F23011341

DATE NOVEMBER 30, 2009

REVISION A



PV4F23011-341

INCHES [MILLIMETERS]

GENERAL TOLERANCES ±0.008 [-0.2] / ±1

SCALE DRAWING NOT TO SCALE

COLORS AND FINISH

BEZEL: Black, Anodized Finish  
 ACTUATOR: Black, Anodized Finish  
 ILLUMINATION: Blue (Forward), Blue (Reverse)  
 MARKING: None

CONTACTS

Silver/Cadmium Oxide (AgCdO)  
 Silver Plated Brass (H82)  
 Silver Plated Phosphor Bronze  
 O-RINGS: Silicone Rubber

INNER ASSEMBLY

Polyethylene Terephthalate (PET)  
 Phosphor Bronze  
 Spring Steel

HARDWARE

Nickel Plated Brass (H59)

SEALING

Silicone Rubber

ACTUATOR

Aluminum  
 Polycarbonate (PC)

BASE

Polycarbonate (PC)  
 Polybutylene Terephthalate (PBT)

MATERIALS

BUSHING: Aluminum

ACTUATOR

Aluminum  
 Polycarbonate (PC)

HARDWARE

Nickel Plated Brass (H59)

SEALING

Silicone Rubber

INNER ASSEMBLY

Polyethylene Terephthalate (PET)  
 Phosphor Bronze  
 Spring Steel

CONTACTS

Silver/Cadmium Oxide (AgCdO)  
 Silver Plated Brass (H82)  
 Silver Plated Phosphor Bronze  
 O-RINGS: Silicone Rubber

COLORS AND FINISH

BEZEL: Black, Anodized Finish  
 ACTUATOR: Black, Anodized Finish  
 ILLUMINATION: Blue (Forward), Blue (Reverse)  
 MARKING: None



PV4F23011-341

INCHES [MILLIMETERS]

GENERAL TOLERANCES ±0.008 [-0.2] / ±1

SCALE DRAWING NOT TO SCALE

DATE NOVEMBER 30, 2009

REVISION A