

# Customer Information Sheet

DRAWING No.: P25-XX26

SHEET 2 OF 2

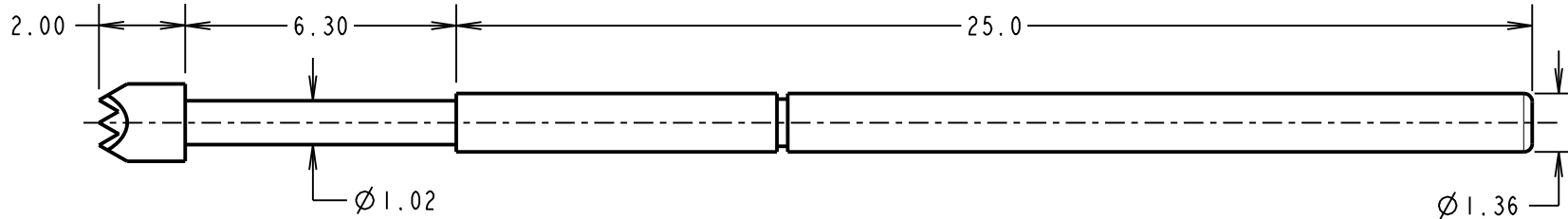
IF IN DOUBT - ASK

©

NOT TO SCALE

THIRD ANGLE PROJECTION

ALL DIMENSIONS IN mm



ORDER CODE:  
**P25-XX26**  
PROBE HEAD: \_\_\_\_\_  
VARIANT (SEE BELOW)

**NOTES:**

1. TO BE USED WITH SLEEVE S25-XX6.
2. SUITABLE FOR A MINIMUM DISTANCE BETWEEN CENTRES OF 2.54mm.

**SPECIFICATIONS:**

**MATERIAL:**

**PLUNGER:**

- P25-3226, P25-1726, P25-4026 = BERYLLIUM COPPER
- P25-0126 = HIGH CARBON STEEL

**BARREL:**

- P25-3226, P25-1726, P25-4026 = BRASS
- P25-0126 = PHOSPHOR BRONZE

**SPRING = STAINLESS STEEL**

**FINISH:**

PLUNGER, BARREL = GOLD OVER NICKEL

**SPRING:**

- P25-3226, P25-1726, P25-4026 = UNPLATED
- P25-0126 = GOLD OVER NICKEL

**ELECTRICAL:**

CURRENT RATING = 3A MAX

CONTACT RESISTANCE = 50mΩ MAX

**MECHANICAL:**

DURABILITY = 100,000 CYCLES MIN

FULL TRAVEL = 6.30mm

**SPRING FORCES:**

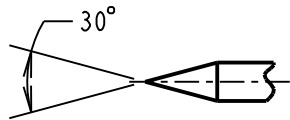
AT FULL TRAVEL = 2.45N ±0.50N (250g ±20%)

AT 2/3 TRAVEL = 1.67N ±0.34N (170g ±20%)

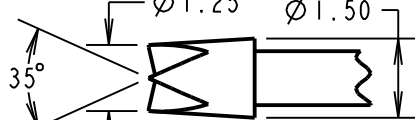
**ENVIRONMENTAL:**

TEMPERATURE RANGE = -40°C TO +180°C

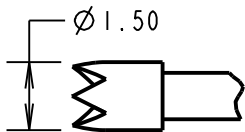
**PROBE HEAD VARIANTS**



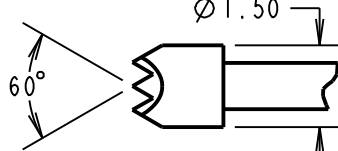
SPEAR HEAD  
P25-0126



CROWN HEAD  
P25-3226



TULIP HEAD  
P25-1726



SERRATED HEAD  
P25-4026

SB	6	08.11.17	20842
NAME	ISS.	DATE	C/NOTE
APPROVED: S.BENNETT			
CHECKED: M.PLESTED			
DRAWN: W.J.BOURNE			
CUSTOMER REF.:			
ASSEMBLY DRG:			

**HARWIN**

www.harwin.com  
technical@harwin.com

THIS DRAWING AND ANY INFORMATION OR DESCRIPTIVE MATTER SET OUT HEREON ARE CONFIDENTIAL AND COPYRIGHT PROPERTY OF THE HARWIN GROUP AND MUST NOT BE DISCLOSED, LOANED, COPIED OR USED FOR MANUFACTURING, TENDERING OR FOR ANY OTHER PURPOSE WITHOUT THEIR WRITTEN PERMISSION.

**TOLERANCES**

- X. = ±1mm
- X.X = ±0.50mm
- X.XX = ±0.10mm
- X.XXX = ±0.01mm
- ANGLES = ±5°
- UNLESS STATED

**MATERIAL:**

SEE ABOVE

FINISH: SEE ABOVE

S/AREA:

mm<sup>2</sup>

**TITLE:**

2.54mm MIN. CENTRE  
TWO-PIECE SPRING PROBE

DRAWING NUMBER:

**P25-XX26**

SHT  
2 OF 2