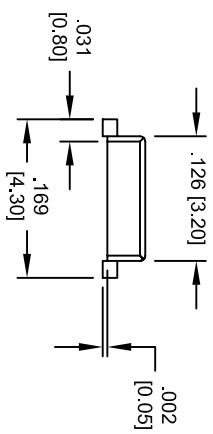
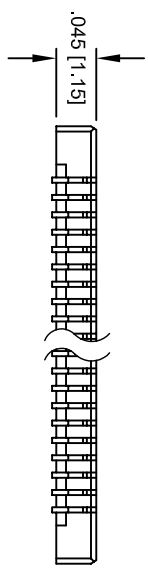
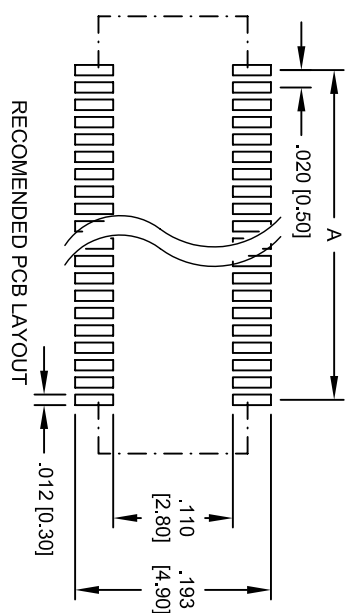
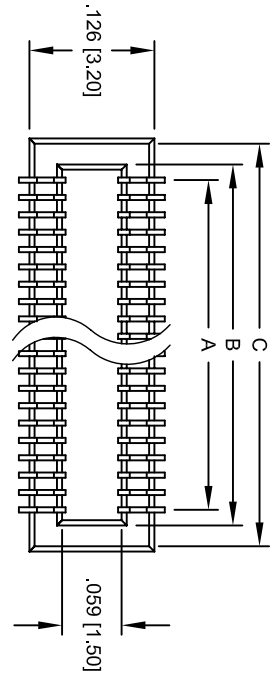


Rev	AWO #	Description	Date	Appr
-		RELEASED	10/21/04	

APPROVED: _____
 DATE: _____ TITLE: _____



A = .020 [0.50] X (No. of Contacts - 1)
 B = .020 [0.50] X (No. of Contacts - 1) + .041 [1.05]
 C = .020 [0.50] X (No. of Contacts - 1) + .079 [2.00]

Available Positions: 20, 28, 30, 40, 50, 60, 70, 80 & 90

SPECIFICATIONS:

Material: Insulator: LCP, glass reinforced, rated UL 94V-0
 Insulator color: Natural
 Contacts: Phosphor Bronze
 Plating: Gold Flash over Nickel underplate overall
 Electrical: Operating voltage: 50 VAC max
 Current rating: 0.3 Amps max
 Contact resistance: 40 mohms max
 Insulation resistance: 1000 Mohms min @ 500 VDC
 Dielectric withstanding voltage: 500 VAC for 1 minute
 Temperature Rating: Operating temperature: -65°C to +155°C

ADAM TECH

909 Rahway Avenue, Union, NJ 07083
 Phone: 908-687-5000 Fax: 908-687-5710

TITLE: 0.5mm BOARD TO BOARD CONNECTOR
 FEMALE, 20 THRU 90 POSITIONS, SMT

UNLESS OTHERWISE SPECIFIED ALL DIMENSIONS ARE INCHES [MM]	
TOLERANCES: EXCEPT AS NOTED	
INCHES	HOLDS
.X ± .10	± .10
.XX ± .020	± .015
.XXX ± .015	± .010
APPROVALS	DATE
DRAWN	SS
CHECKED	10/21/04
APPROVED	

SIZE	PART NO.	REV.
X	BB5-S-XX	-
REF:	SCALE: NTS	SHEET 1 OF 1