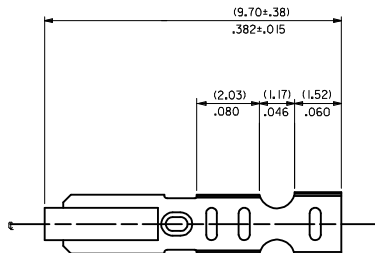
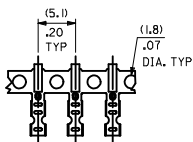
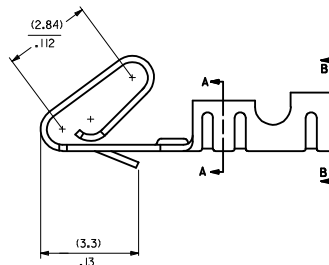
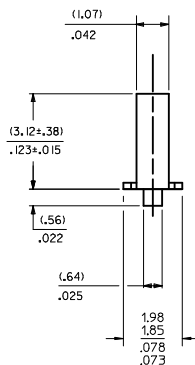
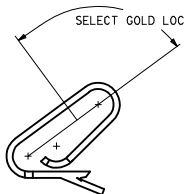


CARRIER VIEW

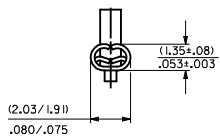


- NOTES:
- MATERIAL:
(0.20)/.008 THICK BRASS
 - FINISH:
122 - OVERALL TIN: (0.00381)/.000150 MIN. TIN OVER (0.00076)/.000030 MIN NICKEL
154 - OVERALL TIN: (0.00254)/.000100 MIN. TIN OVER (0.00127)/.000050 MIN NICKEL
P909 - OVERALL HOT TIN DIP: (0.00254)/.000100 MIN.
550 - SELECT GOLD: (0.000381)/.000015 MIN. OVERALL GOLD FLASH: (0.00005)/.000002 MIN. OVERALL NICKEL UNDERPLATE: (0.00076)/.000030 MIN.
555- SELECT GOLD (0.000381)/.000015 MIN. OVERALL NICKEL UNDERPLATE: (0.00076)/.000030
558 - SELECT GOLD: (0.00076)/.000030 MIN. OVERALL GOLD FLASH: (0.00005)/.000002 MIN. OVERALL NICKEL UNDERPLATE: (0.00127)/.000050 MIN.
 - PRODUCT SPEC: PS-10-07
 - PACKAGING SPECIFICATION: LOOSE TERMINALS: PER FK-2759-001 CHAIN FORM TERMINALS: PER FK-2759-002
 - CRIMP IS FOR 22-30 GA WIRE WITH (1.57)/.062 DIA INSULATION MAX.
 - INSERTION FORCE OF TERMINAL INTO (2.54)/.100 CENTERLINE CONNECTOR IS 2.5 LBS. MAX
 - TERMINAL RETENTION IN HOUSING IS 26.7N / 6LBS MIN. WHEN PULLED AT THE RATE OF (25.4MM) / 1 INCH PER MINUTE.
 - DIMENSIONS GIVEN ACROSS CENTERLINES ARE SYMMETRICAL ABOUT THOSE CENTERLINES WITHIN HALF THE TOTAL TOLERANCE.
 - THIS PART CONFORMS TO CLASS B REQUIREMENTS OF COSMETIC SPECIFICATION PS-45499-002.

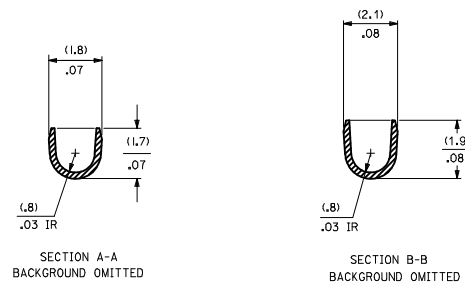
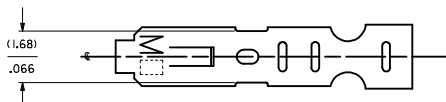
SELECT GOLD LOCATION



CRIMP DETAIL



CRIMPED TERMINAL 2759-(P909)C IS USED WITHOUT WIRE AND IS INSERTED INTO HOUSING TO PROVIDE TENSION WHEN ASSEMBLED TO HEADERS DURING SHIPMENT.



SECTION A-A
BACKGROUND OMITTED

SECTION B-B
BACKGROUND OMITTED

2759-(***)*

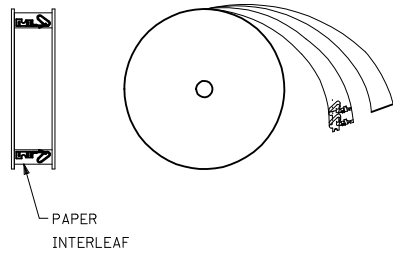
- FORM
- L=LOOSE
 - C=LOOSE CRIMPED
 - A=CHAIN, PER WINDING DETAIL "A"
 - B=CHAIN, PER WINDING DETAIL "B"
- PLATING
- SEE NOTE 2

ADD WINDING DETAIL EEC NO. UCF2014-4131 DRAWN BY: CHYKONGUEN CHECKED BY: CHYKONGUEN APPR:FSMTH DATE: 2014/04/07 DATE: 2014/04/08 DATE: 2014/04/21	QUALITY SYMBOLS ∇=0 ∇=0 ∇=0	GENERAL TOLERANCES (UNLESS SPECIFIED)		DIMENSION STYLE MM/IN	SCALE	DESIGN UNITS INCH	THIRD ANGLE PROJECTION		
		4 PLACES ±.010 3 PLACES ±.010 2 PLACES ±0.25 ±.014 1 PLACE ±0.36 ±.014 0 PLACE ±.010 ±.014	mm INCH	DRAWN BY: SAMIEC DATE: 07/28/87	CHECKED BY: PATEL DATE: 07/28/87	APPROVED BY: FSMITH DATE: 2012/03/20	MATERIAL NO. SEE CHART	DOCUMENT NO. SD-2759	SHEET NO. 1 OF 2
		ANGULAR ±1/2° DRAFT WHERE APPLICABLE MUST REMAIN WITHIN DIMENSIONS		THIS DRAWING CONTAINS INFORMATION THAT IS PROPRIETARY TO MOLEX INCORPORATED AND SHOULD NOT BE USED WITHOUT WRITTEN PERMISSION					

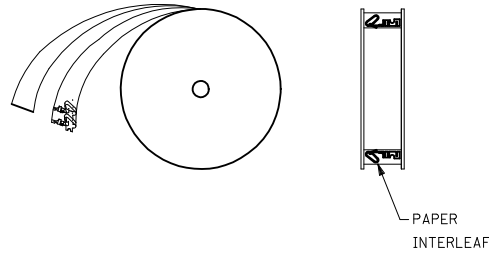
2759-(***)*

PART NO.	ENG. NO.
08-55-0101	2759-(555)B
08-55-0102	2759-(555)L
08-55-0126	2759-(555)A
08-56-0109	2759-(550)B
08-56-0110	2759-(550)L
08-50-0113	2759-(P909)B
08-50-0114	2759-(P909)L
08-50-0124	2759-(P909)C
08-51-0108	2759-(122)B
	2759-(122)L
08-50-0274	2759-(P909)B
08-50-0273	2759-(P909)A
08-55-0130	2759-(558)B
08-55-0131	2759-(558)L
08-50-0160	2759-(154)L
08-50-0159	2759-(154)B

WINDING DETAIL "A"



WINDING DETAIL "B"



SEE SHEET 1 SEC NO: UCP2014-431 DRAWN BY: DRYNAM/PPER 2014/04/07 CHECKED BY: GHYK/ANGUYEN 2014/04/08 APPROVED BY: APPR/FSMITH 2014/04/21 AWZ	QUALITY SYMBOLS	GENERAL TOLERANCES (UNLESS SPECIFIED)	DIMENSION STYLE	SCALE	DESIGN UNITS	THIRD ANGLE PROJECTION
	▽=0	mm INCH	MM/IN	1:1	INCH	☉
	▽=0	4 PLACES ±.005 ±.005	DRAWN BY: SAMIEC	DATE: 07/28/87	TITLE: CRIMP TERMINAL	
	▽=0	3 PLACES ±.010 ±.010	CHECKED BY: PATEL	DATE: 07/28/87	22-30 GA WIRE	
	▽=0	2 PLACES ±0.25 ±.014	APPROVED BY: FSMITH	DATE: 2012/03/20	molex	
	1 PLACE ±0.36 ±.014	DRAFT WHERE APPLICABLE MUST REMAIN WITHIN DIMENSIONS	SEE CHART		DOCUMENT NO. SD-2759	SHEET NO. 2 OF 2
	0 PLACE ±.010 ±.010		THIS DRAWING CONTAINS INFORMATION THAT IS PROPRIETARY TO MOLEX INCORPORATED AND SHOULD NOT BE USED WITHOUT WRITTEN PERMISSION			