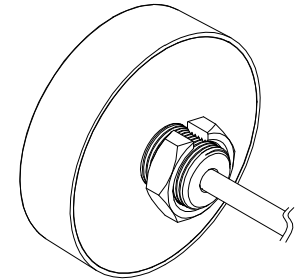
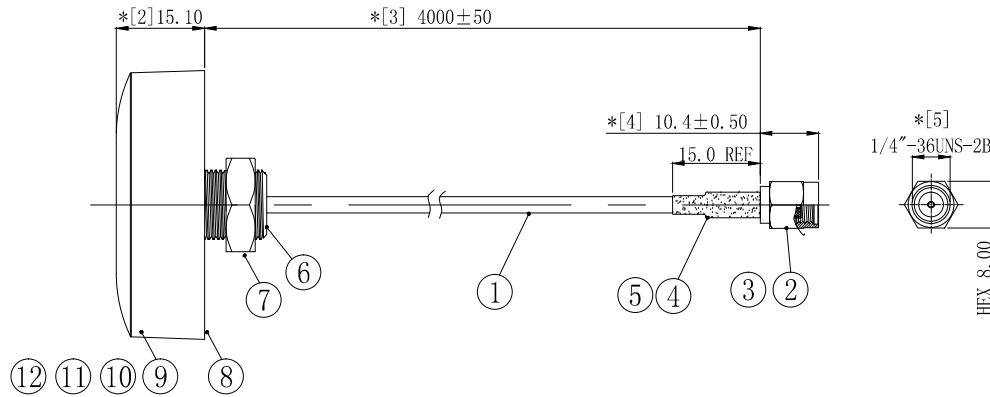
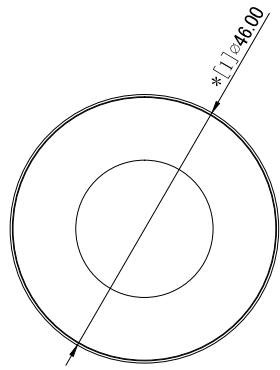


1	2	3	4	5	6	7	8
REVISION		DESCRIPTION		DATE	DRAFTER		
A0		首次发行		20.12.17	S. He		



3D 视图

13	2MH030	L10*W15mm*T9.0, EVA+双面背胶	3	---
12	2YG085	铜管, OD4.0 L10.0内孔3.2mm	1	---
11	2YP085	wifi 下层PCB, 带3M L300背胶, FR-4	1	---
10	2YP084	wifi 上层PCB, FR-4, OD41.2*T0.6mm	1	---
9	2SBKG3801-1	小平头蘑菇型胶体, 黑色抗紫外线OD:46.0*H:15.1mm	1	---
8	2SBKG3801-2	塑胶盖, 黑色抗紫外线OD:46.0mm	1	---
7	2LC00S-313	M12螺母, H:16.0*T:5.0mm	1	---
6	2LC00S-314	M12螺柱, OD:15*L:13.0mm	1	---
5	2TA035BK1-015	OD:3.5*L15.0mm, 无卤阻燃, 125H2普通型, 黑色	1	---
4	2LC15S-601	铜管, 镀镍OD:3.9*L9.0	1	---
3	2LC15PF047-5	SMA母针OD:1.5*L5.9mm 镀金	1	---
2	2LC15PM623-2	SMA公头 H8.0*L16.5镀金	1	---
1	2C5R17414BK1	RG174 coaxial-cable, BLACK	1	---
No.	PART NUMBER	PART NAME & DESCRIPTION	Q' TY	REMARKS

Technical requirements:

- 1 electrical characteristics: impedance: 50 Ω;  
Applicable frequency range: 2.4GHz ~ 2.5GHz VSWR < 2.0;
2. Dimension inspection: [\*] is the FAI test item; \* As a key test item; ■ Controlled items for CPK.
3. Packaging specification: IPCS/ Bag
4. Environmental requirements: products and materials used must meet RoHS requirements.

COMPLIANCE WITH THE REQUIREMENT: ■ RoHS; □ HF; □ SONY SS-00259; □ OTHERS  
\*NO USING ESTRICTED AND BANNED SUBSTANCE

GENERAL TOLERANCE:

LINEAR:	
X	±2.00
X.X	±1.00
X.XX	±0.50
X.XXX	±0.30
ANGLE:	
X°	±4.00°
X.X°	±3.00°
X.XX°	±2.00°
X.XXX°	±1.00°

HJ-Tech 东莞市皇捷通讯科技有限公司

FILE NAME:  
product drawing  
ENG/DATE:  
Mark/20.07.08

TITLE:  
wifi小平头蘑菇天线, RG174 线L4.0M

CHE/DATE:

P/N:  
HJ-Wifi-G174-SMA-L=4M

APP/DATE:

UNIT:  
mm  
SCALE:  
1:1  
REVISION:  
A0  
SHEET:  
1/1