



**Rely on ECE's Relays,
and You Always Relax!**

HOME APPLICATION RELAY ETR RE SERIES

FEATURES

- 4-poles versions available with switching current at 5 A.
- Printed Circuit Board Terminal, Plug-in Terminal and Flanged Case designed for easy mounting.
- Low coil power consumption with high response time.
- High reliability and long life with better vibration and shock resistance.
- Touch Button and LED version available.
- Comply with RoHS and REACH regulations.

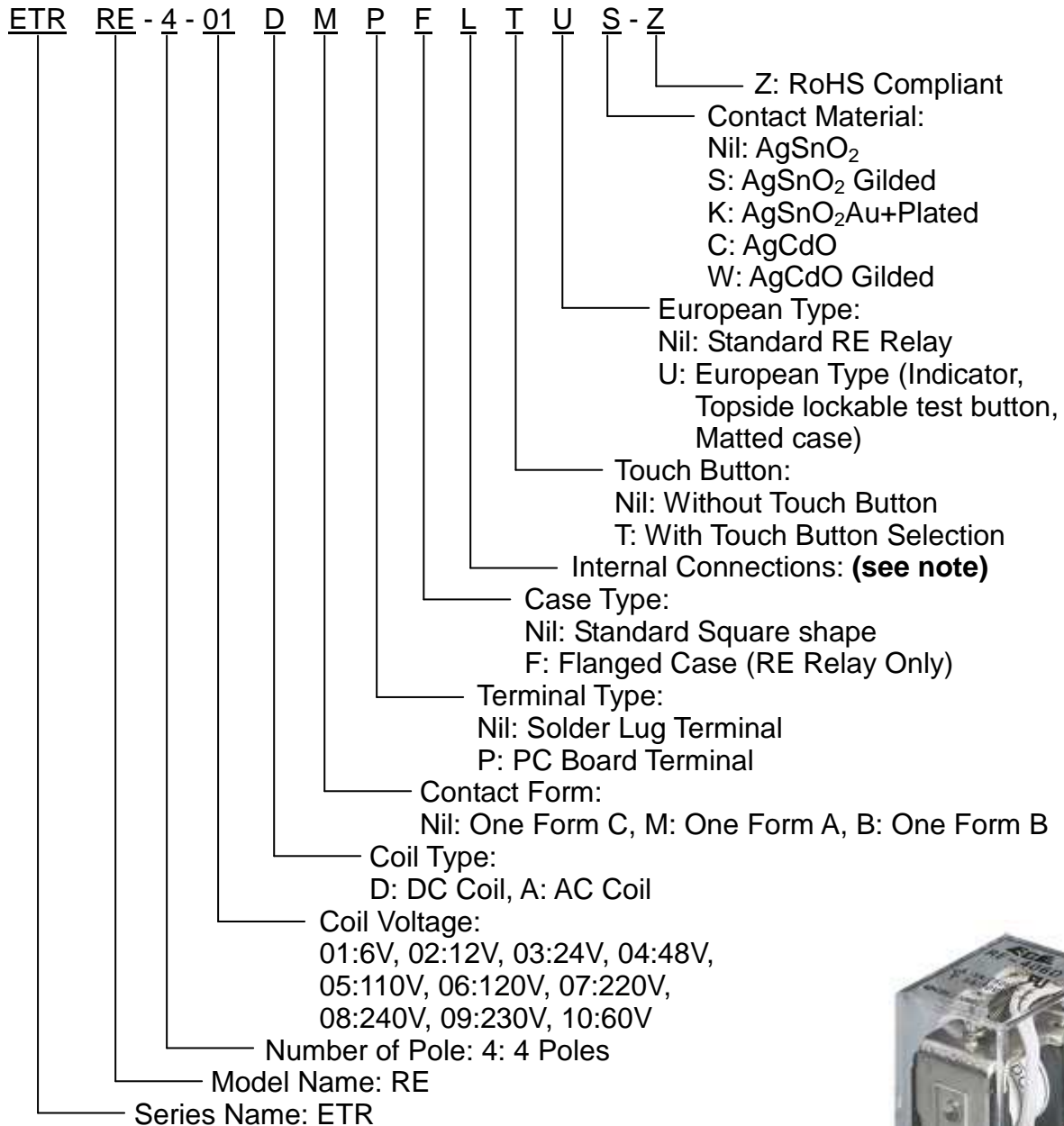
SPECIFICATIONS

Contact Resistance	Max. 100mΩ at initial value. @1A,6VDC
Contact Capacity	5 Amps at 250VAC Cosφ=1 5 Amps at 30VDC L/R=0
Operate Time	25m Sec. Max.
Release Time	25m Sec. Max.
Dielectric Strength	Between coil & Contact: 1500VAC at 50/60Hz for one minute Between Contacts: 1000VAC at 50/60Hz for one minute
Insulation Resistance	100MΩ Min. at 500VDC

COIL SPECIFICATION AT 20°C

Coil Sensitivity	Coil Voltage Code	Nominal Voltage (VAC/VDC)	Nominal Current (mA)		Coil Resistance (Ω±10%)	Power Consumption		Pull-In Voltage (VDC)	Drop-Out Voltage (VDC)	Max. Allowable Voltage (VDC)
			50Hz	60Hz		50Hz	60Hz			
RE 4P AC Coil	01	6	282.67	214.33	10	1.70VA	1.29VA	80% Max.	15% Min.	110%
	02	12	106.2	94.85	40	1.27VA	1.14VA			
	03	24	52.8	45.45	160	1.27VA	1.09VA			
	04	48	23.65	19.95	600	1.10VA	0.96VA			
	05	110	12.45	10.25	3,400	1.37VA	1.13VA			
	06	120	16.75	14.33	3,400	2.01VA	1.72VA			
	07	220	6.18	5.08	13,600	1.36VA	1.12VA			
	08	240	7.24	5.85	13,600	1.74VA	1.41VA			
	09	230	7.0	5.7	13,600	1.61VA	1.31VA			
RE 4P DC Coil	01	6	150		40	Abt. 0.9W		80% Max.	10% Max.	110%
	02	12	75		160					
	03	24	36.9		650					
	04	48	18.5		2,600					
	05	110	10		11,000					
	06	120	10.9		11,000					
	10	60	15		4,000					
	07	220	5		44,000	Abt. 1.1W				

■ PART NUMBER SYSTEM



***Marking without: "ETR" & "Z".**

note:

Internal Connections:

Nil: Without LED

L: With LED Selection (Use no polarity LED)

Z: Coil parallel with diode & the Positive pole "+" On # 14 terminal

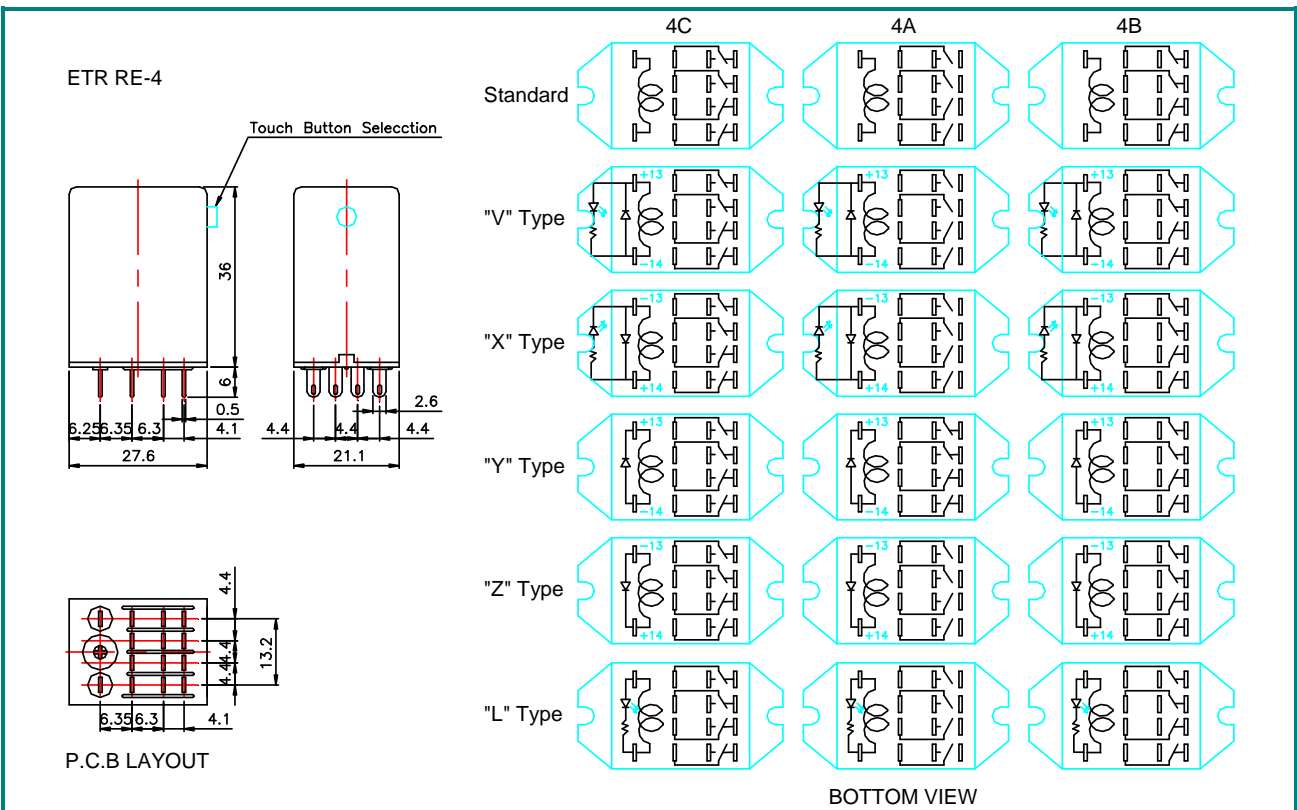
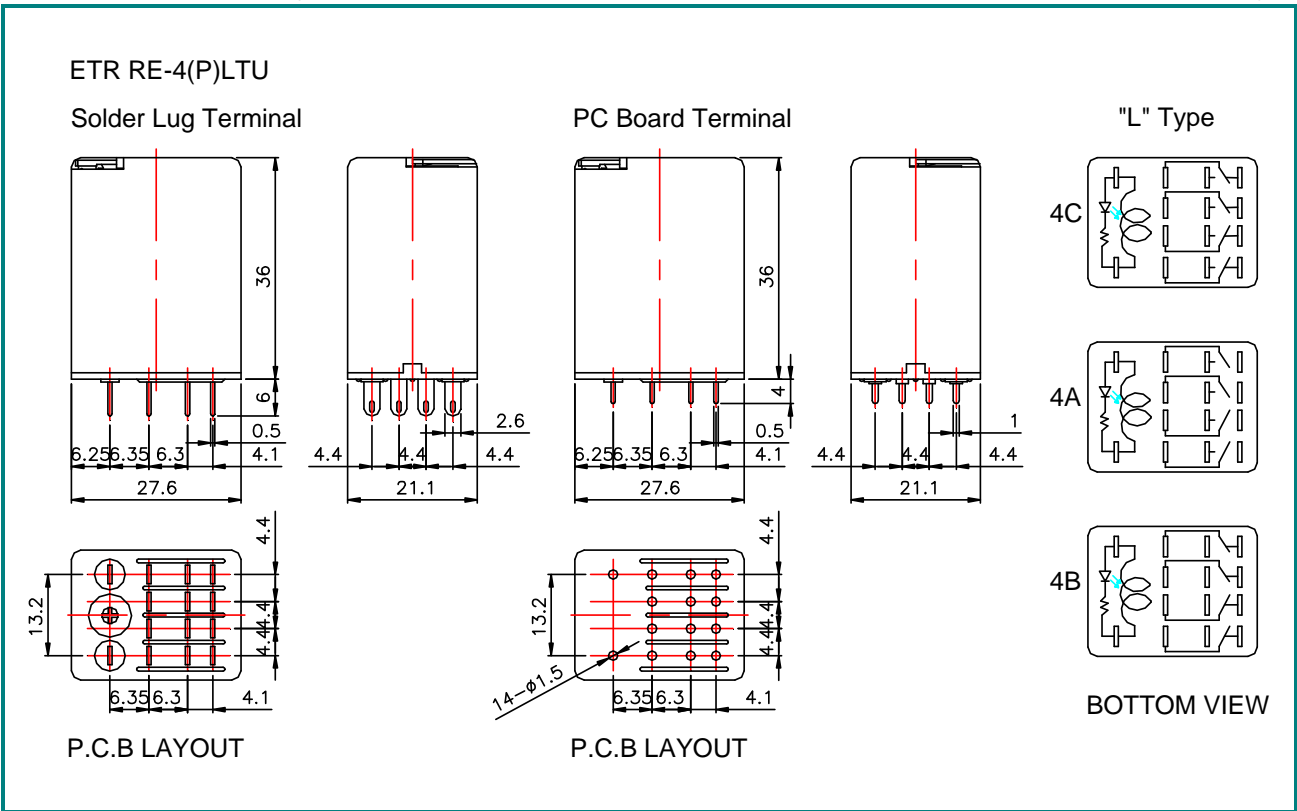
Y: Coil parallel with diode & the Negative pole "-" On # 14 terminal

X: Coil parallel with diode + LED & the Positive pole "+" On # 14 terminal

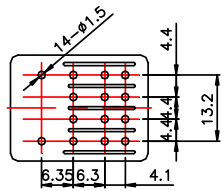
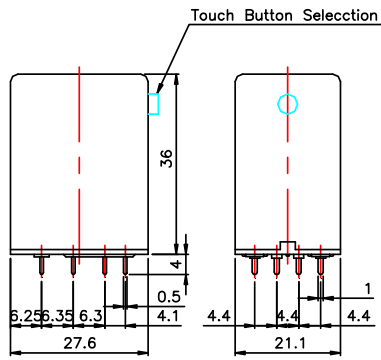
V: Coil parallel with diode + LED & the Negative pole "-" On # 14 terminal

(Z, Y, X, V, Only VDC Coil)

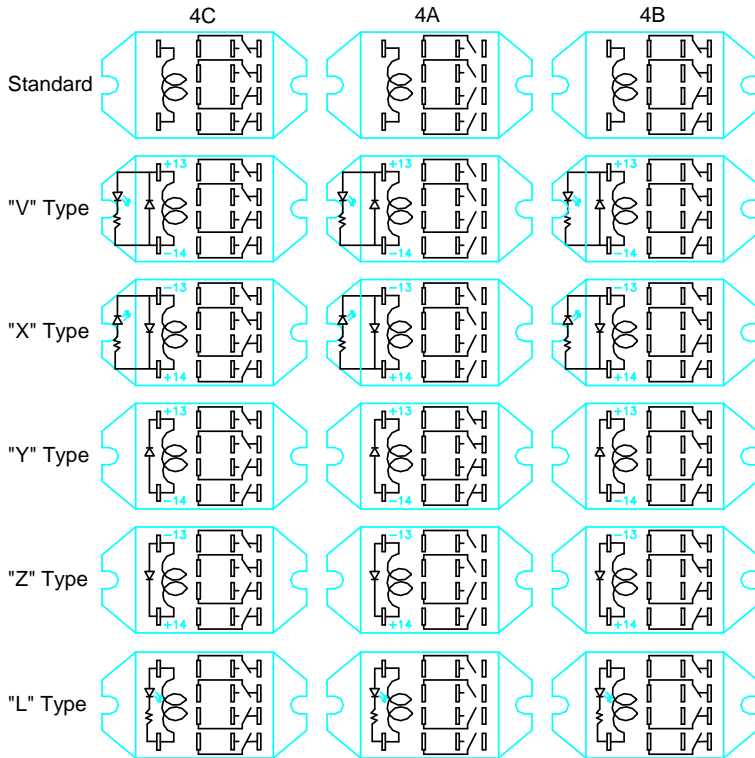
DIMENSIONS ($\leq 5\text{mm} \pm 0.2\text{mm}$, $> 5\text{mm} \pm 0.3\text{mm}$, the tolerance of PCB thru hole: $+0.1\text{mm}$)



ETR RE-4-P

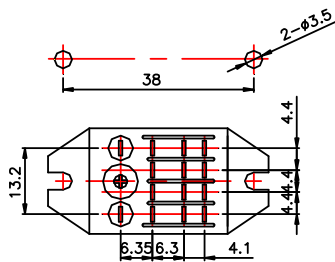
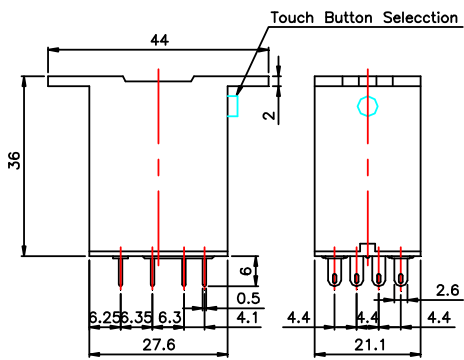


P.C.B LAYOUT

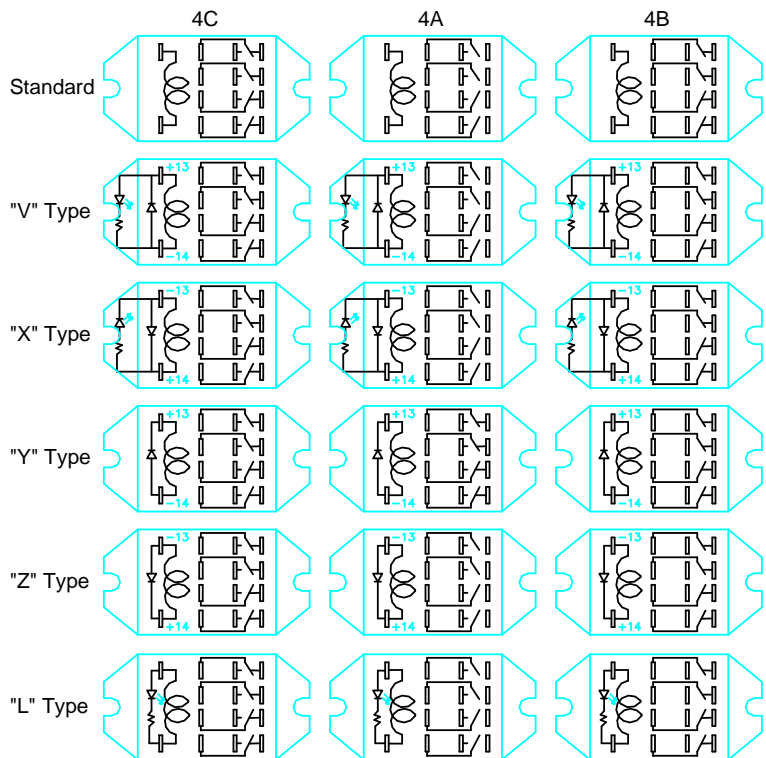


BOTTOM VIEW

ETR RE-4-F



P.C.B LAYOUT



BOTTOM VIEW