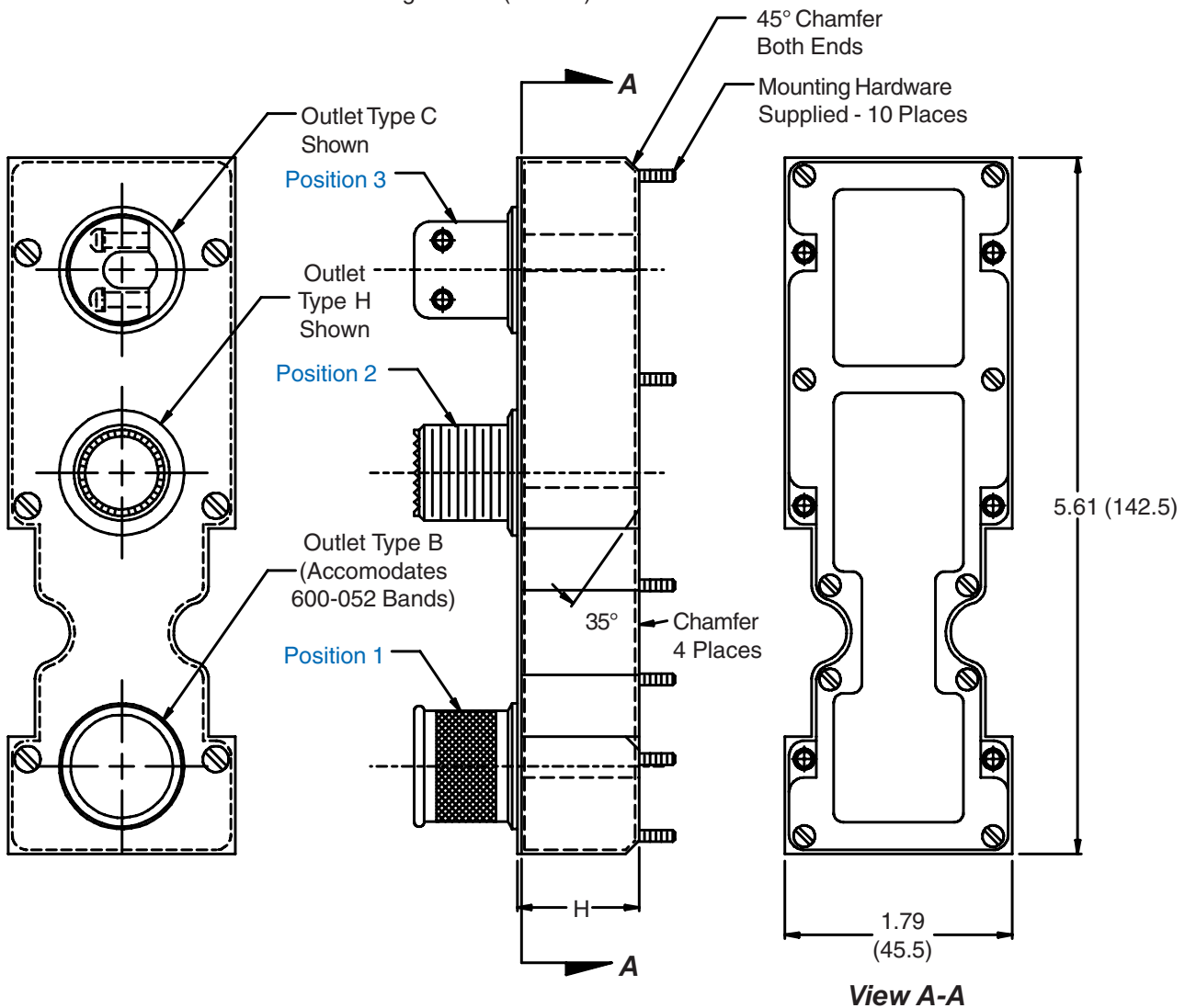


**527-047**  
**Multi-Function Backshell**  
for Size 2 ARINC 600 Series Connector

**527-047 NF P 01 03 05 A**

Basic Part No. \_\_\_\_\_  
 Finish (Table III) \_\_\_\_\_  
 Connector Designator (Table IV) \_\_\_\_\_  
 Dash No. (Table I) Position 1 \_\_\_\_\_  
 Dash No. (Table I) Position 2 \_\_\_\_\_  
 Dash No. (Table I) Position 3 \_\_\_\_\_  
 Height Code (Table II) \_\_\_\_\_



Metric dimensions (mm) are indicated in parentheses.

**527-047**  
**Multi-Function Backshell**  
for Size 2 ARINC 600 Series Connector



**TABLE I: CABLE ENTRY**

Dash No.	Outlet Type	Cable Entry Max
01	B	.500 (12.7)
02	B	1.000 (25.4)
03*	H	.346 (8.8)
04**	H	.840 (21.3)
05	C	.312 (7.9)
06	C	.594 (15.1)
07	Omit	N/A

\* Dash No. 03 mates with MIL-C-38999 Series III and IV Size 09 Accessories  
\*\* Dash No. 04 mates with MIL-C-38999 Series III and IV Size 17 Accessories

- Metric dimensions (mm) are indicated in parentheses.
- Material/Finish:  
Backshell and Fittings = Al Alloy/See Table II  
Hardware = SST/Passivate
- Height code C not available with P2 or P6 connectors.

**TABLE II**

Height Code	H
A	1.00 (25.4)
B	1.25 (31.8)
C	.44 (11.2)
D	.84 (21.3)

**TABLE III: FINISH OPTIONS**

Symbol	Finish	Symbol	Finish
B	Cadmium Plate/Olive Drab	NC	Zinc Cobalt/Dark Olive Drab
C*	Black Anodize	NF	Cadmium Plate/Olive Drab over Electroless Nickel
G*	Anodic Hard Coat	T	Cadmium Plate/Bright over Electroless Nickel
J	Gold Iridite over Cadmium Plate over Electroless Nickel	U**	Cadmium Plate/Black
LF	Cadmium Plate/Bright over Electroless Nickel	ZN	Zinc-Nickel Alloy/Olive Drab
M	Electroless Nickel		
N	Cadmium Plate/Olive Drab over Electroless Nickel		

\*Anodize finish is not suitable for EMI shielding or grounding applications.  
\*\*Applicable to corrosion resisting steel backshells and accessories. Consult factory for other available finishes.

**TABLE IV: CONNECTOR DESIGNATOR**

ARINC 600 series connector backshells are designed to replace the insert retainer plates. Due to non-standard modifications by the connector manufacturer, the backshell may require special design alterations to mate properly. The following should be used to determine if a backshell modification is required. Prior to ordering, consult factory with connector part numbers not shown to ensure a proper fit.

Connector Designator	Connector Description
P	All Manufacturer's Plug and Receptacle Shells, Except for Those Listed Below (Prior to ordering, consult factory with connector part numbers not listed below to ensure a proper fit.)
P1	Cannon BKAD****322 Series Plug
P2	Cannon/Radiall Environmental Plug
P3	Cannon/Boeing BACC 66 Plug
P5	Radial/Boeing BACC66 Plug
P6	Cannon BKAC & BKAE XXX322 Series Environmental Plug