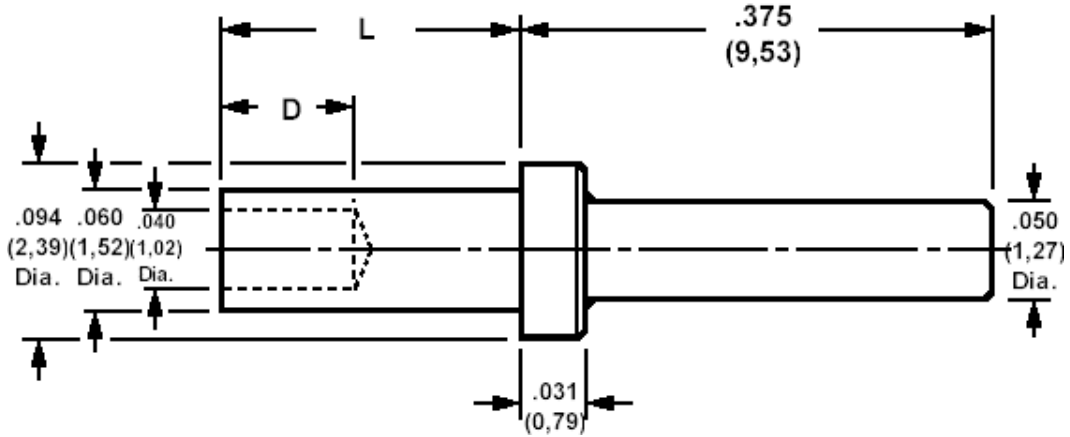


## 120-1134 Solder terminal, Pin type

Recommended mounting hole .064 (1,61), #52 drill



### How to order code

**120-1134-XX-YY-00**

Basic Part No XX= L dimension, YY = Plating Finish

DIMENSIONS (XX)				
Basic Part No	(XX)	L	Board Thickness	D
120-1134	-01	.063 (1,60)	.031 (0,79)	.063 (1,60)
	-02	.094 (2,39)	.062 (1,59)	.071 (1,80)
	-03	.125 (3,18)	.094 (2,39)	.071 (1,80)
	-04	.156 (3,96)	.125 (3,18)	.071 (1,80)
	-05	.219 (5,56)	.188 (4,76)	.071 (1,80)
	-06	.281 (7,14)	.250 (6,35)	.071 (1,80)

MATERIALS			
Component	Material	Finish (YY)	
		-03	-04
Terminal	Brass	Gold	Electro-tin

SWAGE TOOLING	
Recommended Swaging Tools:-	
Anvil	435-6479-01-00-00
Roll Punch	435-6673-01-00-00
Flare Punch	435-6692-01-00-00